



PROGRAMME COVER DESIGNED BY  
LOTTE NEAR 81



Plastic Furniture Company

Plastic professionals since 1978.



A-Frame Picnic Table and Bench Set

# URBAN FURNITURE & BINS

Shipped Worldwide

Member of Made in Britain

Maintenance Free

Manufactured in the UK

Weather resistant

Full personalisation service available

(design and print)

Recycled range available



Provincial Litter Bin - 39 Litre

SCAN



[plasticfurniturecompany.co.uk](http://plasticfurniturecompany.co.uk)



# WELCOME TO DURHAM WOMEN FC

## DURHAM WOMEN FC

DURHAM UNIVERSITY SPORTS PARK, MAIDEN CASTLE, STOCKTON ROAD,  
DURHAM, DH1 3SE

## BOARD OF DIRECTORS

LEE SANDERS, DAWN HEPPLER, PATRICK CONNOLLY, FRANCES CONNOLLY,  
FRED GRAINGER, PETER WARBURTON OBE

## FIRST TEAM OFFICIALS & STAFF

### HEAD OF FOOTBALL

LEE SANDERS

### HEAD OF FINANCE

DAWN HEPPLER

### CHIEF OPERATING OFFICER

MARK DONNELLY

### HEAD OF SAFEGUARDING

MARC MCPHILLIPS

### INTERIM FIRST TEAM HEAD COACH

NEIL REDFEARN

### FIRST TEAM ASSISTANT COACH

GEORGE ANTHONY

### PGA U21 HEAD COACH

MARTIN HERDMAN

### GOALKEEPING COACH

JON COLLINSON

### ANALYST

JACK CAMARDA

### PERFORMANCE LEAD

SIMON FAIRBAIRN

### STRENGTH & CONDITIONING COACHES

RHIANNA TELFER

CONNOR POWER

### LEAD PHYSIOTHERAPIST

NAT GUTTERIDGE

### SPORTS THERAPIST

ELEANOR CONNOR

### CLUB DOCTOR

DOUGAL SOUTHWARD

### NUTRITIONIST

VICTORIA DUKE

### MEDIA & MARKETING OFFICER

JANE THWAITES

### CONTENT CREATORS

LAURA SMITH

THOMAS WHITTON

### CLUB PHOTOGRAPHERS

CRAIG MCNAIR

WILL CHESHIRE

### CONTACT EMAIL

INFO@DURHAMWFC.CO.UK

## WHAT'S INSIDE?



### 4 CAPTAIN'S NOTES



### 10 BACK TO MY ROOTS

### 13 THE BIG INTERVIEW



### 27 THE VISITORS

7 SPECIAL OFFER FOR DURHAM FANS!

9 LATEST NEWS ROUND-UP

18 MEET THE SQUAD

21 DURHAM WOMEN FC SUPPORTERS CLUB

33 JOHN MIDDLETON COLUMN

45 CLUB PATHWAY ROUND-UP



**SARAH**  
**WILSON**

BARCLAYS  
**WSL2**

**hummel**

**VISION  
EDUCATION**



## GOOD AFTERNOON AND WELCOME TO TODAY'S BARCLAYS WOMEN'S SUPER LEAGUE 2 GAME AGAINST SHEFFIELD UNITED

---

I'm so proud of the way we fought to get back into our last game against Bristol City in really difficult conditions.

We dominated the first half with the wind and we were really frustrated to concede. When you go behind, you can either crumble or fight, and we found that second wind and pushed on. To be honest it was probably a fair result, but at times, the game was there to win

I know Beth and I know that she would have been feeling the pressure before her penalty, but she stepped up and took one of the most important penalties so far this season. Anyone who can step up to that has some courage. I couldn't look at first, but Beth had it in the bag - a Hepple special!

These last two games are so vital. We don't want to be relying on other teams, and that's the reality of our position and of the game. We can only control what we do, and the point against Bristol was huge. We have lots to build on going into these last two games.

It's going to be an incredibly tough game today. We've had some battles against Sheffield United already this season, and we're both in the dog fight. We know they have some great players; they're a difficult side to break down and are really strong on the counter. We need to be at our best.

We have had some time during the international break to work on what we need to work on to make sure we are ready to fight going into the last two games.

Today is Sarah Robson's last home game for the team, and where do I even begin? It's honestly hard to put into

words what it's meant to share the pitch with you for so long. You're without a doubt one of the best players I've ever played alongside, but more than that, you've been an unbelievable teammate and such a special friend.

I've looked up to you for years – not just for everything you've achieved in the game, which is incredible, but for the person you are every single day. The way you carry yourself, the standards you set, and everything you give back to the game.

It won't be the same without you at Durham. You leave behind so much more than just memories – you leave a legacy. A true OG of the mighty Duzza, and someone who has had such a big impact on all of us, whether you realise it or not.

I know this isn't the end for you – you'll keep doing what you do best and making your mark on the game – but it's definitely the end of a really special chapter for us.

Thank you for everything, Mac. I'll miss you more than you know

Finally, I just want to say a thank you for the support at both our home and away this season. It's not been easy, especially when the results have been against us, but you have all still showed up week in week out.

Games like our last against Bristol, you need the support of the fans to get us over the line, and that is what helped us get that vital point on the board.

**Sarah Wilson**

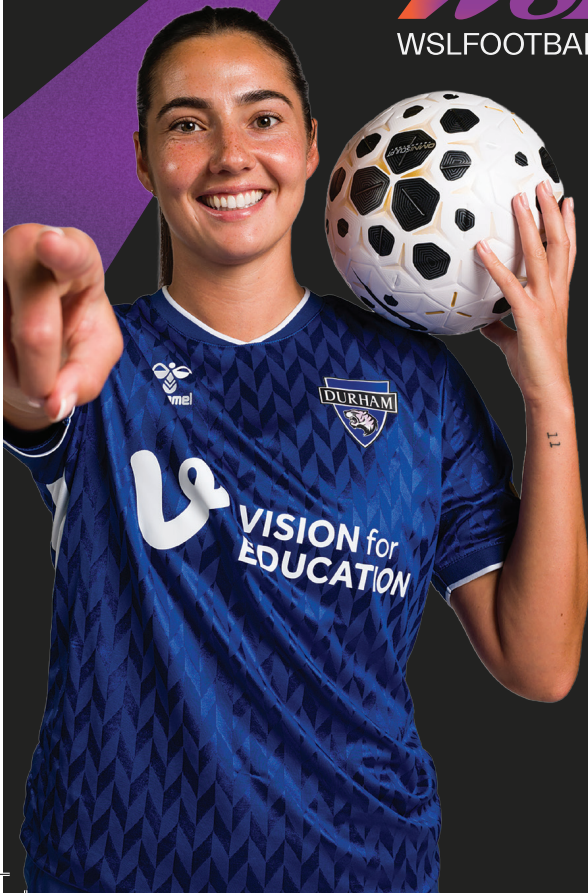
# WATCH THIS

Live every week on YouTube.

 BARCLAYS

*WSL2*

WSLFOOTBALL.COM





pace  
health club



# Exclusive Membership Offer!

Use Promo Code:  
DURHAMWFC




**UNDER £2 A DAY!**



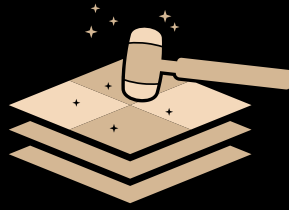
Heated Swimming Pool  
Jacuzzi  
Steam Room  
Sauna  
Fully Equipped Gym

**CONTACT US**

 0191 372 7222

 [pace.durham@radissonblu.com](mailto:pace.durham@radissonblu.com)





**ELITE PAVING & LANDSCAPING**

0 7 7 1 4 8 5 6 6 7 5



pace  
health club

**CALLING ALL  
DURHAM STUDENTS!**

*Student Memberships Available*

GYM  
SAUNA  
STEAM ROOM  
HEATED SWIMMING  
POOL  
JACUZZI  
TREATMENT ROOMS

**JOIN TODAY!**





# WADDINGTON STREET CENTRE

Registered Charity No. 701514

**A local Mental Health Charity in the centre of Durham**

**We aim to deliver effective support through life skills by offering social, physical and educational opportunities in a safe and welcoming environment.**

**Find out more about referrals, volunteer opportunities and making a donation by calling 0191 386 0702 or visiting [www.waddingtoncentre.co.uk](http://www.waddingtoncentre.co.uk)**

**Available to residents in County Durham aged 18 + years**



**Please scan to donate**





### **MY FIRST TEAM...**

A boys team called Maiden City Academy.

It was just when I was around 4 or 5.

I just loved playing football and wanted to join a team.

### **MY FIRST FOOTBALL HERO...**

Roy Keane, I always liked his way of playing!

### **MY EARLIEST FOOTBALL MEMORY...**

Just playing football at my grannie's house with all my uncles and cousins.

### **MY ADVICE TO THE NEXT GENERATION...**

Just work hard and enjoy it!

# BACK TO MY ROOTS

WITH TYLER TOLAND





The PFC Trust was set up in 2019 by a small group of like minded individuals who wanted to make a difference. Since then we have awarded over 1.2m in grants / donations to local causes. It is our mission to create positive change in our community.

We work with a range of partners to ensure that individuals and organisations are best placed to reach their goals.

This support is different for everyone we work with, but it can include capacity building support, funding and training opportunities.

**WE BELIEVE WE HAVE  
CHANGED LIVES AND  
THE LIFE CHANCES  
OF MANY  
AND NOW YOU CAN HELP  
US, CHANGE LIVES TOO.**



**Volunteer**



**Donate**



**Become a  
Patron**



For more information about The PFC Trust, Becoming Involved or How we may be able to help you. **Get in Touch!**

[www.thepfctrust.org](http://www.thepfctrust.org)  
[pfc.trust@outlook.com](mailto:pfc.trust@outlook.com)

[/thePFctrust](https://www.facebook.com/thePFctrust)  
[@/thepfctrust](https://www.instagram.com/thepfctrust)



# THE BIG INTERVIEW GRACE AYRE

WE CATCH-UP WITH GRACE AFTER HER 100TH APPEARANCE....



**We caught up with Grace Ayre after making her 100th appearance for Durham Women.**

A product of the club's youth system, Ayre joined the club at Under 14s, working her way through the pathway, and becoming a key part of our first team side.

And in a sit-down interview with Jane Thwaites, she reflected on her time at the club, and what it meant to make her 100th first team appearance.

**You made your 100th first team appearance for the club against Bristol Citu, what does that milestone mean to you?**

"It was a really special moment for me.

"Putting on the shirt 100 times is something I'm incredibly proud of, especially knowing the work and

commitment that's gone into it over the years.

"I've been here nearly 10 years now, so yeah, it's definitely a special milestone!"

**You joined Durham at U14, did you ever imagine that you'd reach 100 games for the club?**

"No, not really.

"When you're that young, you don't tend to think too far ahead, you just enjoy playing.

"I remember going to watch first team games and never thinking that I would play for them, let alone reach 100 games.

"But I'd like to think my younger self would be really proud to know that I've made it to this point."

**How do you think you've changed as a player from your first**



### appearance to now?

“I feel like I’ve grown up a lot, both in my performances and as a person.

“I was really young when I made my league debut, and since then I’ve gained a lot of confidence.

“Now I feel like I really understand my role within the team and what’s expected of me at this level.”

### Who have been the biggest influences on your development at the club?

“I have to give special mentions to my coaches from when I was younger: Dan, John, Ticky and Marty.

“Without them I wouldn’t be where I am today.

“They pushed me, supported me, and let me enjoy the game, which made a huge difference in my development.”

### Looking back on those 100 games, which moment stands out the most?

“I have to say my goal against Birmingham last year to put us through to the next round of the cup.”



**I'D LIKE TO THINK MY  
YOUNGER SELF WOULD BE  
REALLY PROUD TO KNOW  
THAT I'VE MADE IT TO  
THIS POINT**



mkm.com

FREE  
LOCAL  
DELIVERY



Visit us in branch to  
explore our wide range of  
**BUILDING, TIMBER,  
PLUMBING, HEATING,  
BATHROOM,  
& LANDSCAPING  
SUPPLIES**

Scan here

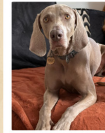






Renny's Lane Durham  
DH1 2RW 0191 374 2070

**MKM**





## Adventure Pups Home Boarding

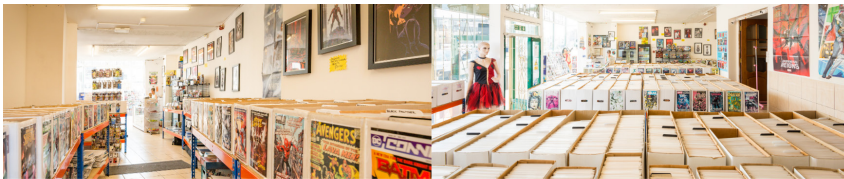


-  Fully Insured, DBS Checked,  
Trained in Animal first aid
-  Home away from home experience.  
NO CRATES OR KENNELS
-  Regular photo and video updates
-  Licensed with local council: SCC/243



 @AdventurePupsNE

 07504808509



## THE DARL KNIGHT

35 BONDGATE, DARLINGTON DL3 7JJ  
COMICS, MANGA, CARDS, SUPPLIES



# MEET THE SQUAD



2

**GRACE AYRE**

DEFENDER

SPONSORED BY:  
JAMES BURTONSHAW



3

**LAUREN BRIGGS**

DEFENDER

SPONSORED BY:  
ALAN WHITE



4

**TYLER TOLAND**

MIDFIELDER

AVAILABLE TO SPONSOR



5

**SARAH WILSON**

DEFENDER

SPONSORED BY:  
PJM



6

**SARAH ROBSON**

DEFENDER

SPONSORED BY:  
NEIL THORNTON



7

**BETH HEPPLE**

MIDFIELDER

SPONSORED BY:  
ADVENTURE PUPS & DARRIN'S SUPER ICES



8

**MOLLIE LAMBERT**

MIDFIELDER

SPONSORED BY:  
THE DARL KNIGHT



9

**LUCY WATSON**

FORWARD

AVAILABLE TO SPONSOR



10

**HANNAH BLAKE**

FORWARD

AVAILABLE TO SPONSOR



11

**ABBI GRANT**

FORWARD

AVAILABLE TO SPONSOR



13

**ANNA KING**

GOALKEEPER

SPONSORED BY:  
LEXI BARTLETT



14

**BECKY SALICKI**

DEFENDER

SPONSORED BY:  
BAMBRA & KEY INNS

# MEET THE SQUAD



16

**GRACE EDE**

FORWARD

SPONSORED BY:  
SIGNATURE CONSTRUCTION LTD



17

**MARIANA SPECKMAIER**

FORWARD

AVAILABLE TO SPONSOR



18

**ANGELA ADDISON**

FORWARD

AVAILABLE TO SPONSOR



19

**ELLA WILSON**

DEFENDER

AVAILABLE TO SPONSOR



20

**MICHAELA FOSTER**

DEFENDER

AVAILABLE TO SPONSOR



21

**AMBER STOBBS**

MIDFIELDER

SPONSORED BY:  
ELITE PAVING & LANDSCAPING



25

**LEYLA MCFARLAND**

FORWARD

AVAILABLE TO SPONSOR



27

**ABBEY JONES**

FORWARD

AVAILABLE TO SPONSOR



35

**CAT SHEPPARD**

GOALKEEPER

SPONSORED BY:  
THE WEIGH TO SHOP



15

**DEE BRADLEY**

MIDFIELDER

AVAILABLE TO SPONSOR



47

**LILY AGG**

MIDFIELDER

AVAILABLE TO SPONSOR



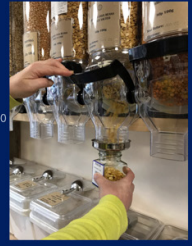
**DURHAM'S ZERO WASTE SHOP**  
 29C Front Street, Framwellgate Moor, DH15EE  
 Tel: 07340671326  
 Tues - Fri 10.00 - 18.00 Sat 10.00 - 16.00  
**REFILLS PLASTIC FREE ALTERNATIVES CAFE**

**THE WEIGH TO SHOP**  
 DRIED FOODS  
 SPICES  
 COFFEE  
 HOUSEHOLD LIQUIDS  
 GIFTS  
 HOT DRINKS  
 CEREALS  
 DRIED FRUIT  
 WORKSHOPS

**BRING YOUR CONTAINERS**  
 -----  
 theweightshop@outlook.com  
 FACEBOOK AND INSTAGRAM  
 @THEWEIGHTSHOP



**THE WEIGH TO SHOP**  
 29C Front Street,  
 Framwellgate Moor,  
 DH15EE  
 Tel: 07340671326  
 Tues - Fri 10.00 - 18.00  
 Sat 10.00 - 16.00



**BRING YOUR OWN CONTAINERS**



Reduce  
 Reuse  
 Recycle





## SUPPORTERS CLUB

FROM THE BLUE ARMY

Welcome from the DWSC, back at home for our final home game of the season!

Needless to say, it's been a really tough season both for the team and the fans.

But we are all still doing what we can to finish the season as positively as possible.

Welcome to the Sheffield fans who have made the journey today, we hope you enjoy the game and have a good trip home afterwards.

We should hopefully know whether we are safe or not by the time we kick off today, but whether we need the points to make sure of safety, or want the points to finish off our home games, I am sure that our team will be doing their very best to secure all three points.

Hopefully those fans who have become a little disappointed or lost the enthusiasm to attend recent matches have decided to come and get behind the team today.

We all need to give it everything both today and next week away to Newcastle to let the girls and the team behind the girls

know we have not stopped fighting, we are still here and we will support you no matter what!

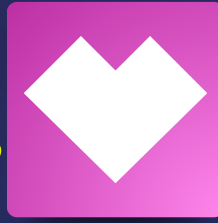
On a different note, we have arranged our end of season event at Bede Lodge with the great band Da Coda, a raffle and bingo - the date for the event is Saturday June 13th.

Tickets are priced at a very reasonable £5 - speak to one of us online or on a match day and we hope to see as many of you there as possible,

COME ON YOU DURHAM!

**Happy Birthday to our DWSC members who celebrate theirs in April:**

**Annie Sinclair  
Roz Dolby**



Clear, practical HR advice when you need it.

# Supporting managers to lead with confidence

## Managing with Confidence

*Bad News!* Sadly, you've missed the start of our Managing with Confidence course.

**Good News!** You can still join.

Our course is designed for managers who want clear, practical guidance on handling people's issues properly.

- The course starts: 17 April
- six half-day sessions
- Venue: Durham Cricket Club

For more  
information, visit  
**[Shrewd-hr.co.uk](https://shrewd-hr.co.uk)**

Our three-module bundle lets managers choose any three modules most relevant to their role or current challenges.

You can also select individual modules to best suit your team's needs.

 **Shrewd HR**

Proud HR Partner of DWFC



# Inn Hospitality Group

Local inns with fine hospitality at their core

PUB | ROOMS | FOOD



BOOK A TABLE | BOOK A ROOM





**6**

**SARAH ROBSON**

# Book your eye test

online or in store today



Book an appointment at [specsavers.co.uk](https://www.specsavers.co.uk)

Arnison Arnison Retail Park Tel 0191 814 2020  
Durham 1-4 North Road Tel 0191 383 9495

**Specsavers**



# THE SHEFFIELD UNITED VISITORS





## THE HEAD COACH



STEPHEN HEALY

Healy joined United as head coach in January from MK Dons where he enjoyed a short spell as head coach after working as first team coach for West Ham United last season.

Formerly of the Leicester City boys and international academy, Healy has also worked for the likes of New York Red Bulls.

## THE SKIPPER



ELLA KINZETT

Kinzett was appointed club captain ahead of the 2025/26 season after holding the role of vice-captain alongside goalkeeper Sian Rogers last season.

The midfielder joined the Blades in 2023 after progressing through the Manchester United academy where she won the FA Girls' Youth Cup 2022.



# SHEFFIELD UNITED

**THE BLADES VISIT THE NORTH EAST FOR THE THIRD TIME THIS SEASON AS THE BARCLAYS WSL2 CAMPAIGN REACHES ITS BUSINESS END...**

## LAST TIME OUT



United fell to a tough 5-2 defeat away against Southampton at St Mary's Stadium

The opener came when Andrews cut inside and found the bottom corner from the edge of the box to put the Blades in front.

But two goals in five minutes before the break swung the encounter as first Jess Simpson slotted home from close range from a corner, before McAlonie was able to slot home after United got caught out playing out from the back.

The Blades responded well and were awarded a penalty for handball inside the box. Andrews promptly stepped up to find the top corner.

But a mad final five minutes saw Bashford bundle home on the line, before things got worse when Jess Reavill saw red almost from kick-off for a foul on the edge of the box, Palmer stepping up to curl home a fourth from the resulting free-kick. Bashford had the final say as she found the back of the net deep into stoppage time.

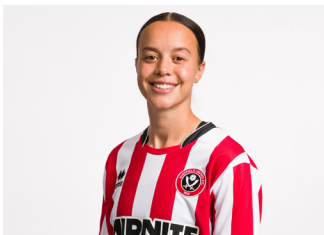
# SHEFFIELD UTD SQUAD



**SIAN ROGERS**

## GOALKEEPERS

Sian Rogers  
Charlotte Parker-Smith



**LEANNE COWAN**

## DEFENDERS

Leanne Cowan  
Abbie Lafayette  
Molly Graham  
Emma Taylor  
Scarlett Hill  
Sophie O'Rourke  
Jess Reavill



**CONNIE SCOFIELD**

## MIDFIELDERS

Ella Kinzett  
Charlie Devlin  
Tilly Bristow  
Shauna Guyatt  
Connie Scofield  
Simone Sherwood  
Mollie Rouse



**ALYSSA AHERNE**

## FORWARDS

Amy Andrews  
Joy Ralph  
Alyssa Aherne  
Lia O'Leary  
Grace Foy  
Lauren Thomas  
Eva Butler



ONE TO WATCH

**Joy Ralph** joined The Blades in the summer of 2025 from League of Ireland side Shamrock Rovers.

The teenager enjoyed a fruitful couple of years at Shamrock, showing herself to be one of the most promising young forwards in the league, capped for the Republic of Ireland youth team at Under 19s level.

After breaking through at DLR Waves, Ralph scored on her league debut for both her clubs and now takes her first steps into professional football with United.



ONE TO WATCH

**Charlie Devlin** joined United in the summer of 2025 after a two-year spell with fellow Barclays Women's Super League 2 side Birmingham City.

Coming through the Arsenal academy, Devlin went onto star for Millwall before earning a move to Manchester United in 2018.

The midfielder has also enjoyed spells at Charlton Athletic and Leicester City before going out on loan at Rangers last season.



PLAYED FOR BOTH

There are a number of players who have played for both Durham and Sheffield United - indeed, Amy Andrews in the current Blades squad featured for Durham in the 2023/24 season in what was her first move in the BWSL2.

In the Durham squad, meanwhile, Lucy Watson came through the ranks at Bramall Lane before earning a move to Chelsea.

Going further back, players such as Jess Clarke, Maria Farrugia, Danielle Cox, Ali Johnson and Georgia Robert have also played for both sides.



SIGNATURE CONSTRUCTION LTD



Greetings from the back of the stand!

The last home game of the season, although for many of us not the last match we will see.

Next week could be a very important occasion for North East Football, but that could depend on this weekend!

We welcome Sheffield United, a team linked to us in many ways - not just the three times we've played them already this season! Whether that makes it easier for either of us to prepare and play remains to be seen!

Looking back on the season to this point, we've had drama, excitement, disappointment and happiness and we look forward to more from August. I hope we can continue it all together.

Thank you to the club for allowing us to share it with you and to share it with others. I say, "the club", I mean "our club" and it certainly is!

Lee, Dawn, Mark and Jane have always

made us welcome, and, without them and the players, we wouldn't be able to do what we do or put together 'The Durham Roarcast' podcast - Thank you!

Thank you to our listeners who have been there with us all. Whether you have tuned-in from home or within the stadium itself, I hope you have enjoyed it as much as we have.

And a personal thank you to Young Colin and my other co-commentators during the season - you make it easier to convey what is in front of me and really add so much more!

Please join us for this and next week's game, inside and outside the ground, via [www.dhradio.org.uk](http://www.dhradio.org.uk)

Enjoy the game and let's hear the "Wild-cat Roar"!

**John**  
@JADMiddy



**VISION for EDUCATION**

# *Kick-start* a career in education



**Placements available in primary, secondary and SEND schools across the North East**

Join our **FREE National Teaching Assistant Programme** and earn while you learn the skills to become a Teaching Assistant



**Free online training**



**Paid in-school placement**



**Advice, guidance and dedicated support**



**Potential to secure a long-term or permanent role**



**PLACES ARE LIMITED**

**Scan the QR code to find out more and apply**

THE SUNDAY TIMES  
**Best Places to Work 2024**  
BIG COMPANY

 **REC** | Audited Education

Part of  **The Edwin Group**



# KIDS ZONE

**HEAD INSIDE FOR SOME FUN  
ACTIVITIES FOR BEFORE, DURING  
AND AFTER THE GAME!**

M W I E V N B A Y K A X D Q H O N Z  
 G H B G A L A M B E R T P W G L A P  
 E P R U M P V U T J A Y R E F P W V  
 Q Q I W Z T U B L A K E H W I B N N  
 C B G E A G O V R R F G X L G T F W  
 H M G P T T R O P O T W I P T O H I  
 B A S P D P S A M Y B O V D F L E L  
 H Y C J P F X O N P X S S L E A P S  
 H O R D J W D M N T Z B O F T N P O  
 J F O D E C Y T A D R R A N N D L N  
 G H F G T G S N D E F P B X Z L E H  
 O Y Y P V Y E U X B Z R R S Y T Z U

**AYRE  
 BRIGGS  
 TOLAND**

**WILSON  
 ROBSON  
 HEPPL  
 LAMBERT**

**WATSON  
 BLAKE  
 GRANT**

CAN YOU FIND ALL THE PLAYERS NAMES?

# WORDSEARCH



+



+



=



**ADD UP THE SHIRT NUMBERS OF THESE PLAYERS AND  
 CALCULATE THE FINAL NUMBER!**

# FOOTBALL MATHS

# BADGE QUIZ



CAN YOU NAME THE CLUB FROM  
THIS SNIPPET OF THEIR BADGE?

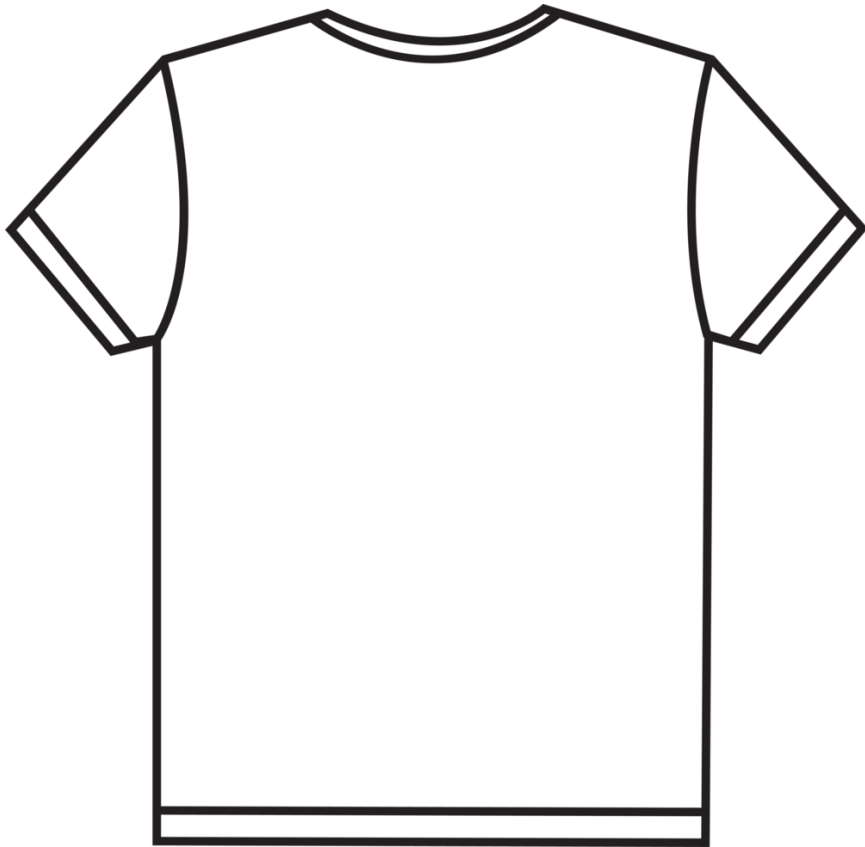
# FOOTBALL BINGO

HOW MANY OF THESE CAN YOU SPOT  
AT TODAY'S GAME?

 <p>DURHAM SCORE A GOAL</p>	 <p>DURHAM</p>	 <p>SPOT OUR MASCOT, CANDY</p>	 <p>THE REFEREE GIVES A CORNER</p>
 <p>DURHAM</p>	 <p>A PLAYER GETS A YELLOW CARD</p>	 <p>THE REFEREE GIVES A GOAL KICK</p>	 <p>A GOALKEEPER MAKES A SAVE</p>
 <p>THE REFEREE GIVES A FREE KICK</p>	 <p>DURHAM HAVE A SHOT</p>	 <p>DURHAM MAKE A SUBSTITUTION</p>	 <p>DURHAM</p>
 <p>DURHAM</p>	 <p>THE REFEREE GIVES A THROW IN</p>	 <p>A GOALKEEPER CATCHES THE BALL</p>	 <p>OFFSIDE!</p>

# DESIGN YOUR OWN SHIRT!

DESIGN YOUR OWN DURHAM WOMEN SHIRT BELOW. SEND IT US ON SOCIAL MEDIA AND YOU COULD WIN TICKETS TO AN UPCOMING HOME GAME!



EITHER TWEET YOUR DESIGN TO @DURHAMWFC OR EMAIL IT TO US ON  
MARK.DONNELLY@DURHAMWFC.CO.UK



# STATS & FACTS

## FIXTURES & RESULTS

DATE	OPPONENT			KO	SCORE
7 SEPT	PORTSMOUTH	A	BWSL2	2PM	W 2-0
14 SEPT	CHARLTON ATHLETIC	H	BWSL2	12PM	L 1-2
19 SEPT	SUNDERLAND	A	BWSL2	7PM	L 1-2
24 SEPT	SHEFFIELD UNITED	H	SWLC	7PM	D 1-1*
28 SEPT	CRYSTAL PALACE	H	BWSL2	12PM	D 1-1
5 OCT	BRISTOL CITY	A	BWSL2	2PM	L 1-2
12 OCT	NOTTINGHAM FOREST	H	BWSL2	12PM	W 3-0
16 OCT	LIVERPOOL	H	SWLC	7PM	L 1-2
2 NOV	SHEFFIELD UNITED	A	BWSL2	1PM	L 1-2
9 NOV	NEWCASTLE UNITED	H	BWSL2	12PM	D 1-1
16 NOV	SOUTHAMPTON	A	BWSL2	12PM	D 1-1
23 NOV	SUNDERLAND	A	SWLC	2PM	D 1-1**
7 DEC	IPSWICH TOWN	H	BWSL2	12PM	D 1-1
14 DEC	SHEFFIELD UNITED	H	AWFAC3	12PM	L 0-1
21 DEC	BIRMINGHAM CITY	A	BWSL2	2PM	L 0-3
25 JAN	CRYSTAL PALACE	A	BWSL2	12PM	L 0-4
1 FEB	PORTSMOUTH	H	BWSL2	12PM	W 2-1
8 FEB	BIRMINGHAM CITY	H	BWSL2	12PM	D 1-1
15 FEB	CHARLTON ATHLETIC	A	BWSL2	12PM	L 2-4
20 FEB	SUNDERLAND	H	BWSL2	7PM	L 2-3
15 MAR	IPSWICH TOWN	A	BWSL2	12PM	L 1-2
22 MAR	SOUTHAMPTON	H	BWSL 2	12PM	D 0-0
29 MAR	NOTTINGHAM FOREST	A	BWSL2	2PM	L 1-2
5 APR	BRISTOL CITY	H	BWSL2	12PM	D 2-2
26 APR	SHEFFIELD UNITED	H	BWSL2	12PM	
2 MAY	NEWCASTLE UNITED	A	BWSL2	3PM	

\*Sheffield United win on penalties

\*\*Sunderland win on penalties

## TODAY'S GAMES

Durham v Sheffield United (12pm)  
Birmingham City v Ipswich Town (2pm)  
Sunderland v Crystal Palace (2pm)  
Portsmouth v Nottingham Forest (2pm)  
Bristol City v Newcastle United (2pm)  
Southampton v Charlton Athletic (4pm)

## LEAGUE TABLE

	TEAM	PLD	PTS	GF	GA	GD
1	BIRMINGHAM CITY	20	41	44	21	+23
2	CHARLTON ATHLETIC	20	41	29	17	+12
3	CRYSTAL PALACE	20	38	36	24	+12
4	NEWCASTLE UNITED	20	33	31	22	+9
5	SOUTHAMPTON	20	31	39	24	+15
6	BRISTOL CITY	20	31	41	30	+11
7	NOTTINGHAM FOREST	20	27	26	32	-6
8	SUNDERLAND	20	24	26	31	-5
9	SHEFFIELD UNITED	19	18	19	33	-14
10	DURHAM	20	16	24	34	-10
11	IPSWICH TOWN	19	14	17	40	-23
12	PORTSMOUTH	20	14	22	46	-24

## PLAYER STATS

PLAYER	STARTS	SUB ON	GOALS	YELLOWS	REDS
GRACE AYRE	22	2		5	
LAUREN BRIGGS	21	2		3	
TYLER TOLAND	19	3	1	3	
SARAH WILSON	21	2		4	
SARAH ROBSON	3	9		2	
BETH HEPPLE	23	1	9		
MOLLIE LAMBERT	20	2	4	3	
HANNAH BLAKE	10	6	1		
ABBI GRANT	2				
ANNA KING	3			1	
BECKY SALICKI	4	3		4	
DEE BRADLEY	4	1		2	
GRACE EDE	13	2	1		
MARIANA SPECKMAIER	13	3	3	1	
ANGELA ADDISON					
ELLA WILSON	5				
MICHAELA FOSTER	23		2		
AMBER STOBBS	5	2			
LEYLA McFARLAND	5	14	1		
ABBIE JONES	10	5		1	
CAT SHEPPARD	21			2	
LUCY WATSON	8	10	2	2	
GRACE COLLINSON	2	9			
LILY AGG	2	2	1		



# WE WANT YOUR FEEDBACK!

SCAN BELOW AND LET US KNOW WHAT YOU THOUGHT OF YOUR VISIT TODAY!





B2B

## Injection Moulding Ltd

A professional plastic injection moulding service is offered from modern facilities, using state of the art moulding and ancillary equipment.



I need help coming up with a product idea?

If you have a product idea but don't know how to make it then we can assist in taking concepts through the necessary stages to full production.



I need quite a large order, can you handle that?

No job too small or large - Injection moulding from 1g to 200g and for runs as small as 50 to millions.



I'm on a tighter budget, can I still use your services?

We work closely with several UK and Chinese partner companies in order to improve our services for our customers. Working with these partners means we can offer:

- Fully hardened production tooling
- Low-cost tooling for small-volume production
- Rapid prototype tooling
- Advice on cost-effective tooling design.

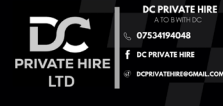
Find out more information:  
[b2binjectionmoulding.co.uk](http://b2binjectionmoulding.co.uk)



**JOHN  
PARKINSON**



**vh bio** responsive service  
and support



Trade Recruitments Solutions



**DT POWER  
SOLUTIONS**



**MP**  
MAGNUM PROPERTIES



**ATKINSON  
FAMILY**

**SINCLAIR  
FAMILY**





**CLUB PATHWAY**  
ALL THE LATEST NEWS



The success just keeps on coming for our PGA U16 side!

Callum Croft's side have enjoyed a fantastic season to date and victory on Saturday saw them seal the title in the JPL Warriors League - Premier Red.

The Young Blues secured top spot with four games still to play, and so far have a 100 per cent record in league fixtures having played 14 and won 14.



Want to join our pathway next season?  
We're currently welcome trial applicants for our U9, U10, U12 & U14 squads, and expressions of interest in joining our PGA U21s!  
Applications can be submitted now at [durhamwfc.co.uk](http://durhamwfc.co.uk)

It's a big weekend for our PGA U21s - as they face Manchester United in the PGA Plate Final!  
Keep your eyes on our website and social media to see if the Young Blues bring home the silverware!



Want to find out the latest from the Durham Women FC Pathway throughout the season?  
Make sure you're following our dedicated Pathway account on X - @DWFCPathway



# 2026/27 SEASON TICKETS

COMING SOON

REGISTER YOUR INTEREST NOW



SCAN HERE

OR VISIT [DURHAMWFC.CO.UK](http://DURHAMWFC.CO.UK)



# TEAM NEWS



## DURHAM

## SHEFFIELD UTD

13	ANNA KING	●●●	●●●
35	CAT SHEPPARD	●●●	●●●
2	GRACE AYRE	●●●	●●●
3	LAUREN BRIGGS	●●●	●●●
4	TYLER TOLAND	●●●	●●●
5	SARAH WILSON	●●●	●●●
6	SARAH ROBSON	●●●	●●●
7	BETH HEPPLE	●●●	●●●
8	MOLLIE LAMBERT	●●●	●●●
9	LUCY WATSON	●●●	●●●
10	HANNAH BLAKE	●●●	●●●
11	ABBI GRANT	●●●	●●●
14	BECKY SALICKI	●●●	●●●
15	DEE BRADLEY	●●●	●●●
16	GRACE EDE	●●●	●●●
17	MARIANA SPECKMAIER	●●●	●●●
18	ANGELA ADDISON	●●●	●●●
19	ELLA WILSON	●●●	●●●
20	MICHAELA FOSTER	●●●	●●●
21	AMBER STOBBS	●●●	●●●
25	LEYLA MCFARLAND	●●●	●●●
27	ABBIE JONES	●●●	●●●
46	LILLIE COULSON	●●●	●●●
47	LILY AGG	●●●	●●●
48	GRACE COLLINSON	●●●	●●●

SIAN ROGERS	1
CHARLOTTE PARKER-SMITH	12
LEANNE COWAN	2
ABBIE LAFAYETTE	3
ELLA KINZETT	4
MOLLY GRAHAM	5
EMMA TAYLOR	6
AMY ANDREWS	7
JOY RALPH	9
CHARLIE DEVLIN	10
ALYSSA AHERNE	11
LIA O'LEARY	14
TILLY BRISTOW	17
SCARLETT HILL	18
GRACE FOY	19
SOPHIE O'ROURKE	20
LAUREN THOMAS	21
SHAUNA GUYATT	22
CONNIE SCOFIELD	23
SIMONE SHERWOOD	24
MOLLIE ROUSE	25
EVA BUTLER	28
JESS REAVILL	41

START  
SUB ON  
GOAL

START  
SUB ON  
GOAL

REFEREE: FABIO ROQUE  
ASSISTANT REFEREES: JOSHUA BRAYSHAW & DANIELLE WHITWORTH  
FOURTH OFFICIAL: MAGDALENA GOLBA