

# DURHAM

VS IPSWICH TOWN



BARCLAYS  
Womens Super League 2

OFFICIAL MATCH DAY PROGRAMME | £3



Plastic Furniture Company

Plastic professionals since 1978.

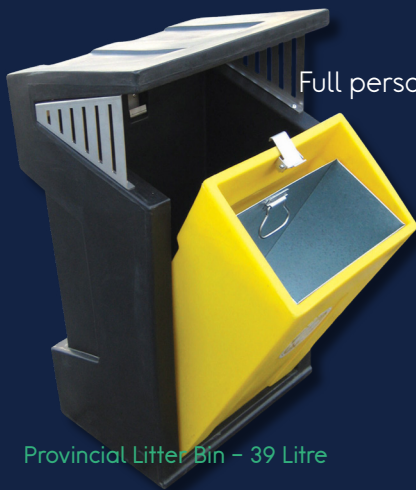


A-Frame Picnic Table and Bench Set

# URBAN FURNITURE & BINS

Shipped Worldwide

- Member of Made in Britain
- Maintenance Free
- Manufactured in the UK
- Weather resistant
- Full personalisation service available (design and print)
- Recycled range available



Provincial Litter Bin - 39 Litre



[plasticfurniturecompany.co.uk](http://plasticfurniturecompany.co.uk)



# WELCOME TO DURHAM WOMEN FC

## DURHAM WOMEN FC

DURHAM UNIVERSITY SPORTS PARK, MAIDEN CASTLE, STOCKTON ROAD,  
DURHAM, DH1 3SE

## BOARD OF DIRECTORS

LEE SANDERS, DAWN HEPPLÉ, PATRICK CONNOLLY, FRANCES CONNOLLY,  
FRED GRAINGER, PETER WARBURTON OBE

## FIRST TEAM OFFICIALS & STAFF

### HEAD OF FOOTBALL

LEE SANDERS

### HEAD OF FINANCE

DAWN HEPPLÉ

### CHIEF OPERATING OFFICER

MARK DONNELLY

### HEAD OF SAFEGUARDING

MARC MCPHILLIPS

### FIRST TEAM HEAD COACH

ADAM FURNESS

### FIRST TEAM ASSISTANT COACH

GEORGE ANTHONY

### PGA U21 HEAD COACH

MARTIN HERDMAN

### GOALKEEPING COACH

JON COLLINSON

### ANALYST

JACK CAMARDA

### PERFORMANCE LEAD

SIMON FAIRBAIRN

### STRENGTH & CONDITIONING COACHES

RHIANNA TELFER

CONNOR POWER

### LEAD PHYSIOTHERAPIST

NAT GUTTERIDGE

### SPORTS THERAPIST

ELEANOR CONNOR

### CLUB DOCTOR

DOUGAL SOUTHWARD

### NUTRITIONIST

VICTORIA DUKE

### MEDIA & MARKETING OFFICER

JANE THWAITES

### CONTENT CREATORS

LAURA SMITH

THOMAS WHITTON

RIANNA CURRAN

### CLUB PHOTOGRAPHERS

CRAIG MCNAR

WILL CHESHIRE

### CONTACT EMAIL

INFO@DURHAMWFC.CO.UK

## WHAT'S INSIDE?



### 4 CAPTAIN'S NOTES



### 10 BACK TO MY ROOTS

### 13 THE BIG INTERVIEW



### 27 THE VISITORS

#### 7 LAST TIME OUT

#### 9 LATEST NEWS ROUND-UP

#### 18 MEET THE SQUAD

#### 21 DURHAM WOMEN FC SUPPORTERS CLUB

#### 33 JOHN MIDDLETON COLUMN

#### 45 CLUB PATHWAY ROUND-UP



**SARAH** **WILSON**

BARCLAYS  
**WSL2**

**hummel**

**VISION EDUCATION**



## GOOD AFTERNOON AND WELCOME TO TODAY'S BARCLAYS WOMEN'S SUPER LEAGUE 2 GAME AGAINST IPSWICH TOWN

### Wilson on our Subway Women's League Cup fixture against Sunderland...

"There are a lot of positives to take away from the cup game against Sunderland.

"We played some good stuff in spells.

"The cup allows us to rotate and have a different focus, it gives us an opportunity to utilise the squad and give players valuable and deserved minutes on the pitch.

"Although we were unfortunate with the penalty shootout bonus point, we were pleased with the result."

### Wilson on today's fixture against Ipswich...

"These are the most difficult games, when you don't know what to expect.

"We are feeling positive after a run of good results but we are aware of the potential threats they bring.

"The BWSL2 is such a competitive league and on the day, any team can take points, so it's really important we stay focused on ourselves."

### Wilson on what she'd like to see from the team...

"We want to see the same fight and determination that we have seen in the past few results - continued work rate and application of our game plan."



**ON THE DAY, ANY TEAM CAN TAKE POINTS SO IT'S REALLY IMPORTANT WE STAY FOCUSED ON OURSELVES**

### Wilson on the Blue Army...

"I'd just like to say a big thank you for your continued support so far this season.

"It really has given us that extra boost and we need you to continue getting behind us.

"These next few weeks are really important and we can wait to see you back at MC today!"

**Sarah Wilson**

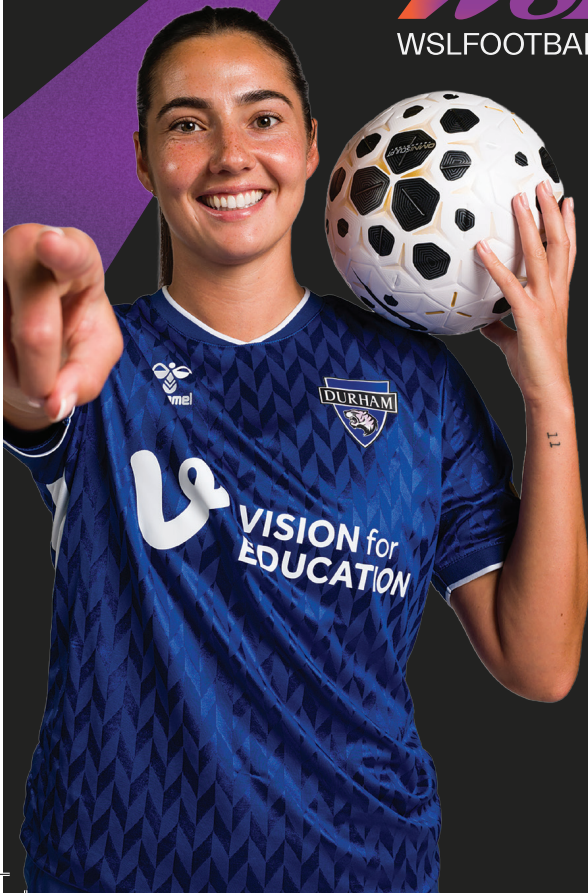
# WATCH THIS

Live every week on YouTube.



**WSL2**

WSLFOOTBALL.COM





## LAST TIME OUT DURHAM 1-1 NEWCASTLE

It ended all square at Maiden Castle in the North East Derby.

Following a flurry of chances in the opening ten minutes, it was the visitors that would open the scoring first through their number 10 Molly Pike.

Playing a low cross into the box from the byline, Molly Pike found herself connecting with the ball before Michaela Foster, slotting the ball beneath the out-rushing Sheppard to take the lead.

This lead, however, would not last long.

Following a short game of pinball in the box following a long throw, the ball would veer out into the path of Mollie Lambert, firing first hand between multiple bodies into the near post.

From here, either side experienced a real whirlwind of efforts, with Durham's closest coming in the 24th minute, as Mariana Speckmaier's audacious back heel was blocked heading goalwards.

On the stroke of half time, Durham felt that they had finally taken the

lead, and Poppy Pritchard, her first goal since her return. Redirecting a ball across the face of goal, winger Hannah Blake placed the ball on the plate for the City loanee, who, believing she had scored against her former club, and scored on her return, wheeled off in celebration. The celebrations, unfortunately, were cut short. Noticing the Linesman's raised flag on the flank, Pritchard's arms fell by her sides in disappointment, as the score remained even.

The remaining 45 minutes saw Newcastle take hold of the reins. Peppering Durham's goal with efforts from range, the Wildcats' defence stood firm until the very end, with Sheppard putting in another excellent performance in to maintain the point.

Durham found themselves a last gasp opportunity in the 87th minute, with Lambert one on one with the goalkeeper for a second, though an excellent last-ditch challenge from Newcastle's Aoife Mannion foiled the prospect of three points.

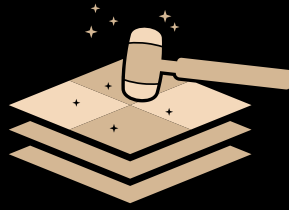
A good point nonetheless, against our Tyneside neighbours.

## STARTING LINE-UP

- 35 CAT SHEPPARD
- 2 GRACE AYRE
- 3 LAUREN BRIGGS
- 4 TYLER TOLAND
- 5 SARAH WILSON
- 7 BETH HEPPLE
- 8 MOLLIE LAMBERT
- 10 HANNAH BLAKE
- 15 POPPY PRITCHARD
- 17 MARIANA SPECKMAIER
- 20 MICHAELA FOSTER

## KEY MOMENTS

-  10' GOAL NEWCASTLE  
Molly Pike
-  15' GOAL DURHAM  
Mollie Lambert
-  74' YELLOW CARD  
Jordan Nobbs (Newcastle)



**ELITE PAVING & LANDSCAPING**

0 7 7 1 4 8 5 6 6 7 5



pace  
health club

**CALLING ALL  
DURHAM STUDENTS!**

*Student Memberships Available*

GYM  
SAUNA  
STEAM ROOM  
HEATED SWIMMING  
POOL  
JACUZZI  
TREATMENT ROOMS

**JOIN TODAY!**



# WADDINGTON STREET CENTRE

Registered Charity No. 701514

**A local Mental Health Charity in the centre of Durham**

**We aim to deliver effective support through life skills by offering social, physical and educational opportunities in a safe and welcoming environment.**

**Find out more about referrals, volunteer opportunities and making a donation by calling 0191 386 0702 or visiting [www.waddingtoncentre.co.uk](http://www.waddingtoncentre.co.uk)**

**Available to residents in County Durham aged 18 + years**



**Please scan to donate**





## MY FIRST TEAM...

My first football club was the Smithtown Kickers! I have played football all my life and when I hit the age where I could play for a club, my parents signed me up. I loved playing all kinds of sports growing up but football has always held a special place in my heart.

## MY FIRST FOOTBALL HERO...

Gareth Bale! I would watch Tottenham games with my Dad on TV, he's from England and a huge Tottenham fan! When they played the New York Red Bulls, I got to watch him live with my club team and that solidified him as my favorite!

## MY EARLIEST FOOTBALL MEMORY...

My earliest football memory has got to be at Peewee Football, I don't know if that's what you guys call it here, but it's where you play when you're four or five years old in little nets. When I got put with the girls my age, I had an extra foot of height on everyone else and ended up scoring too many goals. They made me switch teams so that I could even it out for the other team, and then I got moved up an age group! That might be the last time I scored a goal now that I think about it...

## MY ADVICE TO THE NEXT GENERATION...

Just try your best, have fun, and make the most of each opportunity you have!

# BACK TO MY ROOTS

WITH CAT SHEPPARD



Catriona  
Sheppard





The PFC Trust was set up in 2019 by a small group of like minded individuals who wanted to make a difference. Since then we have awarded over 1.2m in grants / donations to local causes. It is our mission to create positive change in our community.

We work with a range of partners to ensure that individuals and organisations are best placed to reach their goals.

This support is different for everyone we work with, but it can include capacity building support, funding and training opportunities.

**WE BELIEVE WE HAVE  
CHANGED LIVES AND  
THE LIFE CHANCES  
OF MANY  
AND NOW YOU CAN HELP  
US, CHANGE LIVES TOO.**



**Volunteer**



**Donate**



**Become a  
Patron**



For more information about The PFC Trust, Becoming Involved or How we may be able to help you. **Get in Touch!**

[www.thepfctrust.org](http://www.thepfctrust.org)  
[pfc.trust@outlook.com](mailto:pfc.trust@outlook.com)

[/thePFCtrust](https://www.facebook.com/thePFCtrust)  
[@/thepfctrust](https://www.instagram.com/thepfctrust)



# THE BIG INTERVIEW

# MOLLIE LAMBERT

MOLLIE LAMBERT SITS DOWN FOR OUR BIG INTERVIEW...



**Ahead of today's fixture, we caught up with Mollie Lambert to gain insight on the season so far and the team's push for three points in our final league fixture of 2025 at Maiden Castle.**

The dynamic midfielder has been with the club since July 2020 and has impressed with over 100 appearances and several goals for The Blues.

Lambert was awarded the 2024 North East Football Writers' Association Women's Player of The Year, and shortlisted for the 2024-25 Women's Championship Player of the Season.

And here, she reflects on the season so far and looks ahead to a crucial afternoon at Maiden Castle...

**Lambert on the mood in the camp...**

"The atmosphere is great.

"The girls have been working hard on the training pitch and Ipswich is a

game that we're looking forward to.

"Obviously, we haven't played Ipswich before, but we know they're well drilled.

"The three points are up for grabs for anyone who comes to Maiden Castle, and we hope it goes our way."

**Lambert on the importance of winning the three points...**

"We've had two draws on the bounce now, so we need that win to kickstart our season and build our momentum.

"We were hoping our League Cup game against Sunderland would go a different way, but we've built on the positives from that fixture leading into Ipswich, and hopefully it is going to be three points gained for us."

**Lambert on what she wants to see from the team after the Winter Break...**

"We want to be finishing all of our games on top.



“We’ve had a few draws, so we need to find ways to win, score goals and be clinical.

“We’re working really hard on the training pitch and it is all about building relationships within the team and getting that end result.”

### **Lambert on the Blue Army throughout the season so far...**

“They’ve been amazing, they come up and down the country, and we hear them at every game.

“It’s such a special feeling to have those supporters follow us and it’s a tribute to Harry Tidbury as well who’s sadly not here with us anymore.

“He was a prime example of what our supporters are, showing up week in and week out.

“It’s amazing to have our fans, and we do this for them.”

### **Lambert on the Blue Army throughout the season so far...**

“My personal highlights are probably scoring goals.

“It’s always something you remember, but I still want to work on it and work harder on the training pitch.

“I’m not 100% complete yet, but hopefully performances start to show individually so that I can walk off the pitch knowing I’ve had a great season.”

*Mollie Lambert is sponsored by The Darl Knight*



**IT'S ALL ABOUT BUILDING  
RELATIONSHIPS WITHIN THE  
TEAM AND GETTING THAT  
END RESULT**



mkm.com

FREE  
LOCAL  
DELIVERY



Visit us in branch to  
explore our wide range of  
**BUILDING, TIMBER,  
PLUMBING, HEATING,  
BATHROOM,  
& LANDSCAPING  
SUPPLIES**

Scan here

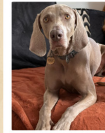






Renny's Lane Durham  
DH1 2RW 0191 374 2070

**MKM**





## Adventure Pups Home Boarding

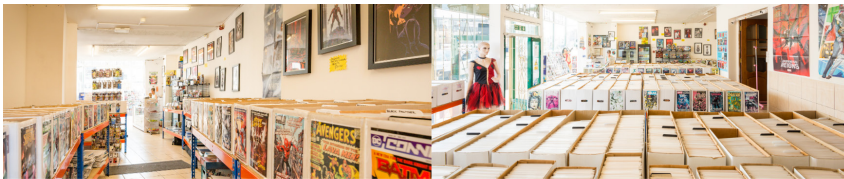


-  Fully Insured, DBS Checked,  
Trained in Animal first aid
-  Home away from home experience.  
NO CRATES OR KENNELS
-  Regular photo and video updates
-  Licensed with local council: SCC/243



 @AdventurePupsNE

 07504808509



## THE DARL KNIGHT

35 BONDGATE, DARLINGTON DL3 7JJ  
COMICS, MANGA, CARDS, SUPPLIES



# MEET THE SQUAD



2

**GRACE AYRE**

DEFENDER

SPONSORED BY:  
JAMES BURTONSHAW



3

**LAUREN BRIGGS**

DEFENDER

SPONSORED BY:  
ALAN WHITE



4

**TYLER TOLAND**

MIDFIELDER

AVAILABLE TO SPONSOR



5

**SARAH WILSON**

DEFENDER

SPONSORED BY:  
PJM



6

**SARAH ROBSON**

DEFENDER

SPONSORED BY:  
NEIL THORNTON



7

**BETH HEPPLE**

MIDFIELDER

SPONSORED BY:  
ADVENTURE PUPS & DARRIN'S SUPER ICES



8

**MOLLIE LAMBERT**

MIDFIELDER

SPONSORED BY:  
THE DARL KNIGHT



9

**LUCY WATSON**

FORWARD

AVAILABLE TO SPONSOR



10

**HANNAH BLAKE**

FORWARD

AVAILABLE TO SPONSOR



11

**ABBI GRANT**

FORWARD

AVAILABLE TO SPONSOR



13

**ANNA KING**

GOALKEEPER

SPONSORED BY:  
LEXI BARTLETT



14

**BECKY SALICKI**

DEFENDER

SPONSORED BY:  
BAMBRA & KEY INNS

# MEET THE SQUAD



16

**GRACE EDE**  
FORWARD

SPONSORED BY:  
SIGNATURE CONSTRUCTION LTD



17

**MARIANA SPECKMAIER**  
FORWARD

AVAILABLE TO SPONSOR



18

**ANGELA ADDISON**  
FORWARD

AVAILABLE TO SPONSOR



19

**ELLA WILSON**  
DEFENDER

AVAILABLE TO SPONSOR



20

**MICHAELA FOSTER**  
DEFENDER

AVAILABLE TO SPONSOR



21

**AMBER STOBBS**  
MIDFIELDER

SPONSORED BY:  
ELITE PAVING & LANDSCAPING



25

**LEYLA MCFARLAND**  
FORWARD

AVAILABLE TO SPONSOR



27

**ABBEY JONES**  
FORWARD

AVAILABLE TO SPONSOR



35

**CAT SHEPPARD**  
GOALKEEPER

SPONSORED BY:  
THE WEIGH TO SHOP



15

**POPPY PRITCHARD**  
FORWARD

AVAILABLE TO SPONSOR

## SPONSOR A PLAYER

Want to show your support for your favourite player while gaining excellent exposure?

Sponsor a player for just £500+VAT!

Email [mark.donnelly@durhamwfc.co.uk](mailto:mark.donnelly@durhamwfc.co.uk)  
for more details!



**DURHAM'S ZERO WASTE SHOP**  
 29C Front Street, Framwellgate Moor, DH15EE  
 Tel: 07340671326  
 Tues - Fri 10.00 - 18.00 Sat 10.00 - 16.00  
**REFILLS PLASTIC FREE ALTERNATIVES CAFE**



**THE WEIGH TO SHOP**  
 29C Front Street,  
 Framwellgate Moor,  
 DH15EE  
 Tel: 07340671326  
 Tues - Fri 10.00 - 18.00  
 Sat 10.00 - 16.00



**BRING YOUR OWN CONTAINERS**

**THE WEIGH TO SHOP**

- DRIED FOODS
- SPICES
- COFFEE
- HOUSEHOLD LIQUIDS
- LIQUIDS
- GIFTS
- HOT DRINKS
- CEREALS
- DRIED FRUIT
- WORKSHOPS

**BRING YOUR CONTAINERS**

theweighshop@outlook.com  
 FACEBOOK AND INSTAGRAM  
 @THEWEIGHTOSHOP



Reduce  
 Reuse  
 Recycle

www.theweighshop.co.uk





## SUPPORTERS CLUB FROM THE BLUE ARMY

Welcome from the DWSC!

Unfortunately last month we lost one of our original Blue Army members, Harry Tidbury.

Harry was the person who voted me into the position I am in today as Chair of the DWSC and was one of our original committee members before later moving to a special advisory role. I will always be grateful to have had Harry by my side as a committee member, advisor and most of all, as my friend.

I know that a lot of people are feeling the same way I/we do at the moment and feel that there is a 'Harry sized hole' in our 'Blue Army'. However, I can't help but smile when looking at many of the images we have seen over the last few weeks, as Harry was never seen without that smile which always brings one to my face. I will forever miss his company but I feel that he will always be with us especially at the matches even whilst sitting alone playing in the furthest places from Maiden Castle.

This month we are running an away coach trip to Birmingham on the 21st December. At the moment we still have seats available but we are expecting these to be taken very soon so if you are interested, let us know.

We are still actively looking to increase our membership.

All funds are re-invested into supporting the first team and development teams as well as enhancing the fan's matchday experience. If you have already paid for your membership don't forget to come and collect your membership pack on a match day.

If you haven't yet signed up, you can also do this on a matchday, come and see us. For your fee you will get a membership card, pin badge, legends poster, discounted entry to Durham Cestria games, personally signed birthday card from your favourite player, as well as exclusive member events and perks.

If it is your birthday in December come and collect your birthday card signed by your favourite player.

We also have exclusive keyrings and badges for those attending their first Durham game anytime during this season, come and see us.

Enjoy the match!

**Happy Birthday to our DWSC members who celebrate theirs in December:**

**Rod McLeod  
Andy Musgrave  
Kathleen Kerr**



Proud HR Partner of DWFC

# Bespoke HR services that wrap around your business



Supporting businesses through pivotal change

Find out more at [shrewd-hr.co.uk](http://shrewd-hr.co.uk)



Fast, effective, and affordable support



Everything your business needs





# Inn Hospitality Group

Local inns with fine hospitality at their core

PUB | ROOMS | FOOD



BOOK A TABLE | BOOK A ROOM



# REMEMBERING HARRY TIDBURY

AHEAD OF KICK-OFF TODAY, WE WILL COME TOGETHER TO REMEMBER HARRY TIDBURY.

HARRY WAS ONE OF OUR LONGEST-SERVING FANS, ATTENDING OUR FIRST-EVER GAME IN THE WSL AGAINST SUNDERLAND IN 2014 AFTER READING ABOUT THE FIXTURE IN THE LOCAL NEWSPAPER.

ALTHOUGH A DEVOUT SUNDERLAND FAN ON THE MEN'S SIDE OF THE GAME, THERE WAS ONLY ONE WOMEN'S TEAM FOR HIM - AND THAT WAS DURHAM.

OVER THE LAST DECADE, HARRY HAS SUPPORTED THE CLUB UP AND DOWN THE COUNTRY, ATTENDING HUNDREDS OF FIRST-TEAM, CESTRIA AND PATHWAY FIXTURES.

SUCH WAS HIS LOVE FOR THE CLUB, HE EVEN POSTPONED OPERATIONS IN ORDER TO ATTEND OUR GAMES.

HE WAS DEEPLY ADORED BY ALL OUR PLAYERS - PAST AND PRESENT - STAFF AND FELLOW SUPPORTERS.

PLEASE JOIN US IN A PERIOD OF SILENCE BEFORE TODAY'S GAME, AS WE REMEMBER ONE OF OUR LONGEST-SERVING SUPPORTERS.

**REST IN PEACE, HARRY.**



# Book your eye test

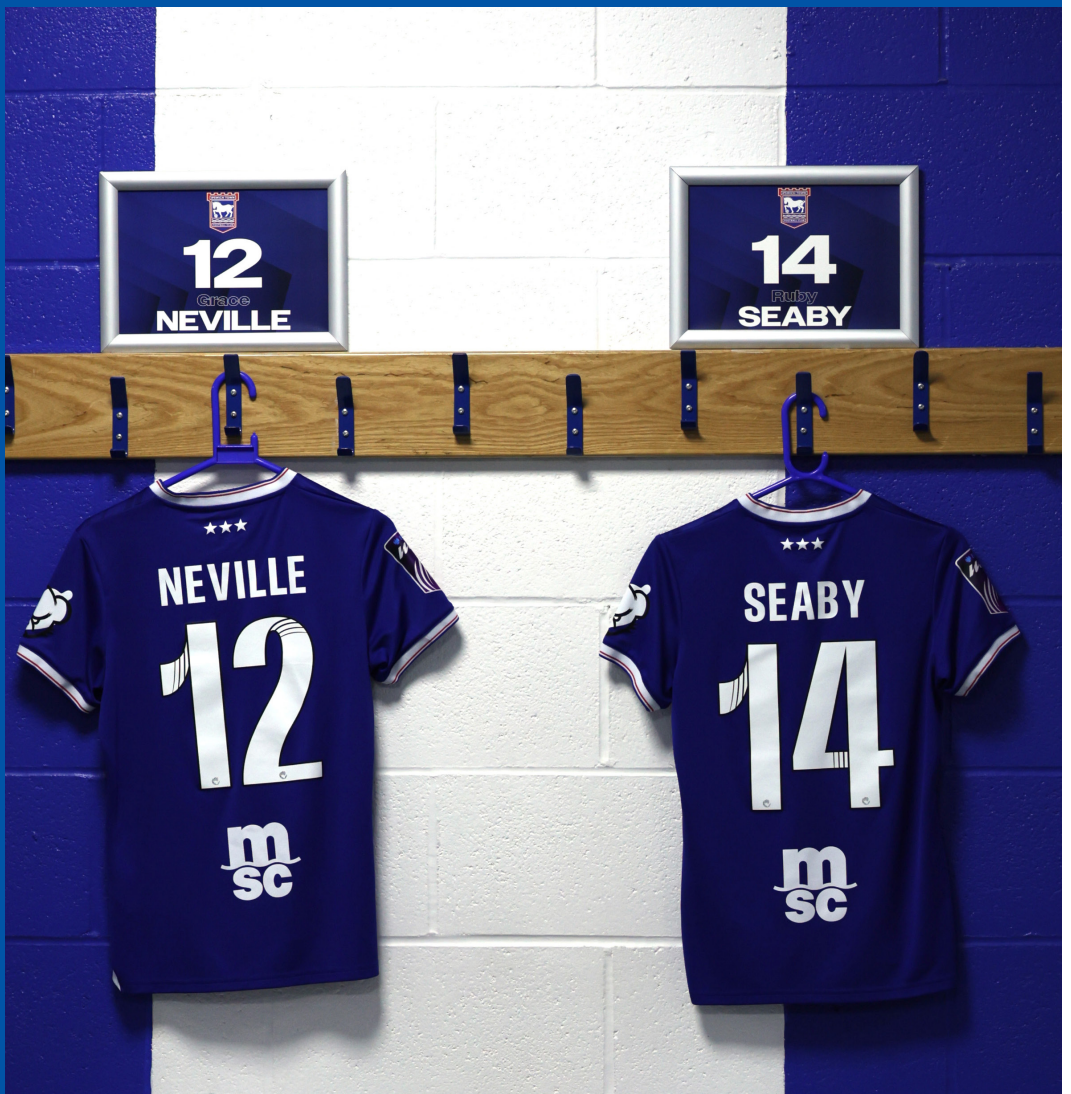
online or in store today



Book an appointment at [specsavers.co.uk](https://www.specsavers.co.uk)

Arnison Arnison Retail Park Tel 0191 814 2020  
Durham 1-4 North Road Tel 0191 383 9495

**Specsavers**



# THE IPSWICH TOWN VISITORS





## THE HEAD COACH



Joe Sheehan was appointed Ipswich First Team manager in February 2019 after a period of managing their U21 Academy side. Since his appointment, he has led Ipswich to the fifth round of the FA Cup as well as being the first manager to take a fourth tier side to do so.

## THE SKIPPER



The defender has been with the Blues since 2019 after joining their WSL Academy Squad from Essex RTC - making her senior debut in 2020. Since then, Boswell has become a staple in Ipswich's backline, being named captain in 2023.



# IPSWICH TOWN

**IPSWICH VISIT MAIDEN CASTLE FOR THE FIRST TIME AFTER GAINING PROMOTION LAST YEAR - WITH BOTH SIDES EYEING THREE POINTS**

## LAST TIME OUT



Ipswich Town Women lost 2-1 to Crystal Palace at the Jobserve Community Stadium last time out in the Barclays Women's Super League 2.

Town scored first through Sophie Peskett, her first goal of the season, when she dispossessed a Palace

defender before finishing with just the keeper to beat.

Ashleigh Weerden equalised for Palace in the 60th minute with a powerful shot into the roof of the net.

Then substitute Abbie Larkin put Palace ahead in the 84th minute from range to seal the points for the Eagles.

Ipswich were last in action in the Subway Women's League Cup as they were beaten 2-0 by top flight side London City Lionesses.

Joe Sheehan's side currently sit on four points in the league having beaten Portsmouth on home soil and drawn with table-toppers Charlton.

# IPSWICH SQUAD



**LAURA HARTLEY**

## GOALKEEPERS

Netalia Negri  
Laura Hartley



**GRACE NEVILLE**

## DEFENDERS

Maria Boswell  
Summer Hughes  
Leah Mitchell  
Grace Neville  
Megan Wearing  
Bethan Roe  
Paige Peake



**RUBY DOE**

## MIDFIELDERS

Charlotte Fleming  
Sophie Baigent  
Kyra Robertson  
Lucy O'Brien  
Shauna Guyatt  
Ruby Seaby  
Sophie Peskett  
Ruby Doe  
Maddy Earl  
Jenna Dear  
Kaci-Jai Bonwick



**RIANNA DEAN**

## FORWARDS

Natasha Thomas  
Rianna Dean



ONE TO WATCH

Arriving in the summer of 2019 from Essex RTC, **Sophie Peskett** was initially part of Ipswich's WSL academy squad, making her senior debut for Ipswich at just 16 years old.

She has since become an extremely vital player for the Blues - becoming the club's first professional women's footballer in the summer of 2021.

Last season, she totalled 23 goals in the National League South which made her as the league's top goalscorer.



ONE TO WATCH

Defender **Paige Peake** returned to the Blues in the summer from Southampton, after being a successful product of the club's Academy.

She made over 50 appearances for the Ipswich first team before leaving for the Saints in 2022.

An experienced WSL2 player, Peake has established herself as an important player for Ipswich - bagging goals and assists this term.



PLAYED FOR BOTH

There are only a handful of players who have played for both Durham and Ipswich Town - which is perhaps unsurprising given the geographical distance between the two sides.

Of the current Durham squad, both **Angela Addison** and **Lucy Watson** have featured for Ipswich.

Addison joined the Tractor Girls on a permanent basis last season and played 16 times, scoring seven goals en route to a title-winning campaign.

Watson joined Ipswich in January 2025 on a half-season loan from Chelsea, playing 10 times to help the side over the line in the race for promotion.



SIGNATURE CONSTRUCTION LTD



Greetings from the Back of The Stand!

It seems quite a long time since we had a home match, but it's good that we are all back together again.

Today will be different. I'm sure the tributes are more eloquently written elsewhere in this programme and elsewhere, but I join with the Blue Army in remembering our "Auld Pal" Harry today.

Harry was a kind, encouraging and supportive gentleman, a friendly face who welcomed all and will be missed by all who met him.

It will be difficult for many as it is the first home game without him, but we can all shout that little bit louder as he would (but just one "Up The Duzzal!" please).

We welcome another new team to Maiden Castle and a new test in Ipswich Town, but I'm sure Angela Addison will be able to give us some lowdown on what to expect.

They have ground out some good results this season and, as we know, anything could happen in this League.

Angela made her co-commentary debut not so long ago and was great. It was a pleasure to welcome Leyla McFarland to the microphone at Eppleton last time out.

We hope you can join us inside and outside the ground for coverage of today's game, via [www.dhradio.org.uk](http://www.dhradio.org.uk) or the Radioline app.

Thank you to all those who have got in touch recently with their kind feedback.

Enjoy the game!

Let's hear the "Wildcat Roar"!

**John**

@JADMiddy  
@DurhamRoarcast



**VISION for  
EDUCATION**

# ***Kick-start*** a career in education



**Placements  
available in primary,  
secondary and  
SEND schools  
across the  
North East**

Join our **FREE National Teaching Assistant Programme** and earn while you learn the skills to become a Teaching Assistant



**Free online training**



**Paid in-school placement**



**Advice, guidance and dedicated support**



**Potential to secure a long-term or permanent role**



**PLACES ARE LIMITED**

**Scan the QR code to find out more and apply**

THE SUNDAY TIMES  
**Best Places to Work 2024**  
BIG COMPANY

 **REC** | Audited Education

Part of  **The Edwin Group**



# KIDS ZONE

**HEAD INSIDE FOR SOME FUN  
ACTIVITIES FOR BEFORE, DURING  
AND AFTER THE GAME!**

R G M M S H E P P A R D B F H H Y T  
 S S T K I N G T Z X C H K R S A Z S  
 B E Z O N L E L C O R W G H I U P I  
 Z W G U F U H E P P L E A P N G H H  
 W V X H T O L A N D L V S T B J G M  
 J D R B T U C H S P Z T J K S S W S  
 M A J O A A B X C I P C C Y R O I M  
 D S C P B H B G L A M B E R T Z N C  
 F C R L H S M Y J A W Y V S O X Q E  
 F Y Y P U J O Y R G E U S L C H I C  
 M A Y R E J I N W I L S O N Y K I G  
 K A R I F R C O K C K U Q X R F D Q

**SHEPPARD  
 KING  
 AYRE**

**BRIGGS  
 TOLAND  
 WILSON  
 ROBSON**

**HEPPLE  
 LAMBERT  
 WATSON**

CAN YOU FIND ALL THE PLAYERS NAMES?

# WORDSEARCH



**ADD UP THE SHIRT NUMBERS OF THESE PLAYERS AND  
 CALCULATE THE FINAL NUMBER!**

# FOOTBALL MATHS

# BADGE QUIZ



CAN YOU NAME THE CLUB FROM  
THIS SNIPPET OF THEIR BADGE?

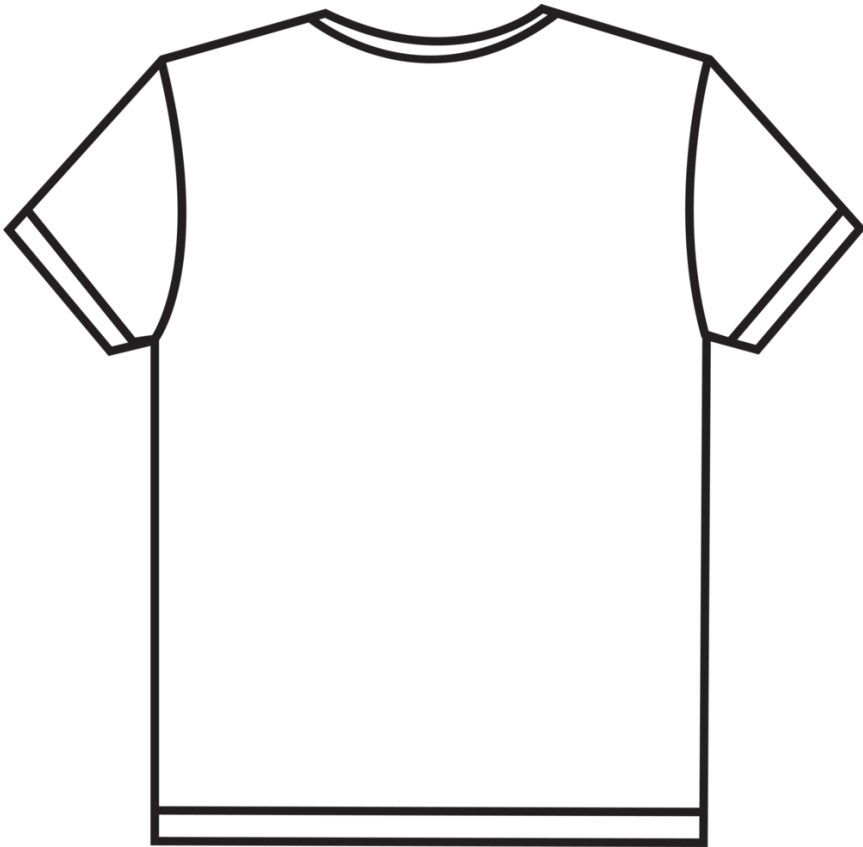
# FOOTBALL BINGO

HOW MANY OF THESE CAN YOU SPOT  
AT TODAY'S GAME?

 <p>DURHAM SCORE A GOAL</p>	 <p>DURHAM</p>	 <p>SPOT OUR MASCOT, CANDY</p>	 <p>THE REFEREE GIVES A CORNER</p>
 <p>DURHAM</p>	 <p>A PLAYER GETS A YELLOW CARD</p>	 <p>THE REFEREE GIVES A GOAL KICK</p>	 <p>A GOALKEEPER MAKES A SAVE</p>
 <p>THE REFEREE GIVES A FREE KICK</p>	 <p>DURHAM HAVE A SHOT</p>	 <p>DURHAM MAKE A SUBSTITUTION</p>	 <p>DURHAM</p>
 <p>DURHAM</p>	 <p>THE REFEREE GIVES A THROW IN</p>	 <p>A GOALKEEPER CATCHES THE BALL</p>	 <p>OFFSIDE!</p>

# DESIGN YOUR OWN SHIRT!

DESIGN YOUR OWN DURHAM WOMEN SHIRT BELOW. SEND IT US ON SOCIAL MEDIA AND YOU COULD WIN TICKETS TO AN UPCOMING HOME GAME!



EITHER TWEET YOUR DESIGN TO @DURHAMWFC OR EMAIL IT TO US ON  
MARK.DONNELLY@DURHAMWFC.CO.UK



# STATS & FACTS

## FIXTURES & RESULTS

DATE	OPPONENT			KO	SCORE
7 SEPT	PORTSMOUTH	A	BWSL2	2PM	W 2-0
14 SEPT	CHARLTON ATHLETIC	H	BWSL2	12PM	L 1-2
19 SEPT	SUNDERLAND	A	BWSL2	7PM	L 1-2
24 SEPT	SHEFFIELD UNITED	H	SWLC	7PM	D 1-1*
28 SEPT	CRYSTAL PALACE	H	BWSL2	12PM	D 1-1
5 OCT	BRISTOL CITY	A	BWSL2	2PM	L 1-2
12 OCT	NOTTINGHAM FOREST	H	BWSL2	12PM	W 3-0
16 OCT	LIVERPOOL	H	SWLC	7PM	L 1-2
2 NOV	SHEFFIELD UNITED	A	BWSL2	1PM	L 1-2
9 NOV	NEWCASTLE UNITED	H	BWSL2	12PM	D 1-1
16 NOV	SOUTHAMPTON	A	BWSL2	12PM	D 1-1
23 NOV	SUNDERLAND	A	SWLC	2PM	D 1-1**
7 DEC	IPSWICH TOWN	H	BWSL2	12PM	
14 DEC	SHEFFIELD UNITED	H	AWFAC3	12PM	
21 DEC	BIRMINGHAM CITY	A	BWSL2	2PM	
11 JAN	SUNDERLAND	H	BWSL2	12PM	
25 JAN	CRYSTAL PALACE	A	BWSL2	12PM	
1 FEB	PORTSMOUTH	H	BWSL2	12PM	
8 FEB	BIRMINGHAM CITY	H	BWSL2	12PM	
15 FEB	CHARLTON ATHLETIC	A	BWSL2	12PM	
15 MAR	IPSWICH TOWN	A	BWSL2	12PM	
22 MAR	SOUTHAMPTON	H	BWSL 2	12PM	
29 MAR	NOTTINGHAM FOREST	A	BWSL2	2PM	
5 APR	BRISTOL CITY	H	BWSL2	12PM	
26 APR	SHEFFIELD UNITED	H	BWSL2	12PM	
TBC	NEWCASTLE UNITED	A	BWSL2	TBC	

\*Sheffield United win on penalties

\*\* Sunderland win on penalties

## TODAY'S GAMES

Durham v Ipswich Town (12pm)

Bristol City v Sheffield United (2pm)

Portsmouth v Charlton Athletic (2pm)

Nottingham Forest v Sunderland (2pm)

Crystal Palace v Birmingham City (2pm)

Newcastle United v Southampton (Monday, 7:30pm)

## LEAGUE TABLE

	TEAM	PLD	PTS	GF	GA	GD
1	CHARLTON ATHLETIC	9	23	12	3	+9
2	BIRMINGHAM CITY	9	19	25	10	+15
3	BRISTOL CITY	9	16	20	14	+6
4	NEWCASTLE UNITED	9	13	17	14	+3
5	NOTTINGHAM FOREST	9	13	12	14	-2
6	SOUTHAMPTON	9	12	20	15	+5
7	SHEFFIELD UNITED	9	12	10	13	-3
8	CRYSTAL PALACE	9	10	14	15	-1
9	DURHAM	9	9	12	11	+1
10	SUNDERLAND	9	9	14	16	-2
11	PORTSMOUTH	9	9	13	24	-11
12	IPSWICH TOWN	9	4	7	27	-20

## PLAYER STATS

PLAYER	STARTS	SUB ON	GOALS	YELLOWS	REDS
GRACE AYRE	10	2		3	
LAUREN BRIGGS	10	1		1	
TYLER TOLAND	9	2		1	
SARAH WILSON	9	2		4	
SARAH ROBSON	3	5		2	
BETH HEPPLER	11	1	7		
MOLLIE LAMBERT	9	2	3	3	
HANNAH BLAKE	6	5			
ABBI GRANT	2				
ANNA KING	3			1	
BECKY SALICKI	4	3		4	
POPPY PRITCHARD	6	5		1	
GRACE EDE	6	1	1		
MARIANA SPECKMAIER	4	2	2		
ANGELA ADDISON					
ELLA WILSON	4				
MICHAELA FOSTER	11		1		
AMBER STOBBS	4				
LEYLA McFARLAND	4	5			
ABBEY JONES	5	4			
CAT SHEPPARD	9				
LUCY WATSON	3	4		1	



# WE WANT YOUR FEEDBACK!

SCAN BELOW AND LET US KNOW WHAT YOU THOUGHT OF YOUR VISIT TODAY!





B2B

## Injection Moulding Ltd

A professional plastic injection moulding service is offered from modern facilities, using state of the art moulding and ancillary equipment.



I need help coming up with a product idea?

If you have a product idea but don't know how to make it then we can assist in taking concepts through the necessary stages to full production.



I need quite a large order, can you handle that?

No job too small or large - Injection moulding from 1g to 200g and for runs as small as 50 to millions.



I'm on a tighter budget, can I still use your services?

We work closely with several UK and Chinese partner companies in order to improve our services for our customers. Working with these partners means we can offer:

- Fully hardened production tooling
- Low-cost tooling for small-volume production
- Rapid prototype tooling
- Advice on cost-effective tooling design.

Find out more information:  
[b2binjectionmoulding.co.uk](http://b2binjectionmoulding.co.uk)



**JOHN  
PARKINSON**



**vh bio** responsive service  
and support

**confrere**  
BUILDING CONTROL



**UNIVERSAL  
MATTER**  
ADVANCED MATERIALS



Trade Recruitments Solutions



**EcoNico**  
LIMITED

**sfawcettelectrical**

**DT POWER  
SOLUTIONS**

**PORTOBELLA  
BOUQUET**

**MAC  
Heating  
Services Ltd**

QUALITY & SERVICE  
**SMH**  
YOU CAN TRUST

**Ryan Hart**  
Estate Agents Ltd  
41 DUKE STREET  
DARLINGTON DL1 3RX  
TEL: 01325 484950

**RSI**  
rownspecialistinteriorsltd

**bw**  
LIFTING LTD

**MP**  
MAGNUM PROPERTIES



**K4**  
KELTIC4

**LFF** LFF GLAMAL

**THE STACKYARD**  
HOLIDAY COTTAGES  
High Dorrington  
016973 42852 07901 556 268  
www.stackyardholidays.co.uk

**P** Pilote  
Cars

**RICHARD  
COULSON**  
CONSULTANCY

**Alburgh**  
NORFOLK  
Luxury  
Ice Cream

**FREEDOM**  
OFFICIAL CLOTHING  
With Members of The Blue Army

**BB**

**ATKINSON  
FAMILY**

**SINCLAIR  
FAMILY**

**TopGear**  
Karting



# CLUB PATHWAY

## ALL THE LATEST NEWS



The recent international break saw two Durham Women FA PGA U21 players represent their countries.

Lillie Coulson (Republic of Ireland) and Yasmin Davies (Wales) both earned call-ups to their respective U19 squads, featuring in UEFA Women's Euro qualifying fixtures.

Well done, Lillie & Yasmin!

Izzy Kilpatrick and Emilia Johnson were also on standby for England U15s



Well done to our Durham Sixth Form Centre Academy team - who have started the season off well.

Pictured here is the side after a fantastic 4-0 win over Burnley!

Durham Cestria claimed victory in their latest FA WNL game - beating Cheadle Town Stingers 1-0 away from home.

Despite being down to ten players for over an hour, Grace Collinson's late strike wrapped up the three points for Michael Third's side.



Want to find out the latest from the Durham Women FC Pathway throughout the season?

Make sure you're following our dedicated Pathway account on X - @DWFCPathway

BARCLAYS  
WSL2



# THE RIVER WEAR DERBY



**DURHAM V SUNDERLAND**

SUNDAY 11 JANUARY 2026 | 12PM KICK-OFF  
MAIDEN CASTLE, DH1 3SE



**SCAN FOR TICKETS**  
FROM JUST £6!

OR VISIT [DURHAMWFC.TICKETCO.EVENTS](https://www.durhamwfc.ticketco.events)



# TEAM NEWS



## DURHAM

13	ANNA KING	● ● ●
35	CAT SHEPPARD	● ● ●
2	GRACE AYRE	● ● ●
3	LAUREN BRIGGS	● ● ●
4	TYLER TOLAND	● ● ●
5	SARAH WILSON	● ● ●
6	SARAH ROBSON	● ● ●
7	BETH HEPPLE	● ● ●
8	MOLLIE LAMBERT	● ● ●
9	LUCY WATSON	● ● ●
10	HANNAH BLAKE	● ● ●
11	ABBI GRANT	● ● ●
14	BECKY SALICKI	● ● ●
15	POPPY PRITCHARD	● ● ●
16	GRACE EDE	● ● ●
17	MARIANA SPECKMAIER	● ● ●
18	ANGELA ADDISON	● ● ●
19	ELLA WILSON	● ● ●
20	MICHAELA FOSTER	● ● ●
21	AMBER STOBBS	● ● ●
25	LEYLA MCFARLAND	● ● ●
27	ABBEY JONES	● ● ●

START  
SUB ON  
GOAL



## IPSWICH

NATALIA NEGRI	1
LAURA HARTLEY	31
MARIA BOSWELL	2
SUMMER HUGHES	3
CHARLOTTE FLEMING	4
SOPHIE BAIGENT	5
LEAH MITCHELL	6
NATASHA THOMAS	7
KYRA ROBERTSON	8
RIANNA DEAN	9
LUCY O'BRIEN	10
SHAUNA GUYATT	11
GRACE NEVILLE	12
RUBY SEABY	14
SOPHIE PESKETT	17
RUBY DOE	18
MADDY EARL	19
MEGAN WEARING	20
BETH ROE	22
PAIGE PEAKE	24
JENNA DEAR	29
KACI-JAI BONWICK	30

START  
SUB ON  
GOAL

REFEREE: ABBY DEARDEN  
ASSISTANT REFEREES: MAGDALENA GOLBA & CHARLOTTE JACQUES-SMITH  
FOURTH OFFICIAL: JODIE HUNTER