

DURHAM

VS NEWCASTLE UNITED



  **OFFICIAL MATCH DAY PROGRAMME | £3**

Plastic Furniture Company

Plastic professionals since 1978.



A-Frame Picnic Table and Bench Set

URBAN FURNITURE & BINS

Shipped Worldwide

Member of Made in Britain

Maintenance Free

Manufactured in the UK

Weather resistant

Full personalisation service available

(design and print)

Recycled range available



Provincial Litter Bin - 39 Litre

SCAN



plasticfurniturecompany.co.uk



WELCOME TO DURHAM WOMEN FC

DURHAM WOMEN FC

DURHAM UNIVERSITY SPORTS PARK, MAIDEN CASTLE, STOCKTON ROAD,
DURHAM, DH1 3SE

BOARD OF DIRECTORS

LEE SANDERS, DAWN HEPPLÉ, PATRICK CONNOLLY, FRANCES CONNOLLY,
FRED GRAINGER, PETER WARBURTON OBE

FIRST TEAM OFFICIALS & STAFF

HEAD OF FOOTBALL

LEE SANDERS

HEAD OF FINANCE

DAWN HEPPLÉ

CHIEF OPERATING OFFICER

MARK DONNELLY

HEAD OF SAFEGUARDING

MARC MCPHILLIPS

FIRST TEAM HEAD COACH

ADAM FURNESS

FIRST TEAM ASSISTANT COACH

GEORGE ANTHONY

PGA U21 HEAD COACH

MARTIN HERDMAN

GOALKEEPING COACH

JON COLLINSON

ANALYST

JACK CAMARDA

PERFORMANCE LEAD

SIMON FAIRBAIRN

STRENGTH & CONDITIONING COACHES

RHIANNA TELFER

CONNOR POWER

LEAD PHYSIOTHERAPIST

NAT GUTTERIDGE

SPORTS THERAPIST

ELEANOR CONNOR

CLUB DOCTOR

DOUGAL SOUTHWARD

NUTRITIONIST

VICTORIA DUKE

MEDIA & MARKETING OFFICER

JANE THWAITES

CONTENT CREATORS

LAURA SMITH

THOMAS WHITTON

RIANNA CURRAN

CLUB PHOTOGRAPHERS

CRAIG MCNAR

WILL CHESHIRE

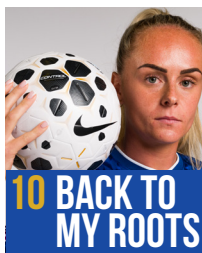
CONTACT EMAIL

INFO@DURHAMWFC.CO.UK

WHAT'S INSIDE?



4 CAPTAIN'S NOTES



10 BACK TO MY ROOTS

13 THE BIG INTERVIEW



27 THE VISITORS

7 LAST TIME OUT

9 LATEST NEWS ROUND-UP

18 MEET THE SQUAD

21 DURHAM WOMEN FC SUPPORTERS CLUB

33 JOHN MIDDLETON COLUMN

45 CLUB PATHWAY ROUND-UP



SARAH
WILSON

BARCLAYS
WSL2

hummel

**VISION
EDUCATION**



GOOD AFTERNOON AND WELCOME TO TODAY'S BARCLAYS WOMEN'S SUPER LEAGUE 2 GAME AGAINST NEWCASTLE UNITED

Wilson on Sheffield United...

"It was a tough afternoon.

"Things just didn't go our way. That's football and that's this league.

"Anything can happen on the day and last Sunday it wasn't our day."

Wilson on today's fixture against Newcastle United...

"We're excited, we know it's a fixture everyone looks forward to now, both players and the fans.

"We're feeling good and ready to get back to work at home at Maiden Castle".

Wilson on what she'd like to see from the team...

"We want to see the same as in previous derby games.

"We want to be able to show the same fight and determination we have done in the past.

"Derby days are always about who wants it more on the day and anything can happen."

Wilson on what makes derby days so special...

"I think it's just exciting, and it's good now that we have a couple of derby games throughout the season.

"It gives the fans something to look forward too.

"They always draw up big crowds and it's great to see so many



THE NOISE SEEMS TO BE GETTING LOUDER AND WE NEED IT TO KEEP COMING. IT GIVES US THAT EXTRA PUSH WHEN WE NEED IT MOST

women's football fans get behind their team."

Wilson on the Blue Army...

"Thank you for the support so far this season, both home and away.

"We appreciate it and feel it. The noise seems to be getting louder and we need it to keep coming, it gives us that extra push when we need it most."

Sarah Wilson

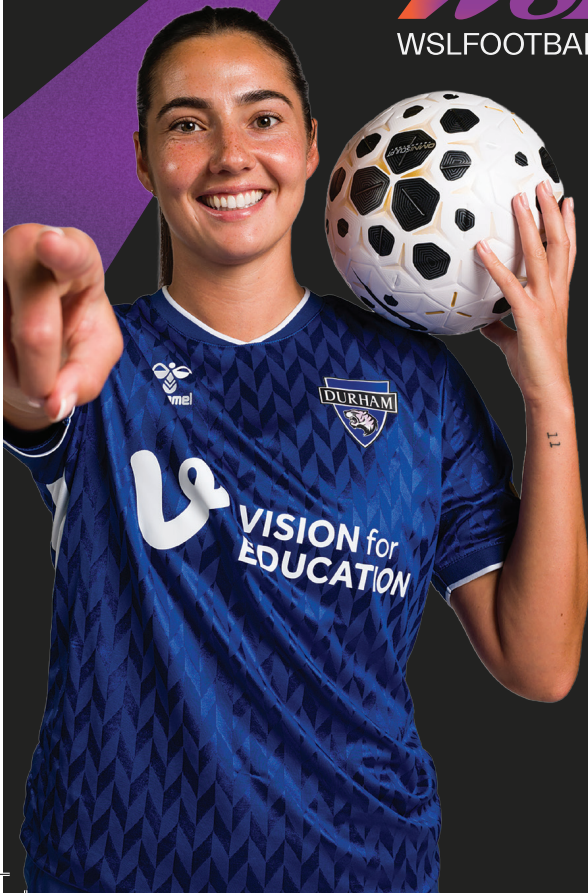
WATCH THIS

Live every week on YouTube.

 BARCLAYS

*W*SL2

WSLFOOTBALL.COM





LAST TIME OUT

SHEFFIELD UNITED 2-1 DURHAM

Starting on the back foot for the opening 15, as Durham looked to figure out United's game plan, it was the visitors that came closest to opening the scoring early on. Firing a venomous effort from 25 yards, Tyler Toland, fresh back from international duties, demanded an excellent save from the opposition's goalkeeper to maintain the deadlock.

Following a further ten minutes of pressure from the hosts, Durham found their next big chance of opening the scoring. Driving forwards from her own half, Abbey Jones' deflected, long ranged effort seemed to wrong-foot United's Sian Rogers, though the effort was palmed away to safety.

Heading towards the break, it seemed increasingly likely that a goal was on the way, with either side aggressively pushing for the opener, though captain fantastic Sarah Wilson seemed very opposed to Sheffield United being the side to do so.

Left one on one with Catriona Sheppard following a rapid counter-attacking play, Wilson raced back with power, timing an outstanding sliding tackle to steal the ball away from the feet of United striker Any Andrews just milliseconds before she could pull the trigger.

Unfortunately, this tackle was in vein.

With a looped ball in following an initially cleared corner routine, the second ball was met by an unmarked Sheffield United attacker. Last defender Lauren Briggs was left to a desperate last-ditch goal-line clearance attempt, though the ball found its way into the net regardless for the hosts' opener.

Directly after the half time break, Durham's fortunes would only worsen. Conceding an unfortunate penalty in the 48th minute, the Sheffield number 10 Devlin converted to double the deficit.

It seemed the afternoon worsened even further soon later, though the hosts, having thought they had netted a third, were left disappointed by the offside flag.










Late on, Durham were handed a lifeline. Conceding a poor penalty in the 77th minute, a dire challenge from Jess Reavill saw Lucy Watson felled in the box, and the WSL 2's top goalscorer Beth Hepple had no trouble converting to keep Durham's hopes alive.

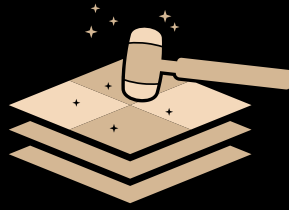
Despite Durham's late dominance, Sheffield United's defence stood firm, shutting out the remaining attacks, with Mollie Lambert heading wide in the dying seconds to seal the afternoon off.

STARTING LINE-UP

- 35 CAT SHEPPARD
- 2 GRACE AYRE
- 3 LAUREN BRIGGS
- 4 TYLER TOLAND
- 5 SARAH WILSON
- 7 BETH HEPPLE
- 8 MOLLIE LAMBERT
- 14 BECKY SALICKI
- 15 POPPY PRITCHARD
- 16 GRACE EDE
- 27 ABBEY JONES

KEY MOMENTS

-  **43' GOAL SHEFFIELD UNITED**
Mollie Rouse
-  **47' YELLOW CARD**
Sarah Wilson (Durham)
-  **47' YELLOW CARD**
Becky Salicki (Durham)
-  **48' GOAL SHEFFIELD UNITED**
Charlie Devlin
-  **64' YELLOW CARD**
Charlie Devlin (Sheffield United)
-  **69' YELLOW CARD**
Mollie Rouse (Sheffield United)
-  **77' GOAL DURHAM**
Beth Hepple
-  **78' YELLOW CARD**
Grace Ayre (Durham)
-  **78' YELLOW CARD**
Sophie O'Rourke (Sheffield United)



ELITE PAVING & LANDSCAPING

0 7 7 1 4 8 5 6 6 7 5



pace
health club

**CALLING ALL
DURHAM STUDENTS!**

Student Memberships Available

GYM
SAUNA
STEAM ROOM
HEATED SWIMMING
POOL
JACUZZI
TREATMENT ROOMS

JOIN TODAY!





LATEST NEWS

WSL2 NEWS ROUND-UP



WSL Football and Apple are collaborating to transform the way the game is played, coached, officiated and experienced, supporting WSL Football's vision to create the most distinctive, competitive and entertaining club competition in the world.

Barclays Women's Super League and Barclays Women's Super League 2 clubs and officials will benefit by embracing Apple products. The game-changing move will help players, coaches and analysts to drive better performance standards and ultimately elevate the game.



WSL2 players are now eligible to join the PFA for the first time.

They can gain access and support from the union across a range of issues relating to their contracts, rights and conditions. They will also qualify for the services and benefits provided by the PFA.

Durham Women are proud to announce a new commercial partnership with Specsavers.

The Blues have teamed-up with the Durham branches of the opticians and audiologists for the remainder of the 2025/26 season to help champion eye health in sport.



FOOTBALL MANAGER

Football Manager 2026 is out now - and you can play as Durham Women!

The latest edition of the popular franchise sees the Barclays Women's Super League available to play for the first time!



MY FIRST TEAM...

Ashbrooke Angels. I think I was around seven and it was a newly formed team when girls football was just starting really, I joined as I loved it!

MY EARLIEST FOOTBALL MEMORY...

I remember my dad taking me out in the street when I was really young and just having a kick around to burn some energy!

MY FIRST FOOTBALL HERO...

My first hero was definitely Thierry Henry, he really made me fall in love with football as a kid, I'll always remember the 'va va voom' advert!

MY ADVICE TO THE NEXT GENERATION...

Just enjoy it, that's the most important thing. There's so many endless opportunities now so grab it with both hands!

BACK TO MY ROOTS

WITH BETH HEPPLE





The PFC Trust was set up in 2019 by a small group of like minded individuals who wanted to make a difference. Since then we have awarded over 1.2m in grants / donations to local causes. It is our mission to create positive change in our community.

We work with a range of partners to ensure that individuals and organisations are best placed to reach their goals.

This support is different for everyone we work with, but it can include capacity building support, funding and training opportunities.

**WE BELIEVE WE HAVE
CHANGED LIVES AND
THE LIFE CHANCES
OF MANY
AND NOW YOU CAN HELP
US, CHANGE LIVES TOO.**



Volunteer



Donate



**Become a
Patron**



For more information about The PFC Trust, Becoming Involved or How we may be able to help you. **Get in Touch!**

www.thepfctrust.org
pfc.trust@outlook.com

[/thePFctrust](https://www.facebook.com/thePFctrust)
[@/thepfctrust](https://www.instagram.com/thepfctrust)



THE BIG INTERVIEW

BECKY SALICKI

WE SIT DOWN FOR A CTAHC-UP WITH SALICKI...



We caught up with Becky Salicki ahead of today's North East Derby Day fixture to chat about the fixture.

The defender has been at the club since 2016, clocking up over 200 appearances for the Blues.

In June, she signed a new contract cementing her extended commitment with the club.

And in a sit-down interview with Jane Thwaites, the defender looked ahead to today's Derby Day clash with Newcastle United...

Salicki on today's Derby Day clash...

"It's a big derby for us, one that in previous fixtures we've done very well in.

"But we're not naive to the fact of how good of a squad they have.

"They've obviously brought in some top-quality players over the summer as well, so no doubt it will be a good game.

"For us, it is just another match that we need to lock down our game plan for and make sure we deliver on the day."

Salicki on what makes today's fixture so special...

"Obviously it's a derby and we've had some big battles with Newcastle in the past.

"The fans make it special for us.

"We see them in the hundreds regardless of who we are playing against.

"We really appreciate them and we're going to need them especially for this game."

Salicki on what she'd like to see from the team today...

"I'd like to see a bit more of the same that we saw last season against Newcastle.



“Particularly with derby games, it takes a lot of grit, determination and teamwork, we need to keep ourselves together and fight for each other and I think that’s really important.

“I remember when we played the home game last season, there was a period where you could see the first tackle going in and we were cheering it like a goal, you could see us winning a throw and we were cheering it like a goal.

“I think they are the little things that we can’t take away from ourselves and we need to keep that.

“The little things are really important and so long as everyone buys into that on the day, we should be fine.”

Salicki on today’s preparation...

“We prepare in every moment that we possibly can.

“We go into every possible little detail as thoroughly as we can, with the coaches and as a team.

“It is the small margins that are defining games in this league and hopefully we can be on the right side of that.”

Salicki on today’s preparation...

“I feel pride more than anything.

“It’s something I never thought I would get to do.

“I had a bad spell of injuries in my younger life, and so to pull on the shirt



I’LL TAKE EVERY SINGLE OPPORTUNITY I CAN WITH BOTH HANDS AND GIVE MY BEST FOR THE BADGE ALWAYS



every single time I can to help the team and club in any way possible is an immense proud moment for myself.

“I count myself lucky every time I do get the chance because I know it’s not going to be forever.

“I’ll take every single opportunity I can with both hands and give my best for the badge, always.”

Becky Salicki is sponsored by Key Inns and Bamba

mkm.com

FREE
LOCAL
DELIVERY



Visit us in branch to
explore our wide range of
**BUILDING, TIMBER,
PLUMBING, HEATING,
BATHROOM,
& LANDSCAPING
SUPPLIES**

Scan here

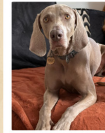






Renny's Lane Durham
DH1 2RW 0191 374 2070

MKM





Adventure Pups Home Boarding

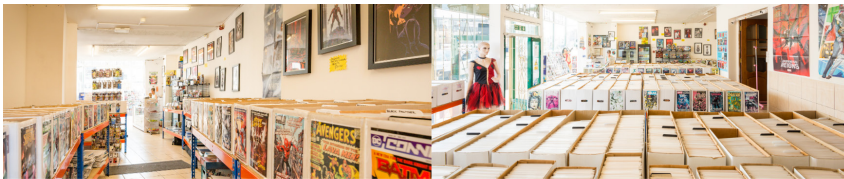


-  Fully Insured, DBS Checked,
Trained in Animal first aid
-  Home away from home experience.
NO CRATES OR KENNELS
-  Regular photo and video updates
-  Licensed with local council: SCC/243



 @AdventurePupsNE

 07504808509



THE DARL KNIGHT

35 BONDGATE, DARLINGTON DL3 7JJ
COMICS, MANGA, CARDS, SUPPLIES



MEET THE SQUAD



2

GRACE AYRE

DEFENDER

SPONSORED BY:
JAMES BURTONSHAW



3

LAUREN BRIGGS

DEFENDER

SPONSORED BY:
ALAN WHITE



4

TYLER TOLAND

MIDFIELDER

AVAILABLE TO SPONSOR



5

SARAH WILSON

DEFENDER

SPONSORED BY:
PJM



6

SARAH ROBSON

DEFENDER

SPONSORED BY:
NEIL THORNTON



7

BETH HEPPLE

MIDFIELDER

SPONSORED BY:
ADVENTURE PUPS & DARRIN'S SUPER ICES



8

MOLLIE LAMBERT

MIDFIELDER

SPONSORED BY:
THE DARL KNIGHT



9

LUCY WATSON

FORWARD

AVAILABLE TO SPONSOR



10

HANNAH BLAKE

FORWARD

AVAILABLE TO SPONSOR



11

ABBI GRANT

FORWARD

AVAILABLE TO SPONSOR



13

ANNA KING

GOALKEEPER

SPONSORED BY:
LEXI BARTLETT



14

BECKY SALICKI

DEFENDER

SPONSORED BY:
BAMBRA & KEY INNS

MEET THE SQUAD



16

GRACE EDE
FORWARD

SPONSORED BY:
SIGNATURE CONSTRUCTION LTD



17

MARIANA SPECKMAIER
FORWARD

AVAILABLE TO SPONSOR



18

ANGELA ADDISON
FORWARD

AVAILABLE TO SPONSOR



19

ELLA WILSON
DEFENDER

AVAILABLE TO SPONSOR



20

MICHAELA FOSTER
DEFENDER

AVAILABLE TO SPONSOR



21

AMBER STOBBS
MIDFIELDER

SPONSORED BY:
ELITE PAVING & LANDSCAPING



25

LEYLA MCFARLAND
FORWARD

AVAILABLE TO SPONSOR



27

ABBEY JONES
FORWARD

AVAILABLE TO SPONSOR



35

CAT SHEPPARD
GOALKEEPER

SPONSORED BY:
THE WEIGH TO SHOP



15

POPPY PRITCHARD
FORWARD

AVAILABLE TO SPONSOR

SPONSOR A PLAYER

Want to show your support for your favourite player while gaining excellent exposure?

Sponsor a player for just £500+VAT!

Email mark.donnelly@durhamwfc.co.uk
for more details!



DURHAM'S ZERO WASTE SHOP
 29C Front Street, Framwellgate Moor, DH15EE
 Tel: 07340671326
 Tues - Fri 10.00 - 18.00 Sat 10.00 - 16.00
REFILLS PLASTIC FREE ALTERNATIVES CAFE

THE WEIGH TO SHOP
 DRIED FOODS
 SPICES
 COFFEE
 HOUSEHOLD LIQUIDS
 GIFTS
 HOT DRINKS
 CEREALS
 DRIED FRUIT
 WORKSHOPS

BRING YOUR CONTAINERS

 theweightshop@outlook.com
 FACEBOOK AND INSTAGRAM
 @THEWEIGHTSHOP



Reduce
 Reuse
 Recycle



THE WEIGH TO SHOP
 29C Front Street,
 Framwellgate Moor,
 DH15EE
 Tel: 07340671326
 Tues - Fri 10.00 - 18.00
 Sat 10.00 - 16.00



BRING YOUR OWN CONTAINERS





SUPPORTERS CLUB

FROM THE BLUE ARMY

Welcome from the DWSC!

So after a few games of not getting the points our efforts deserved, what seemed like a really long break, and a very rare off-day we welcome one of our local rivals to what is an important game for both sides as both teams look to climb the table.

Neither team have had the start to the season that they wanted and hopefully a win today will kick-start the winning run we have been looking for.

This season there are no easy games as all teams look to take the best opportunity at promotion there has been from the second tier for quite a while.

Within the DWSC are always looking to increase our membership.

All funds are re-invested into supporting the first team and development teams as well as enhancing the fan's matchday experience.

Today the DWSC have provided the wreaths for both teams on our allocated remembrance day match.

If you have already paid for your membership dont forget to come and collect your membership pack on a match day.

If you havent yet signed up, you can also do this on a matchday, come and see us, for your fee you will get a membership card, pin badge, legends poster, discounted entry to Durham Cestria games, personally signed birthday card from your favourite player, as well as exclusive member events and perks.

We also have exclusive keyrings and badges for those attending their first Durham game anytime during this season, come and see us. If it is your birthday in November come and collect your birthday card signed by your favourite player.

Enjoy the match.

Happy Birthday to our DWSC members who celebrate theirs in November:

**Paula Fallon-Jones
Ange Goodings
Lee Dolby**



Proud HR Partner of DWFC

Bespoke HR services that wrap around your business



Supporting businesses through pivotal change

Find out more at shrewd-hr.co.uk



Fast, effective, and affordable support



Everything your business needs





Inn Hospitality Group

Local inns with fine hospitality at their core

PUB | ROOMS | FOOD



BOOK A TABLE | BOOK A ROOM





4

TYLER TOLAND

Book your eye test

online or in store today



Book an appointment at [specsavers.co.uk](https://www.specsavers.co.uk)

Arnison Arnison Retail Park Tel 0191 814 2020
Durham 1-4 North Road Tel 0191 383 9495

Specsavers



THE NEWCASTLE UNITED VISITORS





THE INTERIM HEAD COACH



CLAIRE DITCHBURN

Following the departure of Becky Langleigh, Claire Ditchburn is leading the team on an interim basis.

She will be assisted by former Magpies defender, and current Assistant Loan Player Manager, Peter Ramage.

THE SKIPPER



DEMI STOKES

Capped 69 times by England, Demi Stokes joined Newcastle in 2024 following the expiration of her contract at Manchester City Women.

The defender helped City to lift the Women's Super League title in 2016 along with three Women's FA Cups.



NEWCASTLE UNITED

NORTH EAST NEIGHBOURS MAKE THE VISIT TO MAIDEN CASTLE OFF THE BACK OF A BIG WIN LAST TIME OUT AND WITH PROMOTION AMBITIONS STILL ALIVE...

LAST TIME OUT



Newcastle United picked up three points as they beat Ipswich Town 4-1 away from home last weekend.

The deadlock was broken in the 40th minute as Shania Hayles scored with the deftest of touches from a cross.

Hayles got her second of the game just five minutes into the second half from close range.

Kyra Robertson got one back just minutes later after the ball was deemed to have crossed the line following a free-kick.

Molly Pike made it three for Newcastle on the hour mark with a well-struck volley into the far corner.

Emily Murphy wrapped up the points just minutes before the end with a header at the back post.

It extends Newcastle's unbeaten run to four games in all competitions.

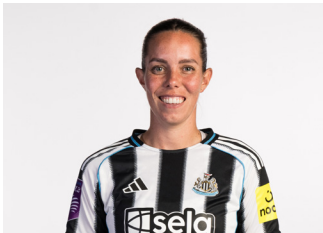
NEWCASTLE SQUAD



CLAUDIA MOAN

GOALKEEPERS

Anna Tamminen
Claudia Moan
Femke Liefting
Hannah Hawkins



DEANNA COOPER

DEFENDERS

Lia Cataldo
Jorja Fox
Aoife Mannion
Charlotte Potts
Malgorzata Grec
Charlotte Wardlaw
Demi Stokes
Jemma Purfield
Deanna Cooper



EMMA KELLY

MIDFIELDERS

Lois Joel
Jordan Nobbs
Elysia Boddy
Morgan Gautrat
Jasmine McQuade
Emma Kelly
Molly Pike

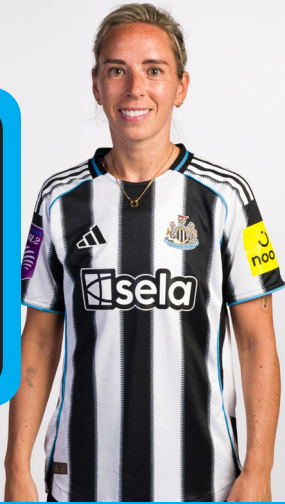


EMILY MURPHY

FORWARDS

Freya Gregory
Shania Hayles
Beth Lumsden
Oona Sevenius
Emily Murphy

ONE TO WATCH



Jordan Nobbs joined the Magpies in the summer following her departure from Aston Villa.

The English international spent the previous 15 years with Arsenal and Villa in the Barclays Women's Super League, picking up 208 appearances in total.

Her career started at Sunderland, leaving for Arsenal in 2010.

In her 12 years with the Gunners, she made 270 appearances, scoring 81 goals and winning 12 domestic trophies in North London.

ONE TO WATCH



Republic of Ireland international **Aoife Mannion** arrived on Tyneside in the summer from Manchester United Women following a four-year spell with the Reds where she won the first major trophy of her career, coming on as a substitute in a 4-0 win against Tottenham Hotspur in the 2024 Women's FA Cup final.

Mannion spent six years at Birmingham City prior to her north-west switch, appearing 94 times for the Blues as they reached the UEFA Champions League semi-finals in 2014 whilst finishing as runners-up in the Women's League Cup in 2016, and the FA Cup in 2017.

Beginning her career with Aston Villa, she spent two years at Manchester City between 2019 and 2021 and has 16 Republic of Ireland caps to her name after making her debut in 2023 against China.

PLAYED FOR BOTH



There are countless players who have played for both Durham and Newcastle United - which is unsurprising given the geographic closeness of the two sides.

In the current Durham ranks, Sarah Wilson, Mollie Lambert, Poppy Pritchard, Ella Wilson and Amber Stobbs have all represented the Magpies.

And in the other camp, both Hannah Hawkins and Jemma Purfield have turned out in Blue.

Other notable names to have played for both teams include Hannah Greenwood, Rachel Lee and Amy Andrews.



SIGNATURE CONSTRUCTION LTD



JOHN MIDDLETON

DURHAM HOSPITALS RADIO

Greetings from the Back of The Stand!

After last week's disappointing result, there's nothing like a local derby to follow it! Last seasons games between the two sides were great, so we're in for a treat this afternoon!

"Who doesn't like a derby?" is a very good question. They are always enjoyable matches for many reasons but I suppose you only "like" them when you win. Both sets of supporters getting behind their team from before kick-off, roaring them on throughout the game and then all going home afterwards in similar directions. The nerves, excitement, joy and sorrow is like a microcosm for a football season in itself.

Anything can happen and probably will! Sometimes form goes out the window and runs begins, depending on what happens in these games. You have to take your hats off to the Coaching Staff who prepare meticulously for this (and every) game with the added pressure of the so-called "bragging rights" which ride on the one match. These are the ones that are remembered for the longest time for whatever reason.

Of course, I could be reading all of this wrong - maybe I'm projecting my own nerves onto the situation? For the first fixtures I looked up when they were announced were the

derbies! I suppose I look forward to them, half enjoy them when they get here and then worry about the outcome. With the League Cup, we get another one in a couple of weeks too!

They are events to capture the imagination of the public outside the ground, to distract from everything that is going on and to bring people together; at least on to two sides but after the match we'll all be friends again. Thankfully we don't have the fierceness or stupidity that mares other, mostly male, derbies off the pitch.

We welcome back some old friends today and wish them well for the rest of the season, after the match. I'm sure today's game will live up to the hype of a derby!

I hope you can join us inside and outside the ground for live commentary via www.dhradio.org.uk or the Radioline App - it is nice to hear that more and more are listening inside the ground now. Thanks for your kind feedback too!

Enjoy the game!

John

@JADMiddy
@DurhamRoarcast



**VISION for
EDUCATION**

Kick-start a career in education



**Placements
available in primary,
secondary and
SEND schools
across the
North East**

Join our **FREE National Teaching Assistant Programme** and earn while you learn the skills to become a Teaching Assistant



**Free online
training**



**Paid
in-school
placement**



**Advice,
guidance and
dedicated
support**



**Potential
to secure a
long-term
or permanent
role**



PLACES ARE LIMITED

Scan the QR code to find out more and apply

THE SUNDAY TIMES
**Best Places
to Work 2024**
BIG COMPANY

 **REC** | Audited
Education

Part of  **The Edwin Group**



KIDS ZONE

**HEAD INSIDE FOR SOME FUN
ACTIVITIES FOR BEFORE, DURING
AND AFTER THE GAME!**

B G F U F V P F A Z D A J S D I U P
 C R Y S T A L P A L A C E O D P L O
 S I B T Y A B O K V Q B S U O S Z R
 U M O K W B R I S T O L T T O W T T
 S U N D E R L A N D Y X Q H Z I S S
 J N E W C A S T L E U Y J A B C F M
 S H E F F I E L D U R H A M T H U O
 J N T S A I M J E W U Q X P K T L U
 M N O T T I N G H A M R E T P O Y T
 E O C H A R L T O N U O R O P W H H
 V I J U G L V W T K N B P N G N Z T
 F H V E B I R M I N G H A M K D Q Z

BIRMINGHAM
BRISTOL
CHARLTON
CRYSTAL PALACE

DURHAM
IPSWICH
NEWCASTLE
NOTTINGHAM

PORTSMOUTH
SHEFFIELD
SOUTHAMPTON
SUNDERLAND

CAN YOU FIND ALL THE PLAYERS NAMES?

WORDSEARCH



ADD UP THE SHIRT NUMBERS OF THESE PLAYERS AND CALCULATE THE FINAL NUMBER!

FOOTBALL MATHS

BADGE QUIZ



CAN YOU NAME THE CLUB FROM
THIS SNIPPET OF THEIR BADGE?

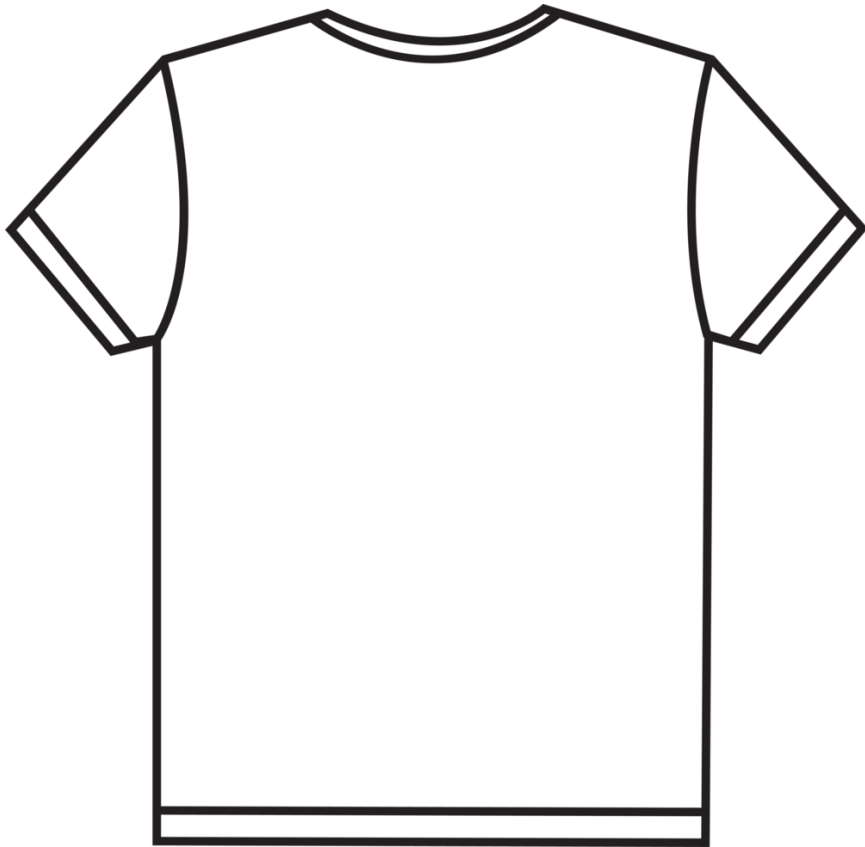
FOOTBALL BINGO

HOW MANY OF THESE CAN YOU SPOT
AT TODAY'S GAME?

 <p>DURHAM SCORE A GOAL</p>	 <p>DURHAM</p>	 <p>SPOT OUR MASCOT, CANDY</p>	 <p>THE REFEREE GIVES A CORNER</p>
 <p>DURHAM</p>	 <p>A PLAYER GETS A YELLOW CARD</p>	 <p>THE REFEREE GIVES A GOAL KICK</p>	 <p>A GOALKEEPER MAKES A SAVE</p>
 <p>THE REFEREE GIVES A FREE KICK</p>	 <p>DURHAM HAVE A SHOT</p>	 <p>DURHAM MAKE A SUBSTITUTION</p>	 <p>DURHAM</p>
 <p>DURHAM</p>	 <p>THE REFEREE GIVES A THROW IN</p>	 <p>A GOALKEEPER CATCHES THE BALL</p>	 <p>OFFSIDE!</p>

DESIGN YOUR OWN SHIRT!

DESIGN YOUR OWN DURHAM WOMEN SHIRT BELOW. SEND IT US ON SOCIAL MEDIA AND YOU COULD WIN TICKETS TO AN UPCOMING HOME GAME!



EITHER TWEET YOUR DESIGN TO @DURHAMWFC OR EMAIL IT TO US ON
MARK.DONNELLY@DURHAMWFC.CO.UK

WRITE A REPORT!

USE THE SPACES BELOW TO WRITE A MATCH REPORT FROM TODAY'S BIG GAME!



DURHAM TEAM

DESCRIBE THE ACTION AND THE BIG MOMENTS IN THE MATCH BELOW...

MY PLAYER OF THE MATCH FROM TODAY'S GAME IS...

ANSWERS

Football Maths: Blake (10) + Toland (4) + Grant (11) = 25
Badge Quiz: Southampton

STATS & FACTS

FIXTURES & RESULTS

DATE	OPPONENT			KO	SCORE
7 SEPT	PORTSMOUTH	A	BWSL2	2PM	W 2-0
14 SEPT	CHARLTON ATHLETIC	H	BWSL2	12PM	L 1-2
19 SEPT	SUNDERLAND	A	BWSL2	7PM	L 1-2
24 SEPT	SHEFFIELD UNITED	H	SWLC	7PM	D 1-1*
28 SEPT	CRYSTAL PALACE	H	BWSL2	12PM	D 1-1
5 OCT	BRISTOL CITY	A	BWSL2	2PM	L 1-2
12 OCT	NOTTINGHAM FOREST	H	BWSL2	12PM	W 3-0
16 OCT	LIVERPOOL	H	SWLC	7PM	L 1-2
2 NOV	SHEFFIELD UNITED	A	BWSL2	1PM	L 1-2
9 NOV	NEWCASTLE UNITED	H	BWSL2	12PM	
16 NOV	SOUTHAMPTON	A	BWSL2	12PM	
23 NOV	SUNDERLAND	A	SWLC	2PM	
7 DEC	IPSWICH TOWN	H	BWSL2	12PM	
14 DEC	FA CUP THIRD ROUND				
21 DEC	BIRMINGHAM CITY	A	BWSL2	2PM	
11 JAN	SUNDERLAND	H	BWSL2	12PM	
25 JAN	CRYSTAL PALACE	A	BWSL2	12PM	
1 FEB	PORTSMOUTH	H	BWSL2	12PM	
8 FEB	BIRMINGHAM CITY	H	BWSL2	12PM	
15 FEB	CHARLTON ATHLETIC	A	BWSL2	12PM	
15 MAR	IPSWICH TOWN	A	BWSL2	12PM	
22 MAR	SOUTHAMPTON	H	BWSL 2	12PM	
29 MAR	NOTTINGHAM FOREST	A	BWSL2	2PM	
5 APR	BRISTOL CITY	H	BWSL2	12PM	
26 APR	SHEFFIELD UNITED	H	BWSL2	12PM	
TBC	NEWCASTLE UNITED	A	BWSL2	TBC	

TODAY'S GAMES

Durham v Newcastle United (12pm)
Charlton Athletic v Southampton (2pm)
Sunderland v Portsmouth (2pm)
Bristol City v Ipswich Town (2pm)
Crystal Palace v Sheffield United (2pm)
Nottingham Forest v Birmingham City (Monday, 7pm)

LEAGUE TABLE

	TEAM	PLD	PTS	GF	GA	GD
1	CHARLTON ATHLETIC	7	17	8	2	+6
2	BIRMINGHAM CITY	7	13	17	8	+9
3	BRISTOL CITY	7	13	13	12	+1
4	NOTTINGHAM FOREST	7	12	12	11	+1
5	SOUTHAMPTON	7	11	18	12	+6
6	NEWCASTLE UNITED	7	9	13	12	+1
7	SUNDERLAND	7	9	11	10	+1
8	SHEFFIELD UNITED	7	8	8	12	-4
9	DURHAM	7	7	10	9	+1
10	CRYSTAL PALACE	7	7	11	12	-1
11	PORTSMOUTH	7	6	8	17	-9
12	IPSWICH TOWN	7	4	6	18	-12

PLAYER STATS

PLAYER	STARTS	SUB ON	GOALS	YELLOWS	REDS
GRACE AYRE	7	2		2	
LAUREN BRIGGS	8			1	
TYLER TOLAND	7	1		1	
SARAH WILSON	7	1		4	
SARAH ROBSON	2	4		1	
BETH HEPPLER	8	1	5		
MOLLIE LAMBERT	7	2	2	3	
HANNAH BLAKE	4	5			
ABBI GRANT	1				
ANNA KING	2			1	
BECKY SALICKI	4	3		4	
POPPY PRITCHARD	5	4		1	
GRACE EDE	5	1	1		
MARIANA SPECKMAIER	3	1	2		
ANGELA ADDISON					
ELLA WILSON	3				
MICHAELA FOSTER	8		1		
AMBER STOBBS	4				
LEYLA McFARLAND	4	5			
ABBEY JONES	4	3			
CAT SHEPPARD	7				
LUCY WATSON	2	3		1	



WE WANT YOUR FEEDBACK!

SCAN BELOW AND LET US KNOW WHAT YOU THOUGHT OF YOUR VISIT TODAY!





B2B

Injection Moulding Ltd

A professional plastic injection moulding service is offered from modern facilities, using state of the art moulding and ancillary equipment.



I need help coming up with a product idea?

If you have a product idea but don't know how to make it then we can assist in taking concepts through the necessary stages to full production.



I need quite a large order, can you handle that?

No job too small or large - Injection moulding from 1g to 200g and for runs as small as 50 to millions.



I'm on a tighter budget, can I still use your services?

We work closely with several UK and Chinese partner companies in order to improve our services for our customers. Working with these partners means we can offer:

- Fully hardened production tooling
- Low-cost tooling for small-volume production
- Rapid prototype tooling
- Advice on cost-effective tooling design.

Find out more information:
b2binjectionmoulding.co.uk



**JOHN
PARKINSON**



vh bio responsive service
and support

confrere
BUILDING CONTROL



**UNIVERSAL
MATTER**
ADVANCED MATERIALS



Trade Recruitments Solutions



EcoNico
LIMITED

sfawcettelectrical

**DT POWER
SOLUTIONS**

**PORTOBELLA
BOULIQUE**

**MAC
Heating
Services Ltd**

QUALITY & SERVICE
SMH
YOU CAN TRUST

Ryan Hart
Estate Agents Ltd
41 DUKE STREET
DARLINGTON DL1 3RX
TEL: 01325 484950

R S I
rownspecialistinteriorsltd

bw
LIFTING LTD

MP
MAGNUM PROPERTIES



K4
KELTIC4

LFF LFF GLAMAL

THE STACKYARD
HOLIDAY COTTAGES
High Dorrington
016973 42532 07901 556 268
www.stackyardholidays.co.uk

P Pilote
Cars

**RICHARD
COULSON**
CONSULTANCY

Alburgh
NORFOLK
Luxury
Ice Cream

FREEDOM
OFFICIAL CLOTHING
With Members of The Blue Army

BB

**ATKINSON
FAMILY**

**SINCLAIR
FAMILY**

TopGear
Karting



CLUB PATHWAY

ALL THE LATEST NEWS



Our U10s and U12s had a brilliant weekend down South. At Oxford they took part in touch rugby and a range of matches.

Both our U10s and our U12s were victors against Chelsea in friendly fixtures - with the latter side running out 16-1 winners!

Fantastic experiences and memories both on and off the field for our young players.



Congratulations to our young players who have recently been on international duty:

Macy Bangura (England U16s)
Lillie Coulson (Ireland U19s)
Yasmin Davies (Wales U19s)

We also have Isobel Kilpatrick and Emilia Johnson on standby for England U15s!

Durham Cestria are into the second round of the Adobe Women's FA Cup!

Having beaten Accrington Stanley and Dronfield Town, Cestria now face Mancunian Unity away from home in the Second Round Proper.



Our ETC players have had a busy week, taking part in a futsal festival with a range of ETCs from across the North. They also took part in the Durham FA festival.

Make sure you follow us on X - @DWFCPathway - as we regularly post updates about the next generation at the club!



UP NEXT

AT MAIDEN CASTLE



SUNDAY 7 DECEMBER | 12PM KICK-OFF

SCAN HERE
FOR TICKETS

OR VISIT DURHAMWFC.TICKETCO.EVENTS



TEAM NEWS



DURHAM

NEWCASTLE

13	ANNA KING	● ● ●	● ● ●
35	CAT SHEPPARD	● ● ●	● ● ●
2	GRACE AYRE	● ● ●	● ● ●
3	LAUREN BRIGGS	● ● ●	● ● ●
4	TYLER TOLAND	● ● ●	● ● ●
5	SARAH WILSON	● ● ●	● ● ●
6	SARAH ROBSON	● ● ●	● ● ●
7	BETH HEPPLE	● ● ●	● ● ●
8	MOLLIE LAMBERT	● ● ●	● ● ●
9	LUCY WATSON	● ● ●	● ● ●
10	HANNAH BLAKE	● ● ●	● ● ●
11	ABBI GRANT	● ● ●	● ● ●
14	BECKY SALICKI	● ● ●	● ● ●
15	POPPY PRITCHARD	● ● ●	● ● ●
16	GRACE EDE	● ● ●	● ● ●
17	MARIANA SPECKMAIER	● ● ●	● ● ●
18	ANGELA ADDISON	● ● ●	● ● ●
19	ELLA WILSON	● ● ●	● ● ●
20	MICHAELA FOSTER	● ● ●	● ● ●
21	AMBER STOBBS	● ● ●	● ● ●
25	LEYLA MCFARLAND	● ● ●	● ● ●
27	ABBEY JONES	● ● ●	● ● ●

START
SUB ON
GOAL

START
SUB ON
GOAL

ANNA TAMMINEN	1
CLAUDIA MOAN	13
FEMKE LIEFTING	16
HANNAH HAWKINS	27
CHARLOTTE WARDLAW	2
DEMI STOKES	3
JORDAN NOBBS	4
JEMMA PURFIELD	5
ELYSIA BODDY	6
MORGAN GAUTRAT	7
EMMA KELLY	8
SHANIA HAYLES	9
MOLLY PIKE	10
FREYA GREGORY	11
DEANNA COOPER	12
MALGORZATA GREC	15
OONA SEVENIUS	20
JASMINE MCQUADE	21
LOIS JOEL	22
CHARLOTTE POTTS	23
AOIFE MANNION	25
BETH LUMSDEN	26
JORJA FOX	29
EMILY MURPHY	35
LIA CATALDO	99

REFEREE: MEGAN WILSON

ASSISTANT REFEREES: JOSHUA BRAYSHAW & FIYINFOLUWA ALADELUSI

FOURTH OFFICIAL: MATTHEW SOWERBY

Programme Printed By We Are Reds

Editors & Designers: Jane Thwaites & Mark Donnelly | Contributors: Jane Thwaites, Mark Donnelly John Middleton, Lee Dolby, Newcastle United
All information is correct up until Tuesday November 4th, which is when this programme was sent to print.