

Barclays Women Championship



Durham vs Blackburn Rover



Sunday 16th February
2025

12:00pm - 2:00pm
Maiden castle

COVER DESIGNED BY
SOFIA LEIGHTLY
ST CUTHBERT'S CATHOLIC PRIMARY

Plastic Furniture Company

Plastic professionals since 1978.

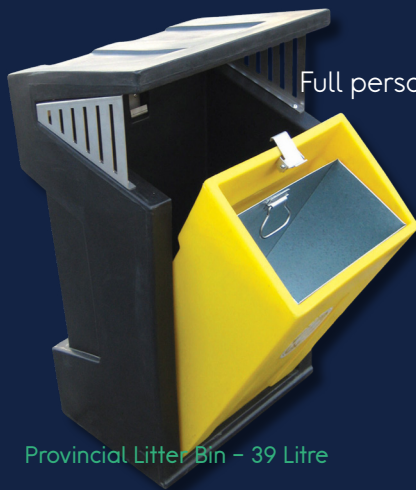


A-Frame Picnic Table and Bench Set

URBAN FURNITURE & BINS

Shipped Worldwide

- Member of Made in Britain
- Maintenance Free
- Manufactured in the UK
- Weather resistant
- Full personalisation service available (design and print)
- Recycled range available



Provincial Litter Bin - 39 Litre



plasticfurniturecompany.co.uk



WELCOME TO MAIDEN CASTLE



WHAT'S INSIDE

- 5 | Captain's Notes with Sarah Wilson
- 7 | Last Time Out - Durham v Sheffield United
- 9 | Off The Pitch with Beth Hepple
- 13 | The Big Interview with Aimee Claypole
- 18 | Meet The Durham Women Squad
- 21 | Supporters Club Update
- 22 | Junior Takeover Day
- 24 | Pull-out Poster
- 27 | Meet Our Visitors - Blackburn Rovers
- 33 | From The Press Box - John Middleton
- 35 | Kids Zone
- 40 | Fixtures & Results
- 45 | Club Pathway News
- 48 | Squad Lists



CLUB STAFF

Director/Head of Football
Lee Sanders

Director/Head of Finance
Dawn Hepple

Operations & Marketing Manager
Mark Donnelly

Safeguarding Lead
Marc McPhillips

First Team Head Coach
Adam Furness

First Team Assistant Coach
George Anthony

Lead Physiotherapist
Natalie Gutteridge

Club Doctor
Dougal Southward

Performance Lead
Simon Fairbairn

Strength & Conditioning Coach
Kara Elderkin

Club Photographer
Craig McNair

Media & Marketing Officer
Jane Trwalter

Content Creators
Laura Smith
Dominic Aberdeen

Club Address
Durham Women FC
Durham University Sport & Wellbeing Park
Maiden Castle
Stockton Road
Durham
DH1 3SE

Email Enquiries
mark.donnelly@durhamwfc.co.uk

X
@DurhamWFC

Facebook
facebook.com/DurhamWomenFC

Instagram
@DurhamWFC

TikTok
@DurhamWFC

YouTube
youtube.com/@durhamwfc

Official Website
durhamwfc.co.uk

MATCH DAY TIMINGS

10:30AM
The gates open and you can enter the ground and pick out your seat or spot to watch the game from!

11:00AM
Team news will be announced via our social media channels - so keep your eyes peeled!

11:15AM
The players will be out to warm-up - so you can watch that while picking up some food from Fat Frank's Street Food Truck or visiting our Merchandise Stall!

12:00PM
Kick-off!

12:45PM
Half-time!

1:45PM
Full-time! Make sure you head to the front of the stand to meet our players for autographs!

TODAY'S OFFICIALS



Referee
Aimee Keir

Assistant Referees
Daniel Sykes
Ogjemwonyi Arakpogun

Fourth Official
Jason Smith

Observer
Andrew Himsworth

MASCOTS

Bishop Auckland
Billingham United
Hetton Juniors
Whiteleas Diamonds
Warwick Wanderers

FROM THE SKIPPER SARAH WILSON



Good afternoon and welcome to today's game with Blackburn.

Last month saw us play two WSL sides in Chelsea and Brighton and that was a fantastic experience and great for the club. Chelsea are one of the best teams in the world at the minute and, reflecting back on the game, it wasn't really a 5-0 game. To go in at half-time 1-0 down was unbelievable and we could take all the positives out of that game into the Brighton one. We had another really good performance, more so in the second half, at Brighton and there were so many positives to build on.

Those games show the standard we want to get to. It was much quicker, technical and that's where we want to be. That experience for us, our young players and the fans, it's amazing.

In our last home game we got a fantastic result against Southampton. It was a fully-deserved win, especially coming off the back of a really tough week. We took all the positives from the previous games into that and it could have been more than 1-0. We were really happy with the clean sheet and three points at home.

Our last game before the break at Sheffield United was a

frustrating one, but we didn't do enough to win the game. The Championship is absolutely brutal and Sheffield is a difficult place to go to. They're a good side and we just didn't do enough on the day - so we're frustrated with ourselves. We reflected on it and have been working hard to put everything right for today's game against Blackburn.

We know Blackburn are an incredibly difficult team to play against. They're a tough opponent and really difficult to break down, so we need to focus on ourselves and make sure we get our bit right.

We've had a couple of really tough weeks in terms of travel so it's nice to be back home. We know how much our fans back us here at Maiden Castle and the support we get, so we're looking forward to seeing that again today.

Thanks for your support - and we hope to see you back here next month when we play Newcastle United.

Sarah Wilson



Wickes

From your first home to your forever home, there is a Wickes kitchen for you.

Kitchens from under
£3,000 to over £20,000

Book a free design
appointment at
our Durham store

LAST TIME OUT



1



1

The points were shared at Bramall Lane as Sheffield United came from behind to draw 1-1 with Durham.

Durham had the better chances in the opening 20 minutes, the best chance falling to Aimee Claypole after Grace Ayre's superb dribbling into the box allowed the forward to take aim but was just shy of the target.

The Blues had a spell of corners which were constantly blocked at the death by the Blades. Michaela Foster's 24th-minute set-piece bent all the way in from the corner and past Sian Rogers to give Durham the lead and beat the corner blocking.

The second half saw more of the same pressure from Durham as Hannah Blake and Mollie Lambert's shots were cleared off the line in the 48th minute, appeals for handball waves away for the latter.

Brave defending from Grace Ayre denied a chance for Esther Morgan in the 58th minute. Former Wildcat Maria Farrugia came close to scoring soon after but could not keep her shot down.

Lambert's first-time strike from range was denied by Rogers at full stretch on the hour mark.

The Blades got one back through Jacqui Hand in the 65th minute, her header looping over Rylee Foster and into the net.

Both sides battled it out for the remainder of the second half but neither could create clear-cut chances to find a winning goal.

if u
care
share

INSIDE OUT

START A
CONVERSATION.
SAVE A LIFE.

#ASKMEWHY



GET INVOLVED

SEPT 10TH

OFF THE PITCH

WITH
BETH HEPPLE



OFF THE PITCH

WITH BETH HEPPLE

THE INTERVIEW WHERE WE TALK ABOUT EVERYTHING - EXCEPT FOOTBALL. WE GET TO KNOW OUR PLAYERS MORE AWAY FROM THE FIELD OF PLAY...



DREAM HOLIDAY DESTINATION...

I'm actually looking into my honeymoon at the minute, so it's probably the Maldives. I've always wanted to go, it looks beautiful.

PRE-MATCH HYPE MUSIC...

We love a bit of old-school dance music in the changing room. Then something random like a bit of ABBA or something like that.



BRIDESMAIDS



ALL-TIME FAVOURITE MOVIE...

The first one that springs to mind is Bridesmaids, just because it's so hilarious and the sarcasm - it's just mint.

MY PETS...

I've got two dogs, Harley and Teddy. They are my babies.





THE THINGS I CAN'T LEAVE THE HOUSE WITHOUT...

Probably my phone. I feel like I can go anywhere without it.

FAVOURITE WAY TO SPEND TIME OFF THE PITCH...

Probably just being with my dogs, with my family, and not thinking about football.



HIDDEN TALENT...

I'm actually the most boring person of all time. I've been asked this before actually, and I've never got an answer. Football is about it!

ALL-TIME FAVOURITE SERIES...

Prison Break- I remember that when it was coming out at the time, it was amazing.



FAVOURITE MEAL...

Oh, I love food. Probably Indian. I love a naughty little Indian meal.

PRISONBREAK



The PFC Trust was set up in 2019 by a small group of like minded individuals who wanted to make a difference. Since then we have awarded over 1.2m in grants / donations to local causes. It is our mission to create positive change in our community.

We work with a range of partners to ensure that individuals and organisations are best placed to reach their goals.

This support is different for everyone we work with, but it can include capacity building support, funding and training opportunities.

**WE BELIEVE WE HAVE
CHANGED LIVES AND
THE LIFE CHANCES
OF MANY
AND NOW YOU CAN HELP
US, CHANGE LIVES TOO.**



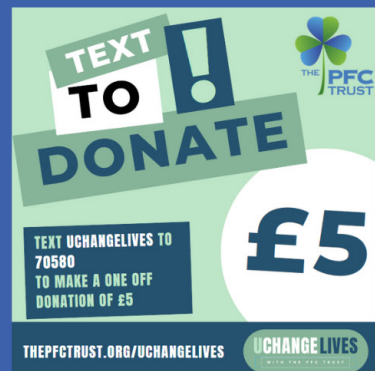
Volunteer



Donate



**Become a
Patron**



For more information about The PFC Trust, Becoming Involved or How we may be able to help you. **Get in Touch!**

 www.thepfctrust.org
 pfc.trust@outlook.com

 /thePFctrust
 /thepfctrust



THE BIG INTERVIEW
AIMEE CLAYPOLE



How are you feeling after your first few weeks at Durham?

“I think it’s been really good. It’s been quite a hectic schedule, so lots of games to get in.

“But it’s nice to kind of get them out of the way and just fit straight into the team, which has been really nice and to get to know the girls on all the long away trips, too.”

Who would you say your best mate in the camp has been so far?

“I think I’m going to have to say Ella Wilson because she’s staring me down right now - haha!

“I knew Ella a little bit before, and also Carly and a few of the other girls as well.”

You’ve witnessed some big matches here so far, what’s been your reaction to the competitiveness of the Championship?

“I love the Championship.

“I had a little bit of time here when I was in Lewes, so I kind of knew what it was about.

“But I think it’s different now that I’ve got a bit more experience behind me and I’ve been to Sweden where it’s a different kind of league, so coming back into the Championship, it’s definitely reminded how competitive it is.”

“You can see that with the results, how close it is, and we know that we can’t really afford to drop points.

“So, yeah, it’s really competitive, which I really like because it means that you’ve got to be on it every game and we always have to compete.”

To lead the line so early can be seen as big pressure; is that something you thrive off?

“Yeah, for sure.

“I’m young, I’ve got a lot of pressure on my shoulders, but it’s something that I enjoy, I like the challenge of that as well.

“I think it pushes me in a different way to know that there’s expectation.

“I haven’t got the first goal yet, but it’s something that I’m working towards, I just have to take it in my stride and just do my best every game.”

You have rapidly won the fans over, how does it feel to have a fanbase like Durham’s behind you?

“I think they’re great.

“We’ve seen over the first few weeks with the long-away trips how they’ve travelled down is unbelievable - the support that they show and the time that they dedicate to us as players, we

really appreciate it.”

Back at home against Blackburn Rovers, how are you feeling going into the game?

“It’s a big one for us, and it’s nice to get a good amount of time to prep for it and look forward to being back at home.

“Since coming here, we haven’t really had time to regroup and some time to train together.”

A lot of big games to go, including back-to-back derbys, how are you looking forward to your first taste of North East clashes?

“I’ve heard a lot about them and I know that there’s a lot of competitiveness between the clubs in the North East, and I’m super excited to be involved.

“The atmosphere is going to be unreal and the games will be intense, so I’m really excited.”



FREE
LOCAL DELIVERY

Your local merchant for

BUILDING, PLUMBING, KITCHENS, BATHROOMS, TIMBER & LANDSCAPING



- ✓ Building materials from leading brands
- ✓ Fast, friendly, reliable and efficient service
- ✓ Home improvement and DIY supplies
- ✓ Local team offering expert trade advice
- ✓ Competitive prices

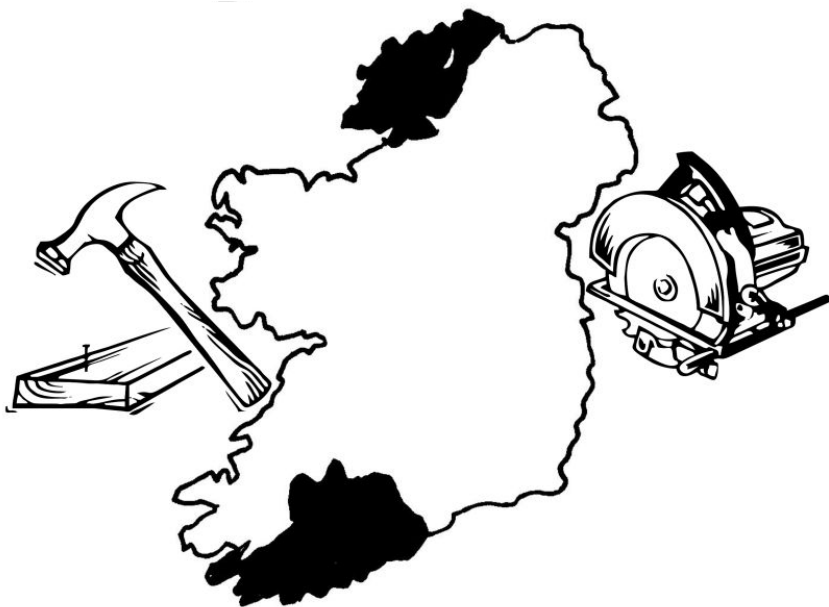
MKM DURHAM

DRAGONVILLE IND EST, DURHAM DH1 2RS

0191 374 2070 | mkmbbs.co.uk  

OPEN Mon-Fri 7:00-5:00 Sat 8:00-noon





DONCORK, INC.



2024/25 PLAYER SPONSORSHIP

- YOUR PLAYER'S MATCH-WORN HOME OR AWAY SHIRT
- TWO SEASON TICKETS FOR THE 2024/25 SEASON
- HALF-PAGE PROGRAMME ADVERT IN EVERY ISSUE
- YOUR LOGO & A LINK TO YOUR WEBSITE ON OUR CLUB SITE
- SOCIAL MEDIA PROMOTION - PLUS MUCH, MUCH MORE!

JUST £500+ VAT FOR THE SEASON!

FOR MORE DETAILS, EMAIL US ON MARK.DONNELLY@DURHAMWFC.CO.UK

MEET THE SQUAD DURHAM WOMEN



23 **Rylee Foster**
Position: Goalkeeper
Nationality: Canadian
Sponsored by: 

Available to sponsor

Autograph

13 **Anna King**
Position: Goalkeeper
Nationality: English
Sponsored by:

Available to sponsor

Autograph

2 **Grace Ayre**
Position: Defender
Nationality: English
Sponsored by:

Available to sponsor

Autograph

3 **Lauren Briggs**
Position: Defender
Nationality: English
Sponsored by:

Available to sponsor

Autograph

4 **Olivia Bramley**
On loan at Portsmouth
Position: Defender
Nationality: English
Sponsored by: 
Alan White

Autograph

5 **Sarah Wilson**
Position: Defender
Nationality: English
Sponsored by: 

Autograph

6 **Sarah Robson**
Position: Midfielder
Nationality: Northern Irish
Sponsored by:
Neil Thornton

Autograph

7 **Beth Hepple**
Position: Midfielder
Nationality: English
Sponsored by:
Darrin's Super Ices

Autograph

8 **Mollie Lambert**
Position: Midfielder
Nationality: English
Sponsored by:
Supporting Independence Outreach

Autograph

9 **Carly Johns**
Position: Forward
Nationality: English
Sponsored by:

Available to sponsor

Autograph



10 Hannah Blake
Position: Forward
Nationality: New Zealander
Sponsored by:
 Available to sponsor
 Autograph



11 Abbi Grant
Position: Forward
Nationality: Scottish
Sponsored by:
 Available to sponsor
 Autograph



15 Aimee Claypole
Position: Forward
Nationality: Scottish
Sponsored by:
 Available to sponsor
 Autograph



12 Lily Crosthwaite
Position: Forward
Nationality: English
Sponsored by: 
 Available to sponsor
 Autograph




14 Becky Salicki
Position: Defender
Nationality: English
Sponsored by: Key Inns
 Available to sponsor
 Autograph



18 Alice Griffiths
Position: Midfielder
Nationality: Welsh
Sponsored by:
 Available to sponsor
 Autograph



16 Dee Bradley
Position: Midfielder
Nationality: Irish/American
Sponsored by: Doncock Inc
 Available to sponsor
 Autograph



17 Kaila Novak
Position: Forward
Nationality: Canadian
Sponsored by:
 Available to sponsor
 Autograph



19 Ella Wilson
Position: Defender
Nationality: English
Sponsored by: 
 Available to sponsor
 Autograph



20 Michaela Foster
Position: Defender
Nationality: New Zealander
Sponsored by:
 Available to sponsor
 Autograph



22 Eleanor Ryan-Doyle
Position: Forward
Nationality: Irish
Sponsored by:
 Available to sponsor
 Autograph



24 Abby Holmes
Position: Defender
Nationality: English
Sponsored by:
 Available to sponsor
 Autograph



**SUPPORTING
INDEPENDENCE**
Outreach Services Ltd



**E J CHILDCARE
SERVICES LTD**



SUPPORTERS CLUB LATEST NEWS FROM THE BLUE ARMY

Welcome from the DWSC!

After two trips to Brighton and a midweek trip to Chelsea we are back at home for a while with a more local away game in between.

We were well represented at Brighton, Chelsea and Sheffield supporting the team who played really well against some real quality teams.

To update those interested in where the money raised by the DWSC actually goes, we have replaced the flags used at home matches to welcome the teams on to the pitch which you will hopefully see today, and we have more flags on their way.

We have also been able to donate an amount of money to a very well deserving cause, that being "St. Cuthberts Hospice".

St Cuthberts Hospice for those who

do not know provide much needed care for those people with cancer, and are in need of financial help at the moment. We are very pleased to have been able to contribute to assist them.

Lastly, as previously mentioned, we have our next social event at Bede Lodge on Saturday April 5th. Tickets are available at £5 and should be a great night with DACODA if previous events are anything to go by.

We hope to see some of you there.

Please see any of us for tickets or email committee@durhamwsc.com.

As always, enjoy the match and sign up to become an Official DWSC member, see us at the match or email us - committee@durhamwsc.com

Junior

Takeover Day

TODAY IS OUR
**JUNIOR
TAKEOVER DAY**

Durham Women and Vision for Education are teaming up to give local pupils a once-in-a-lifetime opportunity - as part of our first-ever Junior Takeover Day!

At the Barclays Women's Championship fixture against Blackburn Rovers on Sunday 16th February, youngsters from across the North East will take on a variety of match day roles.

This is the first time such an initiative has been run at a Barclays Women's Championship fixture and was designed to inspire local students to look at careers in sport that exist beyond the pitch.

Pupils aged 7-13 were invited to apply and we were inundated with impressive applications from all over our region - before a panel of judges from Durham Women and Vision for Education decided on the lucky winners.

They will now take on one of seven roles in and around the match day, which will see pupils doing everything from designing the match day programme front cover to interviewing the head coach after the game.

Our winners and the roles they will be under-taking are:

Club Reporter - Ava Walker (Framwellgate School)

Stadium Announcer - Mercy Adedeji (Deanbank Primary School)

Programme Cover Designer - Sofia Leightly (St Cuthbert's Catholic Primary School, Crook)

Half-Time Entertainment - Olivia Connelly, Emily Hall, Taylor Fisher, Mia Newton (all Northern Saints Academy)

Co-Commentator - Evie Longstaff (Acre Rigg Academy)

Post-Match Interviewer - Holly Easton (Belmont Community School)

Content Creator - Solomia Samuseiva (Stamfordham School)

We were so impressed with all the applications that every entrant has been offered a free ticket to attend the game today!

Keep your eyes peeled this afternoon for all the youngsters completing their roles, and we'll have some of the content they produce on our channels in the days following the game!



Inn Hospitality Group

Local inns with fine hospitality at their core

PUB | ROOMS | FOOD



BOOK A TABLE | BOOK A ROOM



2

GRACE A



AYRE

THE STAKES

HAVE NEVER



BEEN

HIGHER



WHERE GREATNESS LIVES



TODAY'S VISITORS BLACKBURN ROVERS

Find out more about today's opponents...



INTRODUCING

BLACKBURN ROVERS

Formed in 1991, Blackburn Rovers Women have a proud history in the women's game.

After gaining promotion at the end of 2018/19, the Club have played in the Barclays Women's Championship, having previously spent five seasons in the FA Women's Premier League National Division, which was then highest level of women's football in England prior to the formation of the WSL in 2011.

Now under the management of Simon Parker, who was appointed in July 2023.

A run of eight games unbeaten at the end of 2023/24 saw Rovers secure an impressive sixth place finish in the Barclays Women's Championship - breaking the

club record for the highest ever league finish, points won, goals scored and attendance at Ewood Park.

From 22 league matches, Blackburn Rovers Women collected 36 points after winning 11 matches, scoring 25 goals in the process.

In the 2024/25 season, they will call Ewood Park their home in the Barclays Women's Championship, as the Club continues to be the highest-ranked women's side in Lancashire.

This campaign, Rovers are currently ninth in the division as the season heads into its run-in.

4 ONE TO WATCH TYLER TOLAND

The Republic of Ireland international has had spells at Manchester City, Celtic and Levante before arriving in Lancashire. Her playing time in Manchester was cut short by injury, being loaned out to Scottish champions Glasgow City. She moved across the city to Celtic permanently where she won a league and cup double in her first season. Toland made her Irish debut in 2017 against neighbours Northern Ireland, becoming their youngest senior player on record. Starting every game for Blackburn this season, the 23-year-old has been a staple of Rovers' midfield.



THE SQUAD

BLACKBURN ROVERS

GOALKEEPERS

- 1 ALEX BROOKS
- 13 POPPY SOPER

MIDFIELDERS

- 4 TYLER TOLAND
- 8 ELLIE NOBLE
- 10 CHLOE WILLIAMS
- 17 MACY SETTLE
- 22 TIA PRIMMER
- 30 AMELIE WAINE

DEFENDERS

- 2 NIAMH MURPHY
- 3 HANNAH LUKE
- 5 EMMA TAYLOR
- 6 ELLIE HACK
- 12 RACHEL DUGDALE
- 18 GRACE RIGLAR
- 20 EVE CLARKSON
- 31 LUCY JOHNSON
- 43 FAYE COULTHARD
- 55 LUCY NEWELL

FORWARDS

- 7 FARAH CROMPTON
- 9 MARIA EDWARDS
- 19 BETHANY MASON
- 23 GEORGIA WALTERS
- 29 BONNIE DAVIES
- 42 JEMIMA DAHOU

HEAD COACH

Simon Parker

Simon Parker was appointed as Blackburn Rovers Women Head Coach in July 2023. The 38-year-old began his Head Coach journey in the FA Women's National League with Southampton Women's FC back in 2016. Parker departed Southampton Women's FC in January 2019 to join Barclays Women's Championship side Lewes as Assistant Coach. Parker was named Head Coach a year later and led the team to their highest-ever Championship finish during the 2020/21 season. Following a record-breaking season with Lewes, Parker moved to join Portuguese club SC União Torreense in October 2021.





9 ONE TO WATCH

MARIA EDWARDS

England youth international Maria Edwards has led the line for Rovers this season. Scoring eight goals in 14 games this season, the 21-year-old has been the Club's top scorer. Edwards scored a hat-trick earlier in the campaign against Sheffield United, as well as scoring in their last win over Portsmouth. This is her second spell at Ewood Park, spending the 2020-21 season on loan from Manchester United, before joining SGS Essen in the Bundesliga. The forward returned to Blackburn at the beginning of this season.

WE DESIGN | SUPPLY | INSTALL & MAINTAIN...



Controlled Access

AUTOMATED ENTRY SYSTEMS

- AUTOMATIC GATES
- BARRIERS • BOLLARD SYSTEMS
- VOICE & VIDEO INTERCOMS & more

www.controlledaccess.uk



01609 243333



hello@controlledaccess.uk



mhwines.co.uk

MARKET HALL WINES
DURHAM'S FINEST, WINE,
SPIRITS & ALE

WINES, BEERS & SPIRITS IN THE HEART OF DURHAM

FREE LOCAL DELIVERY
ON ORDERS OVER £30
AT WWW.MHWINES.CO.UK

UNITS 4/5, DURHAM INDOOR MARKET,
DURHAM, DH1 3NJ



JOHN MIDDLETON FROM THE PRESS BOX

Greetings for the Back of The Stand!

Special greetings to all those here for the 'Junior Takeover Day', particularly Evie who is joining me in the Commentary "Box" today.

What a great idea and execution by the Club - it will be a great experience for all the youngsters taking part; although I hope I have a couple more years doing this before Evie takes over!

Our team had a busy January, travelling many miles and facing some of the toughest opponents. Experience and team-bonding, plus a weekend off last week will stand us in good stead for the rest of the season.

We also have said goodbye to T and welcomed Rylee, Alice and, earlier, Aimee to Maiden Castle. Rylee has got a song already!

If you remember in the last issue programme, I set you all some Homework - to create a definitive Club song/

chant. We've had a few entries, sent in and heard in the Stand, but I'm giving you an extension to come up with some more.

Today we welcome Blackburn, a team we are very familiar with. Their position in the table doesn't really reflect their season, with a number of postponements.

Rovers have been on a good run of form recently and our two games this season have been close, with our team coming out on top on both occasions.

We have a great game ahead, one that I (and Evie!) will enjoy describing on www.dhradio.org.uk, inside and outside the ground.

Enjoy the game! Let's hear the "Wildcat Roar"!

John

@JADMiddy



VISION for EDUCATION

Kick-start a career in education



Placements available in primary, secondary and SEND schools across the North East

Join our **FREE National Teaching Assistant Programme** and earn while you learn the skills to become a Teaching Assistant



Free online training



Paid in-school placement



Advice, guidance and dedicated support



Potential to secure a long-term or permanent role



PLACES ARE LIMITED

Scan the QR code to find out more and apply

THE SUNDAY TIMES
Best Places to Work 2024
BIG COMPANY

REC Audited Education

Part of **The Edwin Group**



KIDS ZONE

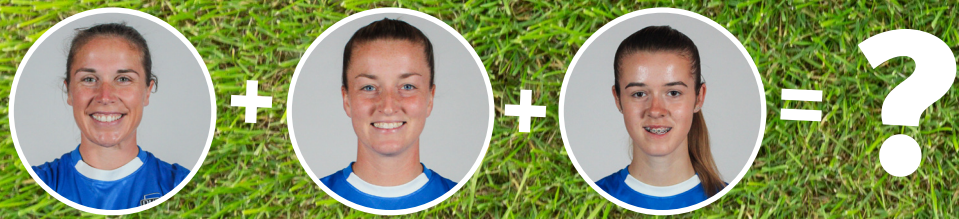
**HEAD INSIDE FOR SOME FUN
ACTIVITIES FOR BEFORE, DURING
AND AFTER THE GAME!**

N I G K M B H W T T D H E P P L E B
 L S R J U R T O I U K A I D R E G O
 G C I N I O X L G L D H Y Z A X L O
 C L F T V B B W G L S W M L Y H V E
 F A F M D S T R L L C O T O R J Z K
 O Y I Q M O L E I Q A B N P E O E V
 S P T M H N F Z X G W D Q W X H Y S
 T O H Q O X J W H B G C W C B N O H
 E L S H W J J R F Q Y S N B C S D P
 R E D N L A M B E R T L V J B H R J
 N X Q U E Z S U P N E I C P K I F Q

**FOSTER
 CLAYPOLE
 GRIFFITHS
 AYRE
 BRIGGS
 WILSON
 ROBSON
 HEPPL
 LAMBERT
 JOHNS**

CAN YOU FIND ALL THE TEAM NAMES?

WORDSEARCH



**ADD UP THE SHIRT NUMBERS OF THESE PLAYERS AND
 CALCULATE THE FINAL NUMBER!**

FOOTBALL MATHS

BADGE QUIZ



CAN YOU NAME THE CLUB FROM
THIS SNIPPET OF THEIR BADGE?

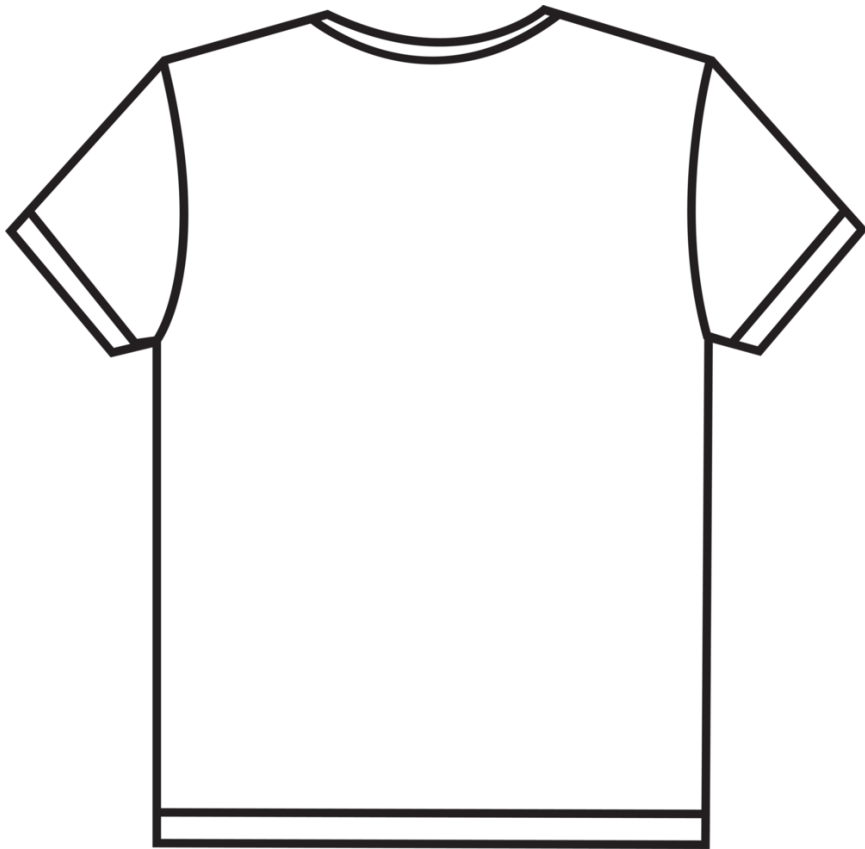
FOOTBALL BINGO

HOW MANY OF THESE CAN YOU SPOT
AT TODAY'S GAME?

 DURHAM SCORE A GOAL	 DURHAM	 SPOT CANDY	 THE REFEREE GIVES A CORNER
 DURHAM	 A PLAYER GETS A YELLOW CARD	 THE REFEREE GIVES A GOAL KICK	 A GOALKEEPER MAKES A SAVE
 THE REFEREE GIVES A FREE KICK	 DURHAM HAVE A SHOT	 DURHAM MAKE A SUBSTITUTION	 DURHAM
 DURHAM	 THE REFEREE GIVES A THROW IN	 A GOALKEEPER CATCHES THE BALL	 OFFSIDE!

DESIGN YOUR OWN SHIRT!

DESIGN YOUR OWN DURHAM WOMEN SHIRT BELOW. SEND IT US ON SOCIAL MEDIA AND YOU COULD WIN TICKETS TO AN UPCOMING HOME GAME!



EITHER TWEET YOUR DESIGN TO @DURHAMWFC OR EMAIL IT TO US ON
MARKDONNELLY@DURHAMWFC.CO.UK

2024 - 2025 FIXTURES & RESULTS

DATE	OPPONENT	H/A	COMP	KO	SCORE
8 SEP	SHEFFIELD UNITED	H	BWC	12PM	W 2-1
14 SEP	PORTSMOUTH	A	BWC	2PM	W 3-0
22 SEP	CHARLTON ATHLETIC	A	BWC	12PM	L 1-2
29 SEP	BIRMINGHAM CITY	H	BWC	12PM	W 1-0
2 OCT	BLACKBURN ROVERS	A	WLC	7PM	W 2-1
6 OCT	NEWCASTLE UNITED	A	BWC	2PM	W 1-0
20 OCT	SUNDERLAND	H	BWC	12PM	L 1-2
3 NOV	BLACKBURN ROVERS	A	BWC	2PM	W 3-2
10 NOV	SOUTHAMPTON	A	BWC	12PM	D 1-1
17 NOV	LONDON CITY LIONESSES	H	BWC	12PM	W 3-2
24 NOV	SHEFFIELD UNITED	H	WLC	12PM	D 1-1*
8 DEC	BIRMINGHAM CITY	A	FAC R3	2PM	W 1-0
11 DEC	SUNDERLAND	A	WLC	7:30PM	W 2-1
15 DEC	BRISTOL CITY	A	BWC	12PM	L 0-5
19 JAN	CHARLTON	H	BWC	12PM	L 1-2
22 JAN	CHELSEA	A	WLC QF	6:45PM	L 0-5
26 JAN	SOUTHAMPTON	H	BWC	12PM	W 1-0
29 JAN	BRIGHTON	A	FAC R4	7PM	L 1-4
2 FEB	SHEFFIELD UNITED	A	BWC	1PM	D 1-1
16 FEB	BLACKBURN ROVERS	H	BWC	12PM	
2 MAR	SUNDERLAND	A	BWC	2PM	
16 MAR	NEWCASTLE UNITED	H	BWC	12PM	
30 MAR	PORTSMOUTH	H	BWC	12PM	
20 APR	BIRMINGHAM CITY	A	BWC	2PM	
27 APR	LONDON CITY	A	BWC	2PM	
4 MAY	BRISTOL CITY	H	BWC	12PM	

* DURHAM WIN ON PENALTIES

LEAGUE TABLE

	TEAM	PLD	PTS	GD
1	BIRMINGHAM CITY	13	26	13
2	LONDON CITY	12	25	10
3	BRISTOL CITY	12	23	11
4	DURHAM	13	23	1
5	CHARLTON ATHLETIC	12	21	7
6	SUNDERLAND	13	21	-3
7	NEWCASTLE UNITED	12	20	5
8	SOUTHAMPTON	13	16	3
9	BLACKBURN ROVERS	10	7	-6
10	SHEFFIELD UNITED	13	6	-13
11	PORTSMOUTH	13	2	-28

PLAYER STATS

PLAYER	START	SUB ON	GOAL	ASSIST	YC	RC
Tatiana SAUNDERS	15	0	0	0	0	0
Grace AYRE	15	3	1	0	5	0
Lauren BRIGGS	12	1	1	1	2	0
Olivia BRAMLEY	3	0	0	0	1	0
Sarah WILSON	19	0	0	1	4	0
Sarah ROBSON	1	5	0	0	2	0
Beth HEPPLE	17	2	3	5	1	0
Mollie LAMBERT	15	2	5	2	1	0
Carly JOHNS	12	6	2	4	3	0
Hannah BLAKE	14	3	3	1	0	0
Abbi GRANT	0	0	0	0	0	0
Lily CROSTHWAITE	16	0	3	1	1	0
Anna KING	2	1	0	0	0	0
Becky SALICKI	15	4	1	0	0	0
Dee BRADLEY	6	3	0	0	2	0
Kaila NOVAK	10	8	2	4	1	0
Ella WILSON	7	5	0	1	0	0
Michaela FOSTER	13	3	2	1	1	0
Eleanor RYAN-DOYLE	5	8	3	1	2	0
Abby HOLMES	8	4	0	0	3	0
Aimee CLAYPOLE	4	0	0	0	0	0
Ryfee FOSTER	2	1	0	0	1	0



CONTINUUM

ADVISORY PARTNERS

PROUD SPONSORS OF
DURHAM WOMEN FC'S
EMERGING TALENT CENTRE

www.continuum.partners



B2B

Injection Moulding Ltd

A professional plastic injection moulding service is offered from modern facilities, using state of the art moulding and ancillary equipment.



I need help coming up with a product idea?

If you have a product idea but don't know how to make it then we can assist in taking concepts through the necessary stages to full production.



I need quite a large order, can you handle that?

No job too small or large - Injection moulding from 1g to 200g and for runs as small as 50 to millions.



I'm on a tighter budget, can I still use your services?

We work closely with several UK and Chinese partner companies in order to improve our services for our customers. Working with these partners means we can offer:

- Fully hardened production tooling
- Low-cost tooling for small-volume production
- Rapid prototype tooling
- Advice on cost-effective tooling design.



Find out more information:
b2binjectionmoulding.co.uk



THANKS TO OUR
**CLUB PATHWAY
SPONSORS**



RICHARD
COULSON
CONSULTANCY

Snowdons

Ken Smith
Roofing Contractor



**JOHN
PARKINSON**

CONTINUUM
ADVISORY PARTNERS

**WANT TO SUPPORT THE NEXT GENERATION OF FEMALE
FOOTBALLERS IN DURHAM?**

**WE HAVE PATHWAY SPONSORSHIP OPPORTUNITIES
AVAILABLE!**

**EMAIL MARK.DONNELLY@DURHAMWFC.CO.UK
FOR MORE DETAILS!**



LATEST NEWS FROM OUR **CLUB** **PATHWAY**

PGA U21 player Grace Collinson has been called up to the England U17 squad for the MIMA Cup! Congratulations, Grace!



Our PGA U21 team were in league action last week, and they beat Charlton 2-0 thanks to goals from Ellen-Marie Atkinson and Grace Forster!

Congratulations to our PGA U16s who won in the Quarter Finals of the JPL Cup! They beat Leicester City on penalties after coming from behind to draw 5-5!





NEXT UP
DURHAM
VERSUS
NEWCASTLE



SCAN HERE
TO REGISTER
FOR TICKET
INFORMATION



SUNDAY 16 MARCH
12PM KICK-OFF
MAIDEN CASTLE

OFFICIAL HYDRATION DRINK & WELLNESS PARTNER

healthy hydration

✓ NATURAL
FLAVOURS
& COLOURS



IMMUNE
BOOSTING
VITAMINS



SWEETNESS
FROM THE
STEVIA LEAF



FAST HYDRATION
WITH ADDED
ELECTROLYTES



Follow & Tag Us!

iPROHYDRATE.COM

[f](#) [t](#) [@](#) [in](#) @iPROHYDRATE

iPRO
HYDRATE



IP45280



DURHAM

2	GRACE AYRE	●●●●
3	LAUREN BRIGGS	●●●●
4	OLIVIA BRAMLEY	●●●●
5	SARAH WILSON	●●●●
6	SARAH ROBSON	●●●●
7	BETH HEPPLER	●●●●
8	MOLLIE LAMBERT	●●●●
9	CARLY JOHNS	●●●●
10	HANNAH BLAKE	●●●●
11	ABBI GRANT	●●●●
12	LILY CROSTHWAITE	●●●●
13	ANNA KING	●●●●
14	BECKY SALICKI	●●●●
15	AIMEE CLAYPOLE	●●●●
16	DEE BRADLEY	●●●●
17	KAILA NOVAK	●●●●
18	ALICE GRIFFITHS	●●●●
19	ELLA WILSON	●●●●
20	MICHAELA FOSTER	●●●●
22	ELEANOR RYAN-DOYLE	●●●●
23	RYLEE FOSTER	●●●●
24	ABBY HOLMES	●●●●

START
SUB ON
GOAL



BLACKBURN

●●●●	ALEX BROOKS 1
●●●●	NIAMH MURPHY 2
●●●●	HANNAH LUKE 3
●●●●	TYLER TOLAND 4
●●●●	EMMA TAYLOR 5
●●●●	ELLIE HACK 6
●●●●	FARAH CROMPTON 7
●●●●	ELLIE NOBLE 8
●●●●	MARIA EDWARDS 9
●●●●	CHLOE WILLIAMS 10
●●●●	RACHEL DUGDALE 12
●●●●	POPPY SOPER 13
●●●●	MACY SETTLE 17
●●●●	GRACE RIGLAR 18
●●●●	BETHANY MASON 19
●●●●	EVE CLARKSON 20
●●●●	TIA PRIMMER 22
●●●●	GEORGIA WALTERS 23
●●●●	BONNIE DAVIES 29
●●●●	AMELIE WAINE 30
●●●●	LUCY JOHNSON 31
●●●●	JEMIMA DAHOU 42
●●●●	FAYE COULTHARD 43
●●●●	LUCY NEWELL 55

START
SUB ON
GOAL

Referee: Aimee Keir
Assistant Referees: Daniel Sykes & Ogiemwonyi Arakpogun
Fourth Official: Jason Smith

Programme Printed By RBH Reeds
Editor & Designer: Mark Donnelly
Contributors: Mark Donnelly, John Middleton, Dom Aberdeen, Blackburn Rovers, Jane Thwaites
All information is correct up until Tuesday February 11th, which is when this programme was sent to print.

