



DURHAM

V CHARLTON ATHLETIC

SUNDAY 19 JANUARY 2024 | OFFICIAL MATCH DAY PROGRAMME | £3



Plastic Furniture Company

Plastic professionals since 1978.

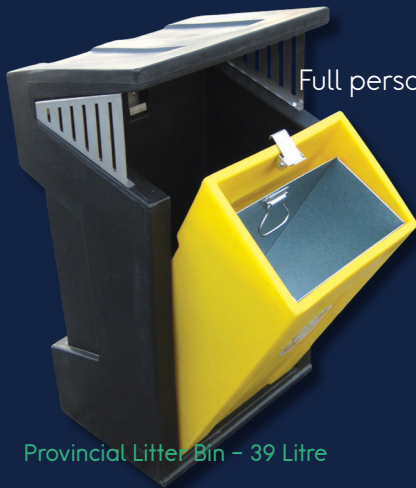


A-Frame Picnic Table and Bench Set

URBAN FURNITURE & BINS

Shipped Worldwide

- Member of Made in Britain
- Maintenance Free
- Manufactured in the UK
- Weather resistant
- Full personalisation service available (design and print)
- Recycled range available



Provincial Litter Bin - 39 Litre



plasticfurniturecompany.co.uk



WELCOME TO MAIDEN CASTLE



WHAT'S INSIDE

- 5 | Captain's Notes with Sarah Wilson
- 7 | Last Time Out - Durham v Sheffield United
- 9 | Off The Pitch with Abby Holmes
- 13 | The Big Interview with Michaela Foster
- 16 | Latest Club News
- 18 | Meet The Durham Women Squad
- 21 | Supporters Club Update
- 22 | Sport in Action Durham
- 24 | Pull-out Poster
- 27 | Meet Our Visitors - Charlton Athletic
- 33 | From The Press Box - John Middleton
- 35 | Kids Zone
- 40 | Fixtures & Results
- 45 | Club Pathway News
- 48 | Squad Lists



CLUB STAFF

Director/Head of Football
Lee Sanders

Director/Head of Finance
Dawn Hepple

Operations & Marketing Manager
Mark Donnelly

Safeguarding Lead
Marc McPhillips

First Team Head Coach
Adam Furness

First Team Assistant Coach
George Anthony

Lead Physiotherapist
Natalie Gutteridge

Club Doctor
Dougal Southward

Performance Lead
Simon Fairbairn

Strength & Conditioning Coach
Kara Elderkin

Club Photographer
Craig McNair

Contact Creators
Laura Smith
Dominic Aberdeen

Club Address
Durham Women FC
Durham University Sport & Wellbeing Park
Maiden Castle
Stockton Road
Durham
DH1 3SE

Email Enquiries
mark.donnelly@durhamwfc.co.uk

X
@DurhamWFC

Facebook
facebook.com/DurhamWomenFC

Instagram
@DurhamWFC

TikTok
@DurhamWFC

YouTube
youtube.com/@durhamwfc

Official Website
durhamwfc.co.uk

MATCH DAY TIMINGS

10:30AM
The gates open and you can enter the ground and pick out your seat or spot to watch the game from!

11:00AM
Team news will be announced via our social media channels - so keep your eyes peeled!

11:15AM
The players will be out to warm-up - so you can watch that while picking up some food from Fat Frank's Street Food Truck or visiting our Merchandise Stall!

12:00PM
Kick-off!

12:45PM
Half-time!

1:45PM
Full-time! Make sure you head to the front of the stand to meet our players for autographs!

TODAY'S OFFICIALS



Referee
Magdalena Golba

Assistant Referees
Alexander Beeley
Fiyinfoluwa Aladelusi

Fourth Official
Dora Jakab

Observer
Russell Tiffin

MASCOTS

Belmont United
Deerness Valley
Shotton Colts

FROM THE SKIPPER SARAH WILSON



Good afternoon and welcome to today's game with Charlton Athletic.

After the Christmas break, everyone has come back refreshed and ready to get into the second half of the season. Everyone is really looking forward to getting back into the games.

It's been a very good first half of the season, and we are really proud of how we have approached it. It's now really important that we continue the work and continue building on that.

We've made some great additions to the squad and they're settling in nicely - along with players returning from injury which is also a massive boost to the squad. It's great to see the hard work they have been doing off the pitch in the rehab programmes to get them back out there.

Today we face Charlton and it's going to be another really difficult test.

We know the challenges that Charlton bring; how much of a strong squad they have. It's essential that we utilise the home advantage and focus on our own game and what we can do.

It's a very busy January coming up with some really important fixtures, along with lots of travel. This is something that we are absolutely used to doing and something we can use to our advantage. Big games bring out the best in us and we know that it's going to be difficult but exciting month.

The fans, as always are going to be so important. We know that regardless of how far we need to go, and whatever the weather they will be right behind us, every step of the way.

Thanks for your support - and we hope to see you back here next Sunday when we play Southampton.

Sarah Wilson



Wickes

From your first home to your forever home, there is a Wickes kitchen for you.

Kitchens from under
£3,000 to over £20,000

Book a free design
appointment at
our Durham store



LAST TIME OUT



1 (4)



1 (3)

Anna King's penalty shootout saves gave Durham the bonus point win over Sheffield United in the penultimate fixture of the Women's League Cup at Maiden Castle.

Eleanor Ryan-Doyle's second-half equaliser took the game to penalties where the Blues prevailed. Becky Salicki scored the decisive penalty after a brace of saves from King.

The fixture started off slow in comparison to the last time the two sides faced off in September. Durham only produced two shots in the first half - the first coming from a Michaela Foster free-kick which was held by Bethan Davies in the Blades goal.

The second half burst into life quick as Sheffield United opened the scoring ten minutes in through Monique Robinson's calm finish.

United's lead lasted only five minutes as Beth Hepple's free-kick was spilled by Davies allowing Ryan-Doyle to throw herself at the ball and bag an equaliser on the hour mark.

Neither side could find a winner in normal time as the game went to penalties.

Eva Butler was first to miss as the Blades forward was denied by King.

Carly Johns was denied by Davies before King restored Durham's advantage by saving Robinson's spot-kick.

Becky Salicki stepped up and smashed the ball past Davies to give Durham the two points.

if u
care
share

INSIDE OUT

START A
CONVERSATION.
SAVE A LIFE.

#ASKMEWHY



GET INVOLVED

SEPT 10TH

OFF THE PITCH

WITH
ABBY HOLMES



OFF THE PITCH

WITH ABBY HOLMES

THE INTERVIEW WHERE WE TALK ABOUT EVERYTHING - EXCEPT FOOTBALL. WE GET TO KNOW OUR PLAYERS MORE AWAY FROM THE FIELD OF PLAY...



DREAM HOLIDAY DESTINATION...
The Maldives - it looks unreal!

PRE-MATCH HYPE MUSIC...

We don't get a choice - Salicki is the DJ!



ALL-TIME FAVOURITE MOVIE...
Wreck it Ralph

MY PETS...

I don't have a pet but my family have a spaniel called Jess!





THE THINGS I CAN'T LEAVE THE HOUSE WITHOUT...
Keys, phone and cash!

FAVOURITE WAY TO SPEND TIME OFF THE PITCH...
Cleaning and lining my shoes up!

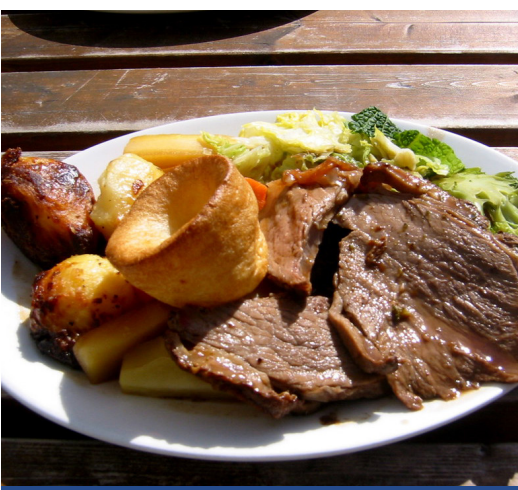


ALL-TIME FAVOURITE SERIES...
Selling Sunset

**SELLING
SUNSET**



HIDDEN TALENT...
Rally driving!



FAVOURITE MEAL...
Sunday Roast!



The PFC Trust was set up in 2019 by a small group of like minded individuals who wanted to make a difference. Since then we have awarded over 1.2m in grants / donations to local causes. It is our mission to create positive change in our community.

We work with a range of partners to ensure that individuals and organisations are best placed to reach their goals.

This support is different for everyone we work with, but it can include capacity building support, funding and training opportunities.

**WE BELIEVE WE HAVE
CHANGED LIVES AND
THE LIFE CHANCES
OF MANY
AND NOW YOU CAN HELP
US, CHANGE LIVES TOO.**



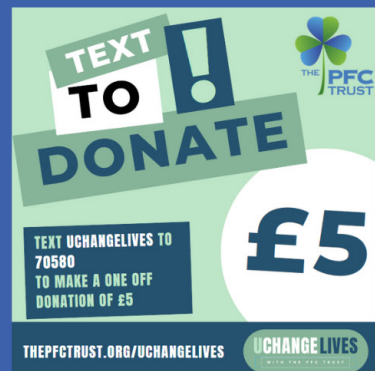
Volunteer



Donate



**Become a
Patron**



For more information about The PFC Trust, Becoming Involved or How we may be able to help you. **Get in Touch!**

www.thepfctrust.org
pfc.trust@outlook.com

[/thePFctrust](https://www.facebook.com/thePFctrust)
[@/thepfctrust](https://www.instagram.com/thepfctrust)



THE BIG INTERVIEW
MICHAELA FOSTER



How have you found settling into the club so far?

“It’s been great. Since day one it’s felt very welcoming - the players and the staff all got behind me pretty quickly.

“It’s starting to feel good, I am enjoying the football, I’m loving Durham, the team and the team mates. They’ve been awesome.”

What has it been like living in the North East? You’re a long way from home!

“It’s a bit colder! I think most people would say that, but it’s a different experience and the people have been lovely and great.

“The people in and surrounding the club have been awesome with me.

“Like I say, it is cold, I’m getting used to that.

“But I enjoyed the snow when that happened!”

You’re not the only Kiwi in the squad with Hannah Blake coming in too - is it nice to have a fellow compatriot around the place?

“Yeah, it’s a little bit of home.

“Me and Hannah have known each other for over ten years now, so I think playing alongside Hannah again has definitely made the transition a little bit easier.

You’ll know by now how important the connection is with the supporters - how does it translate to you as non-local player?

"I think, like I said, the club has made me feel very welcome and the fans have done that just as much.

"They want to get to know you, they're very personable, which I love.

"I'm always happy to have a chat and answer any questions that they have about New Zealand.

"It's helped me to make that connection with them and the club and it's been great to get to know what they're about and what this club means to them."

What was it like making your debut against Birmingham?

"It was special, coming on with just a few minutes left plus the extra time, I was nervous but I enjoyed it, I loved it.

"It was at home, it was a tough game, but it was a really good win

for the club.

"I definitely came on not wanting to let them score, that was my motivation.

"The team, the coaches and all the players backed me which helped me help the team get the result."

You've already been involved in some massive games - what have you made of English football so far?

"It's competitive, especially this league.

"The points are so close, each game can kind of go either way.

"It's a real battle every game. I'm loving it, and it's helping me improve as a player out there on the field too"



FREE
LOCAL DELIVERY

Your local merchant for

BUILDING, PLUMBING, KITCHENS, BATHROOMS, TIMBER & LANDSCAPING



- ✓ Building materials from leading brands
- ✓ Fast, friendly, reliable and efficient service
- ✓ Home improvement and DIY supplies
- ✓ Local team offering expert trade advice
- ✓ Competitive prices

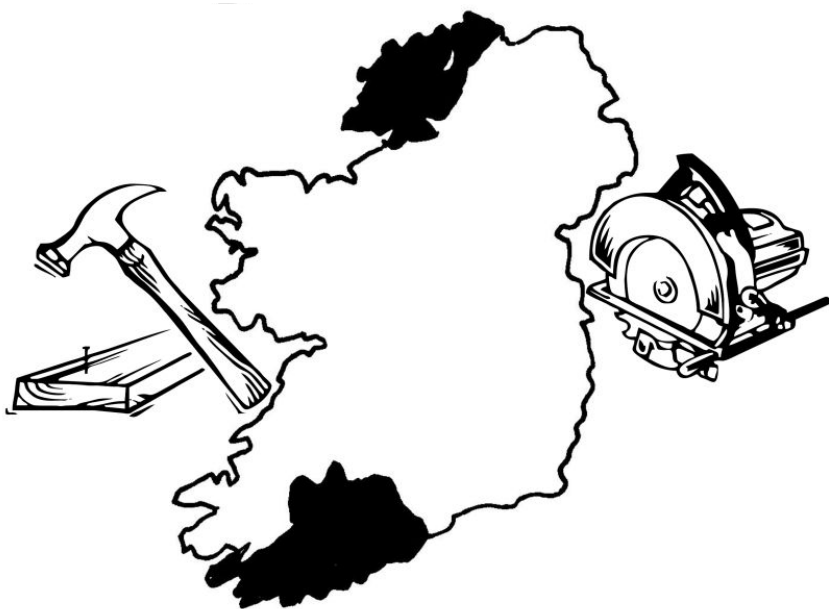
MKM DURHAM

DRAGONVILLE IND EST, DURHAM DH1 2RS

0191 374 2070 | mkmbbs.co.uk  

OPEN Mon-Fri 7:00-5:00 Sat 8:00-noon





DONCORK, INC.



2024/25 PLAYER SPONSORSHIP

- YOUR PLAYER'S MATCH-WORN HOME OR AWAY SHIRT
- TWO SEASON TICKETS FOR THE 2024/25 SEASON
- HALF-PAGE PROGRAMME ADVERT IN EVERY ISSUE
- YOUR LOGO & A LINK TO YOUR WEBSITE ON OUR CLUB SITE
- SOCIAL MEDIA PROMOTION - PLUS MUCH, MUCH MORE!

JUST £500+ VAT FOR THE SEASON!

FOR MORE DETAILS, EMAIL US ON MARK.DONNELLY@DURHAMWFC.CO.UK

MEET THE SQUAD DURHAM WOMEN



1 **Tatiana Saunders**
Position: Goalkeeper
Nationality: English
Sponsored by: 

Available to sponsor

Autograph

13 **Anna King**
Position: Goalkeeper
Nationality: English
Sponsored by: 

Available to sponsor

Autograph

2 **Grace Ayre**
Position: Defender
Nationality: English
Sponsored by: 

Available to sponsor

Autograph

3 **Lauren Briggs**
Position: Defender
Nationality: English
Sponsored by: 

Available to sponsor

Autograph

4 **Olivia Bramley**
Position: Defender
Nationality: English
Sponsored by: 

Alan White

Autograph

5 **Sarah Wilson**
Position: Defender
Nationality: English
Sponsored by:  

Autograph

6 **Sarah Robson**
Position: Midfielder
Nationality: Northern Irish
Sponsored by: 

Neil Thornton

Autograph

7 **Beth Hepple**
Position: Midfielder
Nationality: English
Sponsored by: 

Darrin's Super Ices

Autograph

8 **Mollie Lambert**
Position: Midfielder
Nationality: English
Sponsored by: 

Supporting Independence Outreach

Autograph

9 **Carly Johns**
Position: Forward
Nationality: English
Sponsored by: 

Available to sponsor

Autograph



10 Hannah Blake
Position: Forward
Nationality: New Zealander
Sponsored by:
 Available to sponsor
 Autograph



11 Abbi Grant
Position: Forward
Nationality: Scottish
Sponsored by:
 Available to sponsor
 Autograph



15 Aimee Claypole
Position: Forward
Nationality: Scottish
Sponsored by:
 Available to sponsor
 Autograph




12 Lily Crosthwaite
Position: Forward
Nationality: English
Sponsored by: 
 Available to sponsor
 Autograph



14 Becky Salicki
Position: Defender
Nationality: English
Sponsored by: Key Inns
 Available to sponsor
 Autograph



16 Dee Bradley
Position: Midfielder
Nationality: Irish/American
Sponsored by: Doncock Inc
 Available to sponsor
 Autograph



17 Kaila Novak
Position: Forward
Nationality: Canadian
Sponsored by:
 Available to sponsor
 Autograph



19 Ella Wilson
Position: Defender
Nationality: English
Sponsored by: 
 Available to sponsor
 Autograph



20 Michaela Foster
Position: Defender
Nationality: New Zealander
Sponsored by:
 Available to sponsor
 Autograph



22 Eleanor Ryan-Doyle
Position: Forward
Nationality: Irish
Sponsored by:
 Available to sponsor
 Autograph



24 Abby Holmes
Position: Defender
Nationality: English
Sponsored by:
 Available to sponsor
 Autograph



**SUPPORTING
INDEPENDENCE**
Outreach Services Ltd



**E J CHILDCARE
SERVICES LTD**



SUPPORTERS CLUB LATEST NEWS FROM THE BLUE ARMY

Welcome from the Durham Women FC Supporters Club.

It has been a while since our last home game, a lot has happened in that time...

We've had Christmas, New Year, a new signing and a postponed game, as well as an away trip to Birmingham to remember.

We hope everyone had a good Christmas as well as a great start to 2025.

We would like to welcome our new signing Aimee, we hope you enjoy your time with us and we can't wait to see you in Durham blue.

The postponed game at Brighton - having travelled to Brighton myself for the match it was really disappointing to find that on the day of the match with only hours to kick-off it was called off. There were a number of our fans that had made the long journey, only to have to turn around and go back home.

Anyway, on to a much more positive away fixture at Birmingham.

The supporters club arranged a coach to the game at Birmingham and were given an invitation from the Birmingham Supporters Club to join them for some pre-match food.

The venue was excellent and we were the first people to preview it before the official opening.

We were expecting some nice pre-match snacks but were provided so much more - hot Indian food, mixed grill, spiced fries and a lot more.

As well as the food, friendships were made that will extend well beyond this season.

Enjoy the match today and join us as an Official DWSC member, see us at the match or email us - committee@durhamwsc.com



Today we are proud to be supporting Sport in Action Durham.

Sport In Action's purpose is to improve people's quality of life through sport and recreational activities, seeking to engage, educate and empower young people throughout Zambia.

The initiatives today's fundraising will support include financing Fountain of Hope Orphanage, providing hub sites and schools with sports equipment, delivering Girls in Action sessions, providing access to Duke of Edinburgh or educating participants in small business initiatives.

Last year we funded the construction of a new toilet and shower block at the Fountain of

Hope Orphanage and we can't understate the impact this had during a typhoid outbreak last year.

Team Durham is committed to supporting Sport in Action's work and are thrilled to have Durham Women FC's support today.

Please support the fundraising activities however you can today. As a club, we have already donated a considerable amount of kit to Sport in Action which is already being put to fantastic use in Zambia.

You can find out more about Sport in Action Durham by visiting their Instagram page: [@sportinactiondurham](https://www.instagram.com/sportinactiondurham)



Inn Hospitality Group

Local inns with fine hospitality at their core

PUB | ROOMS | FOOD



BOOK A TABLE | BOOK A ROOM



5

SARAH W



WILSON

THE STAKES

HAVE NEVER



BEEN

HIGHER



WHERE GREATNESS LIVES



TODAY'S VISITORS CHARLTON ATHLETIC

Find out more about today's opponents...

strateg
social Ho

Double Parking Systems
"Drive Park Stack"

0808 169 1788





INTRODUCING

CHARLTON ATHLETIC

Charlton Athletic Women have a rich history in Women's football, being a notable name in the sport for over two decades.

Originally established as Croydon Women, the club became part of Charlton Athletic in 2000.

During this period, the team enjoyed significant success, winning the Women's Premier League Cup and the FA Women's Cup in 2005, as well as reaching multiple finals in domestic competitions.

Despite setbacks, including the disbandment of the women's setup in 2007, the team was re-established by dedicated supporters and quickly regained its footing.

Charlton returned to prominence,

climbing through the divisions and earning a place in the Women's Championship in 2018, where they have since become a competitive force since and are now battling to secure a place in the WSL after missing out by one point last season.

This season, Karen Hills' side were among the early pace-setters and moved top of the league in the early weeks.

They currently sit eighth in the table - albeit just five points off the summit - and ended 2024 with a well-earned point away at league leaders Birmingham City.

The Addicks were in Adobe Women's FA Cup action last weekend, where they fell to a 4-0 defeat against top flight side Chelsea.



XXXXX

15 ONE TO WATCH

KAYLEIGH BARTON

THE SQUAD

CHARLTON ATHLETIC

GOALKEEPERS

- 1 JESSICA GRAY
- 19 SOPHIE WHITEHOUSE

MIDFIELDERS

- 4 MIA ROSS
- 7 KATIE BRADLEY
- 8 CARLA HUMPHREY
- 10 MELISSA FILIS
- 12 JODIE HUTTON
- 20 MARY BASHFORD
- 35 ATLANTA PRIMUS

DEFENDERS

- 3 CHARLOTTE NEWSHAM
- 5 ELISHA N'DOW
- 6 GRACIE PEARSE
- 17 KIERA SKEELS
- 21 SOPHIE O'ROURKE
- 22 BETH ROE
- 25 GRETA HUMPHREYS

FORWARDS

- 11 ELLIE BRAZIL
- 15 KAYLEIGH BARTON
- 16 KARIN MUYA
- 18 GLORIA SIBER

HEAD COACH

Karen Hills

Karen Hills narrowly missed leading Charlton to the Women's Championship title last season, finishing second behind Crystal Palace by a single point. Now entering her fourth season in charge, she aims to take the Addicks to the Women's Super League.

A respected coach, Hills previously transformed Tottenham Hotspur into a WSL club during an 11-year stint and was voted the first member of Charlton's Women's Hall of Fame for her playing contributions, including over 150 appearances, four FA Cup finals, and a 2005 FA Cup triumph.





XXXXX

17

ONE TO WATCH

KIERA SKEELS

WE DESIGN | SUPPLY | INSTALL & MAINTAIN...



Controlled Access

AUTOMATED ENTRY SYSTEMS

- AUTOMATIC GATES
- BARRIERS • BOLLARD SYSTEMS
- VOICE & VIDEO INTERCOMS & more

www.controlledaccess.uk



01609 243333



hello@controlledaccess.uk



mhwines.co.uk

MARKET HALL WINES
DURHAM'S FINEST, WINE,
SPIRITS & ALE

WINES, BEERS & SPIRITS IN THE HEART OF DURHAM

FREE LOCAL DELIVERY
ON ORDERS OVER £30
AT WWW.MHWINES.CO.UK

UNITS 4/5, DURHAM INDOOR MARKET,
DURHAM, DH1 3NJ



JOHN MIDDLETON FROM THE PRESS BOX

Happy New Year from the Back of the Stand!

What a season so far! Who'd have thought we'd still be in contention in the League and both Cups?!

I, of course, realise that our next two Cup ties are tough ones but we can enjoy this feeling just a little longer. Anything could happen; it is not impossible to be in a similar situation this time next month!

It was disappointing for all concerned that last Saturday's game was postponed but it may help progression in the end with Brighton flying high in the WSL and being distracted a bit more - we'll see!

What we can say is that we deserve where we are right now and have an exciting time ahead! Starting today against Charlton, a team which we always have a great battle with, Home and Away.

Before I sign-off, I must pay tribute to The Blue Army; especially mentioning those

who made the long trip down last weekend, at their own expense, only to be disappointed. It is that love and devotion for the Club, replicated here at Maiden Castle, which makes a huge difference to everyone's Football experience.

The number of flags continue to grow, the chants, drums and "woos" and, in turn, the support felt by the players gives them the extra boost.

We, at DHR, look forward to bringing commentary to those inside and outside the ground for the remainder of the season (and beyond) via www.dhradio.org.uk and thank you for your comments. I hope you can have a listen to "The Durham Roarcast" podcast too!

Enjoy the game and let's hear the "Wildcat Roar"!

John

@JADMiddy



VISION for EDUCATION

Kick-start a career in education



Placements
available in primary,
secondary and
SEND schools
across the
North East

Join our **FREE** National Teaching Assistant Programme and earn while you learn the skills to become a Teaching Assistant



Free online training



Paid in-school placement



Advice, guidance and dedicated support



Potential to secure a long-term or permanent role



PLACES ARE LIMITED

Scan the QR code to find out more and apply

THE SUNDAY TIMES
Best Places to Work 2024
BIG COMPANY

 **REC** Audited Education

Part of  The Edwin Group



KIDS ZONE

**HEAD INSIDE FOR SOME FUN
ACTIVITIES FOR BEFORE, DURING
AND AFTER THE GAME!**

E E S A H U S U N D E R L A N D Z P
 J B B I R M I N G H A M N U B U Y O
 T J A F S D S O W X W V E F L V D R
 S O U T H A M P T O N G W G A G U T
 X X H G B V A R G F R D C U C J R S
 U P T S R J E M C Q L Q A O K V H M
 F X I X R R N W H B U V S G B Z A O
 R W X H S T J E O X I X T Y U T M U
 A D L O N D O N C I T Y L E R L T T
 B R I S T O L F K Z H O E N N N Y H
 F D J X T D K W S H E F F I E L D Q

BIRMINGHAM
SOUTHAMPTON
LONDON CITY
BLACKBURN
BRISTOL
DURHAM
SUNDERLAND
NEWCASTLE
SHEFFIELD
PORTSMOUTH
CHARLTON

CAN YOU FIND ALL THE TEAM NAMES?

WORDSEARCH



ADD UP THE SHIRT NUMBERS OF THESE PLAYERS AND CALCULATE THE FINAL NUMBER!

FOOTBALL MATHS

BADGE QUIZ



CAN YOU NAME THE CLUB FROM
THIS SNIPPET OF THEIR BADGE?

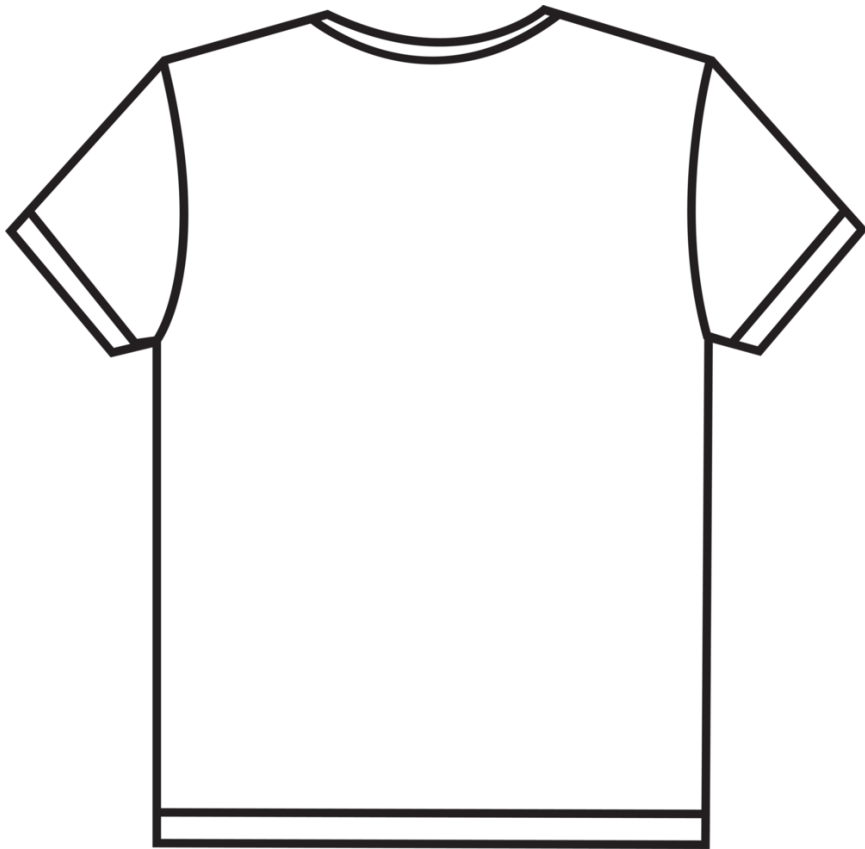
FOOTBALL BINGO

HOW MANY OF THESE CAN YOU SPOT
AT TODAY'S GAME?

 DURHAM SCORE A GOAL	 DURHAM	 SPOT CANDY	 THE REFEREE GIVES A CORNER
 DURHAM	 A PLAYER GETS A YELLOW CARD	 THE REFEREE GIVES A GOAL KICK	 A GOALKEEPER MAKES A SAVE
 THE REFEREE GIVES A FREE KICK	 DURHAM HAVE A SHOT	 DURHAM MAKE A SUBSTITUTION	 DURHAM
 DURHAM	 THE REFEREE GIVES A THROW IN	 A GOALKEEPER CATCHES THE BALL	 OFFSIDE!

DESIGN YOUR OWN SHIRT!

DESIGN YOUR OWN DURHAM WOMEN SHIRT BELOW. SEND IT US ON SOCIAL MEDIA AND YOU COULD WIN TICKETS TO AN UPCOMING HOME GAME!



EITHER TWEET YOUR DESIGN TO @DURHAMWFC OR EMAIL IT TO US ON
MARKDONNELLY@DURHAMWFC.CO.UK

2024 - 2025 FIXTURES & RESULTS

DATE	OPPONENT	H/A	COMP	KO	SCORE
8 SEP	SHEFFIELD UNITED	H	BWC	12PM	W 2-1
14 SEP	PORTSMOUTH	A	BWC	2PM	W 3-0
22 SEP	CHARLTON ATHLETIC	A	BWC	12PM	L 1-2
29 SEP	BIRMINGHAM CITY	H	BWC	12PM	W 1-0
2 OCT	BLACKBURN ROVERS	A	WLC	7PM	W 2-1
6 OCT	NEWCASTLE UNITED	A	BWC	2PM	W 1-0
20 OCT	SUNDERLAND	H	BWC	12PM	L 1-2
3 NOV	BLACKBURN ROVERS	A	BWC	2PM	W 3-2
10 NOV	SOUTHAMPTON	A	BWC	12PM	D 1-1
17 NOV	LONDON CITY LIONESSES	H	BWC	12PM	W 3-2
24 NOV	SHEFFIELD UNITED	H	WLC	12PM	D 1-1*
8 DEC	BIRMINGHAM CITY	A	FAC R3	2PM	W 1-0
11 DEC	SUNDERLAND	A	WLC	7:30PM	W 2-1
15 DEC	BRISTOL CITY	A	BWC	12PM	L 0-5
19 JAN	CHARLTON	H	BWC	12PM	
22 JAN	CHELSEA	A	WLC QF	6:45PM	
26 JAN	SOUTHAMPTON	H	BWC	12PM	
29 JAN	BRIGHTON	A	FAC R4	7PM	
2 FEB	SHEFFIELD UNITED	A	BWC	12:30PM	
16 FEB	BLACKBURN ROVERS	H	BWC	12PM	
2 MAR	SUNDERLAND	A	BWC	2PM	
16 MAR	NEWCASTLE UNITED	H	BWC	12PM	
30 MAR	PORTSMOUTH	H	BWC	12PM	
20 APR	BIRMINGHAM CITY	A	BWC	2PM	
27 APR	LONDON CITY	A	BWC	2PM	
4 MAY	BRISTOL CITY	H	BWC	12PM	

* DURHAM WIN ON PENALTIES

LEAGUE TABLE

	TEAM	PLD	PTS	GD
1	BIRMINGHAM CITY	10	20	12
2	BRISTOL CITY	10	20	10
3	LONDON CITY LIONESSES	10	19	8
4	DURHAM	10	19	1
5	SUNDERLAND	10	17	-4
6	SOUTHAMPTON	10	15	6
7	NEWCASTLE UNITED	9	15	4
8	CHARLTON ATHLETIC	10	15	3
9	BLACKBURN ROVERS	9	6	-6
10	SHEFFIELD UNITED	10	4	-10
11	PORTSMOUTH	10	2	-24

PLAYER STATS

PLAYER	START	SUB ON	GOAL	ASSIST	YC	RC
Tatiana SAUNDERS	12	0	0	0	0	0
Grace AYRE	10	3	1	0	3	0
Lauren BRIGGS	12	1	1	1	2	0
Olivia BRAMLEY	3	0	0	0	1	0
Sarah WILSON	14	0	0	1	4	0
Sarah ROBSON	1	5	0	0	2	0
Beth HEPPLE	13	1	3	4	0	0
Mollie LAMBERT	11	1	4	2	1	0
Carly JOHNS	10	3	2	4	3	0
Hannah BLAKE	11	1	2	1	0	0
Abbi GRANT	0	0	0	0	0	0
Lily CROSTHWAITE	11	0	3	1	0	0
Anna KING	2	0	0	0	0	0
Becky SALICKI	11	3	0	0	0	0
Dee BRADLEY	5	3	0	0	2	0
Kaila NOVAK	9	5	2	3	1	0
Ella WILSON	4	3	0	1	0	0
Michaela FOSTER	8	3	1	1	0	0
Eleanor RYAN-DOYLE	4	5	3	1	2	0
Abby HOLMES	5	3	0	0	3	0



CONTINUUM

ADVISORY PARTNERS

PROUD SPONSORS OF
DURHAM WOMEN FC'S
EMERGING TALENT CENTRE

www.continuum.partners



B2B

Injection Moulding Ltd

A professional plastic injection moulding service is offered from modern facilities, using state of the art moulding and ancillary equipment.



I need help coming up with a product idea?

If you have a product idea but don't know how to make it then we can assist in taking concepts through the necessary stages to full production.



I need quite a large order, can you handle that?

No job too small or large - Injection moulding from 1g to 200g and for runs as small as 50 to millions.



I'm on a tighter budget, can I still use your services?

We work closely with several UK and Chinese partner companies in order to improve our services for our customers. Working with these partners means we can offer:

- Fully hardened production tooling
- Low-cost tooling for small-volume production
- Rapid prototype tooling
- Advice on cost-effective tooling design.



Find out more information:
b2binjectionmoulding.co.uk



THANKS TO OUR
**CLUB PATHWAY
SPONSORS**



RICHARD
COULSON
CONSULTANCY

Snowdons

Ken Smith
Roofing Contractor



**JOHN
PARKINSON**

CONTINUUM

ADVISORY PARTNERS

**WANT TO SUPPORT THE NEXT GENERATION OF FEMALE
FOOTBALLERS IN DURHAM?**

**WE HAVE PATHWAY SPONSORSHIP OPPORTUNITIES
AVAILABLE!**

**EMAIL MARK.DONNELLY@DURHAMWFC.CO.UK
FOR MORE DETAILS!**



LATEST NEWS FROM OUR CLUB PATHWAY

Macy Bangura recently featured for England U15s in the UEFA Development Tournament.

Macy scored twice in a 5-1 win over Norway. The Young Lionesses then had a 2-0 win over Switzerland where Macy was given the opportunity to captain the team, before the side finished off the tournament with a win over Iceland.

Congratulations, Macy!



Our U9, U10 and U12 ETC players enjoyed a futsal festival against Sunderland before the Christmas break. It was great for the girls to play a different format with lots of touches on the ball.

Look out for some of our Pathway Players who will be our Ball Girls today!

Pathway Players can sign-up to be Ball Girls on Heja ahead of each home game.

Our PGA U21s are into the Semi Final of the PGA Plate after a 2-1 win against Tottenham - in a dramatic tie that went to extra time!



NEXT UP
DURHAM
VERSUS
SOUTHAMPTON



SCAN HERE
FOR TICKETS!



SUNDAY 26 JANUARY
12PM KICK-OFF
MAIDEN CASTLE

OFFICIAL HYDRATION DRINK & WELLNESS PARTNER

healthy hydration

✓ NATURAL
FLAVOURS
& COLOURS



IMMUNE
BOOSTING
VITAMINS



SWEETNESS
FROM THE
STEVIA LEAF



FAST HYDRATION
WITH ADDED
ELECTROLYTES



Follow & Tag Us!

iPROHYDRATE.COM @iPROHYDRATE

IP45280





DURHAM

CHARLTON

1	TATIANA SAUNDERS	●●●●
2	GRACE AYRE	●●●●
3	LAUREN BRIGGS	●●●●
4	OLIVIA BRAMLEY	●●●●
5	SARAH WILSON	●●●●
6	SARAH ROBSON	●●●●
7	BETH HEPPLER	●●●●
8	MOLLIE LAMBERT	●●●●
9	CARLY JOHNS	●●●●
10	HANNAH BLAKE	●●●●
11	ABBI GRANT	●●●●
12	LILY CROSTHWAITE	●●●●
13	ANNA KING	●●●●
14	BECKY SALICKI	●●●●
15	AIMEE CLAYPOLE	●●●●
16	DEE BRADLEY	●●●●
17	KAILA NOVAK	●●●●
19	ELLA WILSON	●●●●
20	MICHAELA FOSTER	●●●●
22	ELEANOR RYAN-DOYLE	●●●●
24	ABBY HOLMES	●●●●

JESSICA GRAY	1
CHARLOTTE NEWSHAM	3
MIA ROSS	4
ELISHA N'DOW	5
GRACIE PEARSE	6
KATIE BRADLEY	7
CARLA HUMPHREY	8
MELISSA FILIS	10
ELLIE BRAZIL	11
JODIE HUTTON	12
KAYLEIGH BARTON	15
KARIN MUYA	16
KIERA SKEELS	17
GLORIA SIBER	18
SOPHIE WHITEHOUSE	19
MARY BASHFORD	20
SOPHIE O'ROURKE	21
BETH ROE	22
GRETA HUMPHREYS	25
ATLANTA PRIMUS	35

START
SUB ON
GOAL

START
SUB ON
GOAL

Referee: Magdalena Golba
Assistant Referees: Alexander Beeley & Fiyinfoluwa Aladelusi
Fourth Official: Dora Jakab

Programme Printed By RBH Reeds
Editor & Designer: Mark Donnelly
Contributors: Mark Donnelly, John Middleton, Dom Aberdeen, Charlton Athletic, Jane Thwaites
All information is correct up until Tuesday January 14th, which is when this programme was sent to print.

